

TIMELESS RABBIT MAB

Cat.#: N262996

Product Name: Anti-TIMELESS Rabbit Monoclonal Antibody

Synonyms: hTIM; TIM; TIM1; Timeless; timeless circadian clock 1; TIMELESS1

UNIPROT ID: Q9UNSI

Background: Required for normal progression of S-phase. Involved in the circadian rhythm autoregulatory loop. Negatively regulates CLOCK-NPAS2/BMAL1-induced transactivation of PER1 possibly via translocation of PER1 into the nucleus.

Immunogen: A synthetic peptide of human Timeless

Applications: WB,IHC-F,IHC-P,ICC/IF

Recommended Dilutions: WB: 1/500-1/1000 IHC: 1/50-1/100 IF: 1/50-1/200

Host Species: Rabbit

Clonality: Rabbit Monoclonal

Clone ID: R01-7H7

MW: Calculated MW: 139 kDa; Observed MW: 150 kDa

Isotype: IgG

Purification: Affinity Purified

Species Reactivity: Human

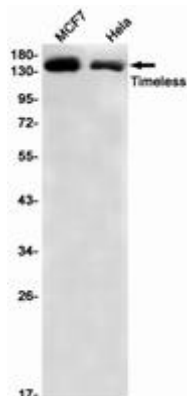
Conjugation: Unconjugated

Modification: Unmodified

Constituents: PBS (without Mg²⁺ and Ca²⁺), pH 7.3 containing 50% glycerol, 0.5% BSA and 0.02% sodium azide

Research Areas: Epigenetics and Nuclear Signaling

Storage & Shipping: Store at -20°C. Avoid repeated freezing and thawing



Western blot analysis of Timeless in MCF-7, HeLa lysates using TIMELESS antibody.



Product Description

Pioneering GTPase and Oncogene Product Development since 2010
