

## TIMM44 RABBIT MAB

**Cat.#:** N262997

**Product Name:** Anti-TIMM44 Rabbit Monoclonal Antibody

**Synonyms:** TIM44

**UNIPROT ID:** O43615

**Background:** Essential component of the PAM complex, a complex required for the translocation of transit peptide-containing proteins from the inner membrane into the mitochondrial matrix in an ATP-dependent manner. Recruits mitochondrial HSP70 to drive protein translocation into the matrix using ATP as an energy source.

**Immunogen:** Recombinant protein of human TIMM44

**Applications:** WB, ICC/IF, IP

**Recommended Dilutions:** WB: 1/500-1/1000 IF: 1/50-1/200 IP: 1/20

**Host Species:** Rabbit

**Clonality:** Rabbit Monoclonal

**Clone ID:** R04-7H8

**MW:** Calculated MW: 51 kDa; Observed MW: 45 kDa

**Isotype:** IgG

**Purification:** Affinity Purified

**Species Reactivity:** Human

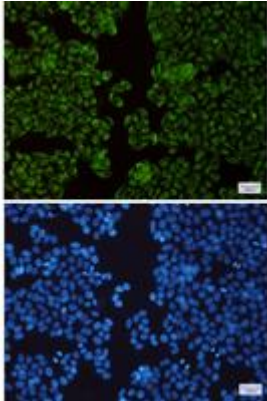
**Conjugation:** Unconjugated

**Modification:** Unmodified

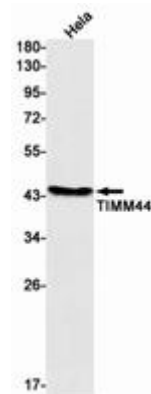
**Constituents:** PBS (without Mg<sup>2+</sup> and Ca<sup>2+</sup>), pH 7.3 containing 50% glycerol, 0.5% BSA and 0.02% sodium azide

**Research Areas:** Endocrine & Metabolism

**Storage & Shipping:** Store at -20°C. Avoid repeated freezing and thawing



Immunocytochemistry analysis of TIMM44(green) in Hela using TIMM44 antibody, and DAPI(blue)



Western blot analysis of TIMM44 in Hela lysates using TIMM44 antibody.