

TIMP1 RABBIT PAB

Cat.#: S210637

Product Name: Anti-TIMP1 Rabbit Polyclonal Antibody

Synonyms: EPA; EPO; HCI; CLGI; TIMP

UNIPROT ID: P01033 (Gene Accession - BC000866)

Background: This gene belongs to the TIMP gene family. The proteins encoded by this gene family are natural inhibitors of the matrix metalloproteinases (MMPs), a group of peptidases involved in degradation of the extracellular matrix. In addition to its inhibitory role against most of the known MMPs, the encoded protein is able to promote cell proliferation in a wide range of cell types, and may also have an anti-apoptotic function. Transcription of this gene is highly inducible in response to many cytokines and hormones. In addition, the expression from some but not all inactive X chromosomes suggests that this gene inactivation is polymorphic in human females. This gene is located within intron 6 of the synapsin I gene and is transcribed in the opposite direction.

Immunogen: Fusion protein of human TIMP1

Applications: ELISA, IHC

Recommended Dilutions: IHC: 15-50; ELISA: 1000-2000

Host Species: Rabbit

Clonality: Rabbit Polyclonal

Isotype: Immunogen-specific rabbit IgG

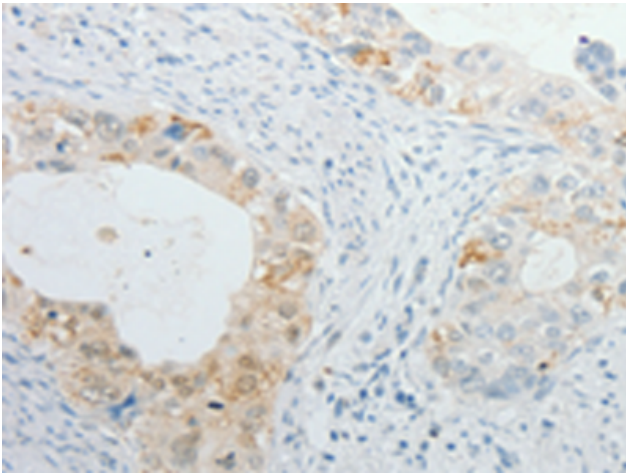
Purification: Antigen affinity purification

Species Reactivity: Human

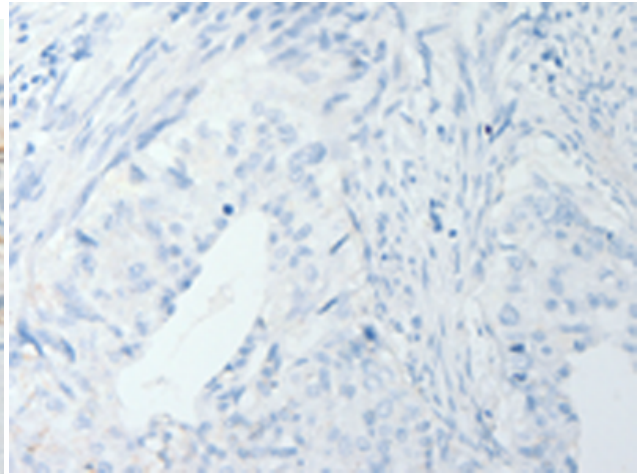
Constituents: PBS (without Mg²⁺ and Ca²⁺), pH 7.4, 150 mM NaCl, 0.05% Sodium Azide and 40% glycerol

Research Areas: Signal Transduction, Cardiovascular, Cell Biology

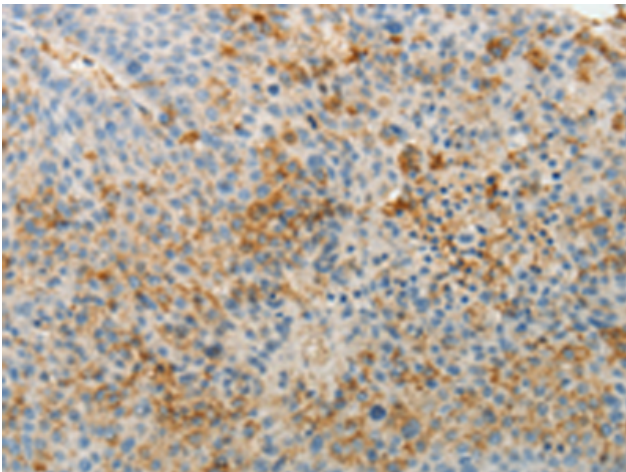
Storage & Shipping: Store at -20°C. Avoid repeated freezing and thawing



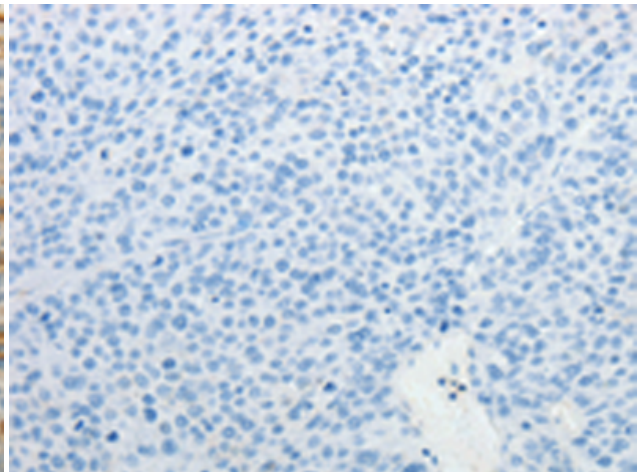
Immunohistochemistry analysis of paraffin-embedded Human cervical cancer tissue using 210637 (TIMP1 Antibody) at a dilution of 1/15 (Cytoplasm).



In comparison with the IHC on the left, the same paraffin-embedded Human cervical cancer tissue is first treated with the fusion protein and then with 210637 (Anti-TIMP1 Antibody) at dilution 1/15.



The image on the left is immunohistochemistry of paraffin-embedded Human liver cancer tissue using 210637 (Anti-TIMP1 Antibody) at a dilution of 1/15.



In comparison with the IHC on the left, the same paraffin-embedded Human liver cancer tissue is first treated with fusion protein and then with D121341 (Anti-TIMP1 Antibody) at dilution 1/15.