

TIMP3 RABBIT PAB

Cat.#: S216838

Product Name: Anti-TIMP3 Rabbit Polyclonal Antibody

Synonyms: SFD; K222; K222TA2; HSMRK222

UNIPROT ID: P35625 (Gene Accession - BC014277)

Background: This gene belongs to the TIMP gene family. The proteins encoded by this gene family are inhibitors of the matrix metalloproteinases, a group of peptidases involved in degradation of the extracellular matrix (ECM). Expression of this gene is induced in response to mitogenic stimulation and this netrin domain-containing protein is localized to the ECM. Mutations in this gene have been associated with the autosomal dominant disorder Sorsby's fundus dystrophy.

Immunogen: Fusion protein of human TIMP3

Applications: ELISA, WB, IHC

Recommended Dilutions: IHC: 15-50;WB: 200-1000;ELISA: 1000-2000

Host Species: Rabbit

Clonality: Rabbit Polyclonal

Isotype: Immunogen-specific rabbit IgG

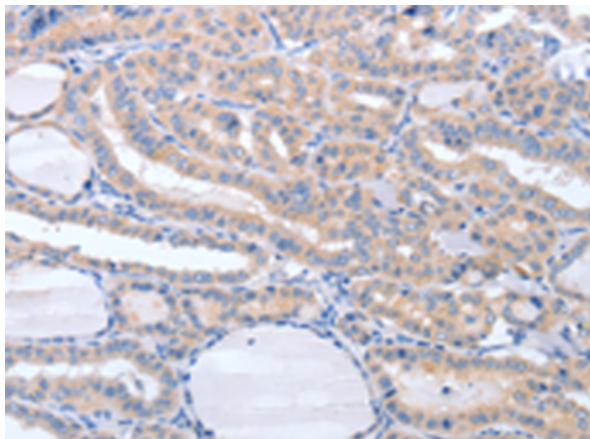
Purification: Antigen affinity purification

Species Reactivity: Human, Mouse, Rat

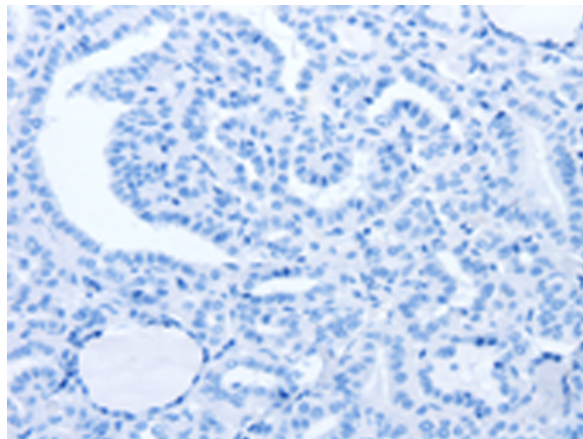
Constituents: PBS (without Mg²⁺ and Ca²⁺), pH 7.4, 150 mM NaCl, 0.05% Sodium Azide and 40% glycerol

Research Areas: Signal Transduction, Cardiovascular, Cancer, Cell Biology, Neuroscience

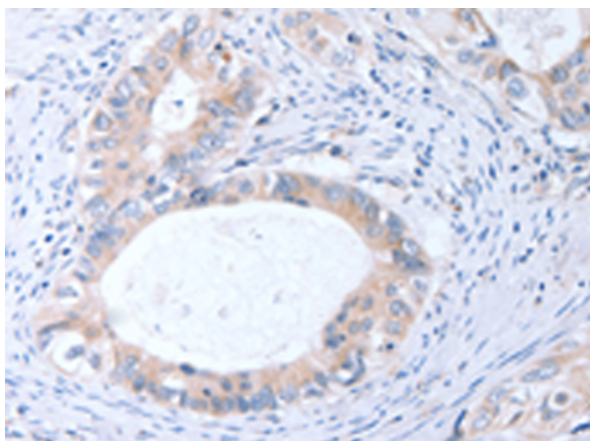
Storage & Shipping: Store at -20°C. Avoid repeated freezing and thawing



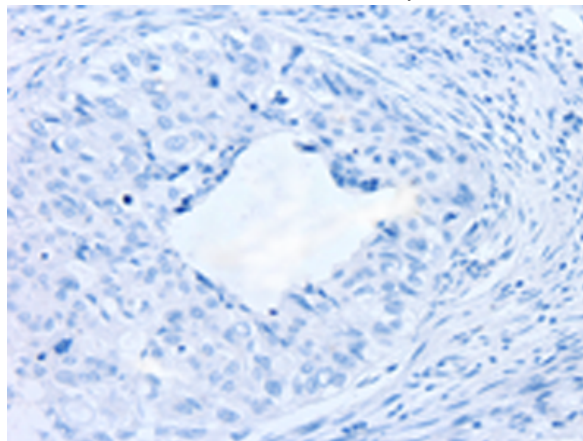
Immunohistochemistry analysis of paraffin embedded Human thyroid cancer tissue using 216838(TIMP3 Antibody) at a dilution of 1/20(Cytoplasm).



In comparison with the IHC on the left, the same paraffin-embedded Human thyroid cancer tissue is first treated with the fusion protein and then with 216838(Anti-TIMP3 Antibody) at dilution 1/20.



The image on the left is immunohistochemistry of paraffin-embedded Human cervical cancer tissue using 216838(Anti-TIMP3 Antibody) at a dilution of 1/20.



In comparison with the IHC on the left, the same paraffin-embedded Human cervical cancer tissue is first treated with fusion protein and then with D221339(Anti-TIMP3 Antibody) at dilution 1/20.



Gel: 12%SDS-PAGE, Lysate: 40 µg;
Lane: Huvec cells;
Primary antibody: 216838(TIMP3 Antibody) at dilution 1/250;
Secondary antibody: Goat anti rabbit IgG at 1/8000 dilution;
Exposure time: 10 seconds



Product Description

Pioneering GTPase and Oncogene Product Development since 2010
