

TIPRL RABBIT PAB

Cat.#: S218817

Product Name: Anti-TIPRL Rabbit Polyclonal Antibody

Synonyms: TIP; TIP41; TIPRL1

UNIPROT ID: O75663 (Gene Accession - BC009506)

Background: TIPRL is an inhibitory regulator of protein phosphatase-2A (PP2A) (see PPP2CA; MIM 176915), PP4 (see PPP4C; MIM 602035), and PP6 (see PPP6C; MIM 612725) (McConnell et al., 2007 [PubMed 17384681]).

Immunogen: Fusion protein of human TIPRL

Applications: ELISA, IHC

Recommended Dilutions: IHC: 50-300; ELISA: 5000-10000

Host Species: Rabbit

Clonality: Rabbit Polyclonal

Isotype: Immunogen-specific rabbit IgG

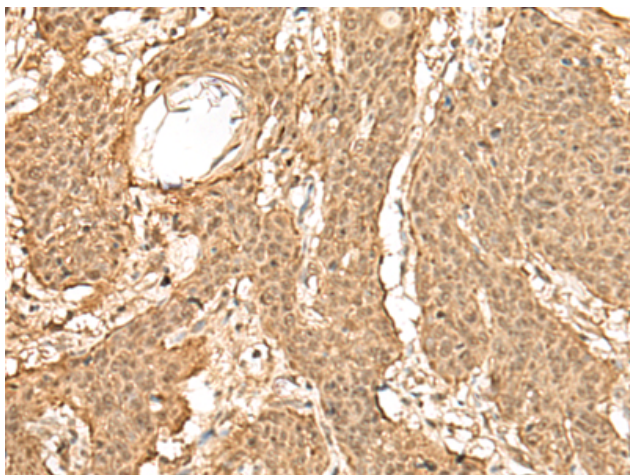
Purification: Antigen affinity purification

Species Reactivity: Human, Mouse, Rat

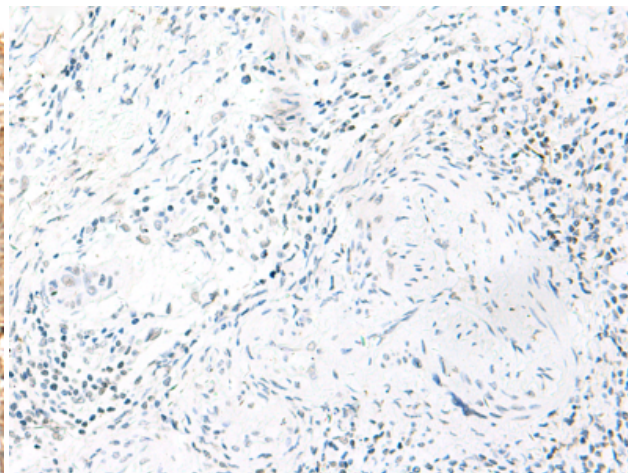
Constituents: PBS (without Mg²⁺ and Ca²⁺), pH 7.4, 150 mM NaCl, 0.05% Sodium Azide and 40% glycerol

Research Areas: Signal Transduction

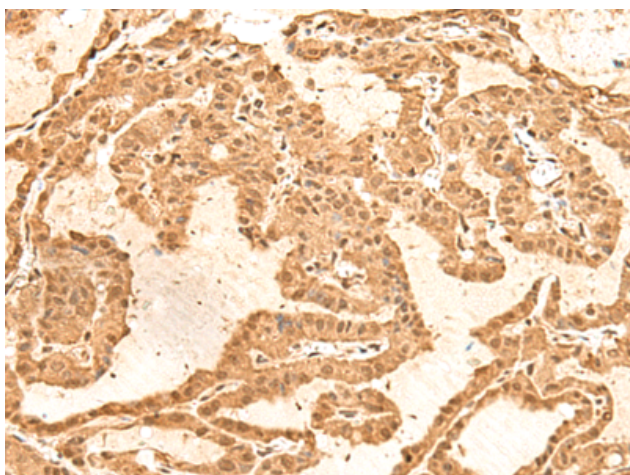
Storage & Shipping: Store at -20°C. Avoid repeated freezing and thawing



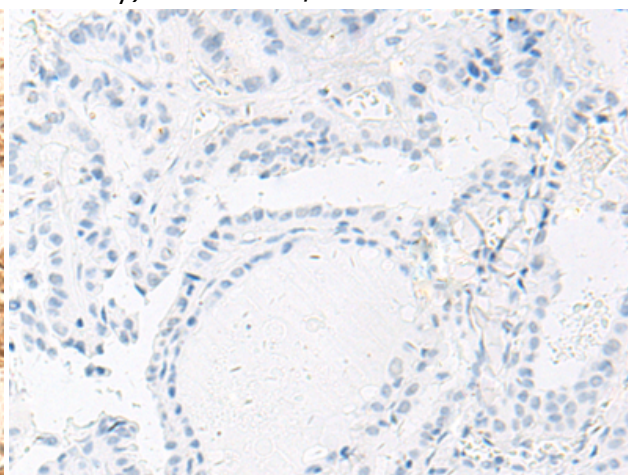
Immunohistochemistry analysis of paraffin embedded Human esophagus cancer tissue using 218817 (TIPRL Antibody) at a dilution of 1/60 (Cytoplasm and Nucleus).



In comparison with the IHC on the left, the same paraffin-embedded Human esophagus cancer tissue is first treated with the fusion protein and then with 218817 (Anti-TIPRL Antibody) at dilution 1/60.



The image on the left is immunohistochemistry of paraffin-embedded Human thyroid cancer tissue using 218817 (Anti-TIPRL Antibody) at a dilution of 1/60.



In comparison with the IHC on the left, the same paraffin-embedded Human thyroid cancer tissue is first treated with fusion protein and then with D225277 (Anti-TIPRL Antibody) at dilution 1/60.