

TISSUE FACTOR PATHWAY INHIBITOR RABBIT MAB

Cat.#: N263577

Product Name: Anti-Tissue Factor Pathway Inhibitor Rabbit Monoclonal Antibody

Synonyms: EPI; TFI; LACI; TFP11

UNIPROT ID: P10646

Background: Inhibits factor X (X(a)) directly and, in a Xa-dependent way, inhibits VIIa/tissue factor activity, presumably by forming a quaternary Xa/LACI/VIIa/TF complex. It possesses an antithrombotic action and also the ability to associate with lipoproteins in plasma.

Immunogen: Recombinant protein of human TFPI

Applications: WB,IP

Recommended Dilutions: WB: 1/500-1/1000 IP: 1/20

Host Species: Rabbit

Clonality: Rabbit Monoclonal

Clone ID: R07-6A6

MW: Calculated MW: 35 kDa; Observed MW: 40-55 kDa

Isotype: IgG

Purification: Affinity Purified

Species Reactivity: Human

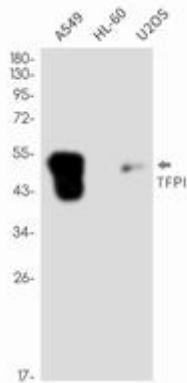
Conjugation: Unconjugated

Modification: Unmodified

Constituents: PBS (without Mg²⁺ and Ca²⁺), pH 7.3 containing 50% glycerol, 0.5% BSA and 0.02% sodium azide

Research Areas: Cardiovascular

Storage & Shipping: Store at -20°C. Avoid repeated freezing and thawing



Western blot analysis of TFPI in A549, HL-60, U2OS lysates using TFPI antibody.