

TLE1/2/3/4 RABBIT PAB

Cat.#: N225018

Product Name: Anti-TLE1/2/3/4 Rabbit pAb

Synonyms: similar to transducin-like enhancer of split 1/2/3/4

UNIPROT ID: Q04724/Q04725/Q04726/Q04727

Background: Transcriptional corepressor that binds to a number of transcription factors. Inhibits NF-kappa-B-regulated gene expression. Inhibits the transcriptional activation mediated by FOXA2, and by CTNNB1 and TCF family members in Wnt signaling.

Immunogen: The antiserum was produced against synthesized peptide derived from the C-terminal region of human TLE1/TLE2/TLE3/TLE4. AA range:721-770

Applications: WB,IHC-P,ELISA

Recommended Dilutions: WB: 1/500-1/1000 ELISA: 1/10000

Host Species: Rabbit

Clonality: Rabbit Polyclonal

Clone ID: -

MW: Calculated MW: 83 kDa; Observed MW: 90 kDa

Isotype: IgG

Purification: Affinity Purified

Species Reactivity: Human,Mouse,Rat

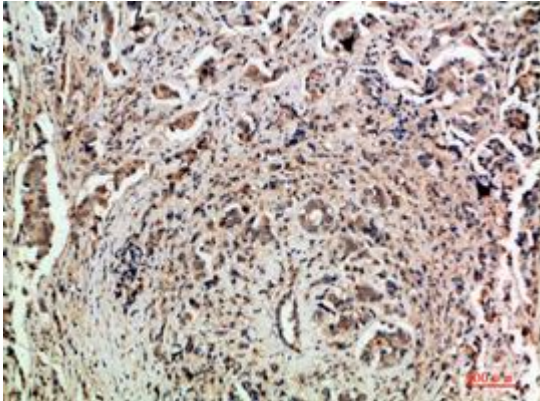
Conjugation: Unconjugated

Modification: Unmodified

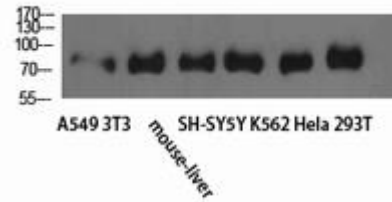
Constituents: PBS (without Mg²⁺ and Ca²⁺), pH 7.3 containing 50% glycerol, 0.5% BSA and 0.02% sodium azide

Research Areas: Epigenetics and Nuclear Signaling

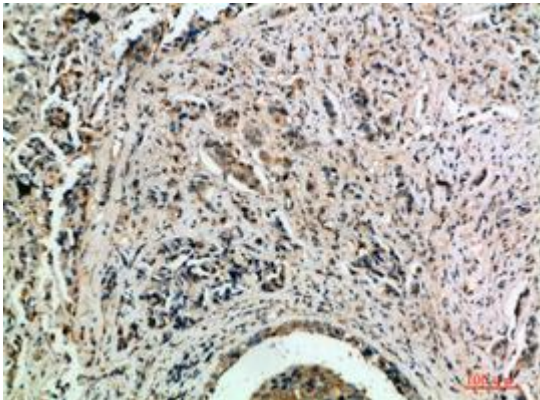
Storage & Shipping: Store at -20°C. Avoid repeated freezing and thawing



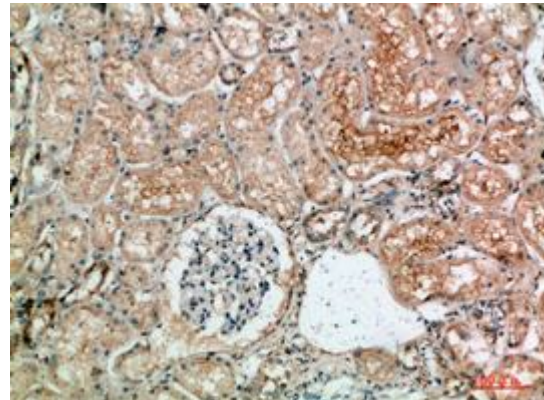
Immunohistochemistry analysis of paraffin-embedded Human breastcancer using TLE1/2/3/4 antibody. High-pressure and temperature Sodium Citrate pH 6.0 was used for antigen retrieval.



Western blot analysis of TLE1/2/3/4 in A549, 3T3, mouse liver, SH-SY5Y, K562, HeLa, 293T lysates using TLE1/2/3/4 antibody.



Immunohistochemistry analysis of paraffin-embedded Human breastcancer using TLE1/2/3/4 antibody. High-pressure and temperature Sodium Citrate pH 6.0 was used for antigen retrieval.



Immunohistochemistry analysis of paraffin-embedded Human kidney using TLE1/2/3/4 antibody. High-pressure and temperature Sodium Citrate pH 6.0 was used for antigen retrieval.