

## TLL1 RABBIT PAB

**Cat.#:** S219374

**Product Name:** Anti-TLL1 Rabbit Polyclonal Antibody

**Synonyms:** TLL; ASD6

**UNIPROT ID:** O43897 (Gene Accession - BC016922 )

**Background:** This gene encodes an astacin-like, zinc-dependent, metalloprotease that belongs to the peptidase M12A family. This protease processes procollagen C-propeptides, such as chordin, pro-biglycan and pro-lysyl oxidase. Studies in mice suggest that this gene plays multiple roles in the development of mammalian heart, and is essential for the formation of the interventricular septum. Allelic variants of this gene are associated with atrial septal defect type 6. Alternatively spliced transcript variants encoding different isoforms have been found for this gene. [provided by RefSeq, Mar 2011]

**Immunogen:** Fusion protein of human TLL1

**Applications:** ELISA, IHC

**Recommended Dilutions:** IHC: 100-300; ELISA: 5000-10000

**Host Species:** Rabbit

**Clonality:** Rabbit Polyclonal

**Isotype:** Immunogen-specific rabbit IgG

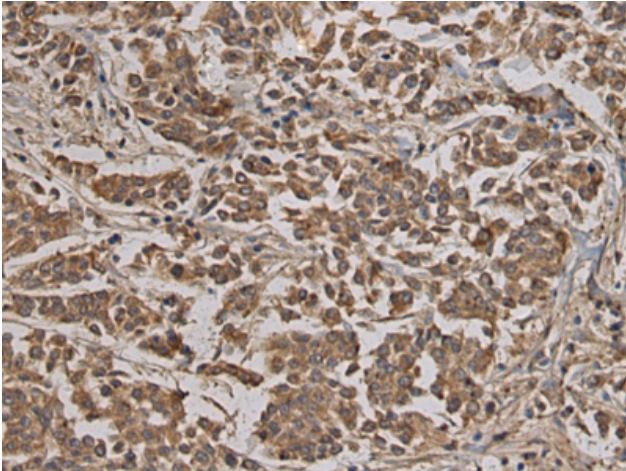
**Purification:** Antigen affinity purification

**Species Reactivity:** Human, Mouse

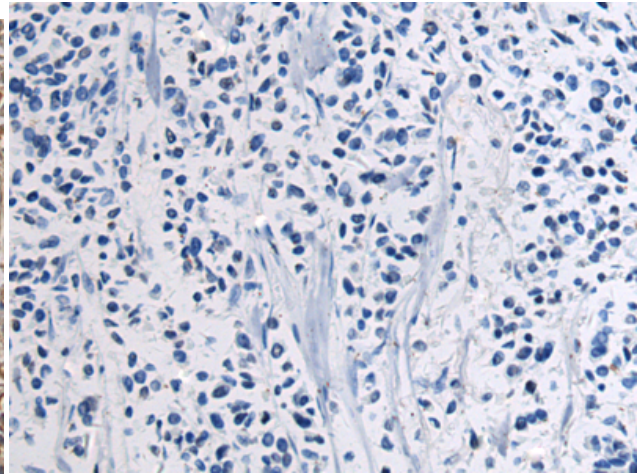
**Constituents:** PBS (without Mg<sup>2+</sup> and Ca<sup>2+</sup>), pH 7.4, 150 mM NaCl, 0.05% Sodium Azide and 40% glycerol

**Research Areas:** Signal Transduction, Developmental Biology

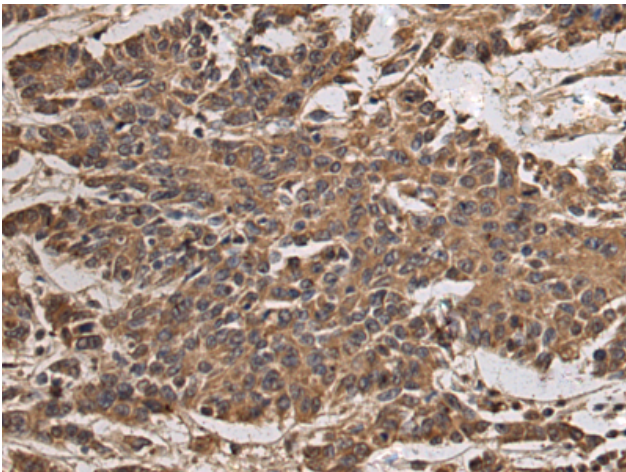
**Storage & Shipping:** Store at -20°C. Avoid repeated freezing and thawing



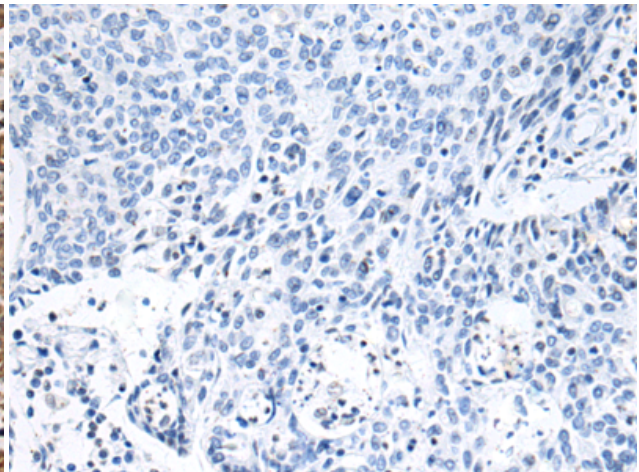
Immunohistochemistry analysis of paraffin embedded Human breast cancer tissue using 219374(TLL1 Antibody) at a dilution of 1/90(Secreted).



In comparison with the IHC on the left, the same paraffin-embedded Human breast cancer tissue is first treated with the fusion protein and then with 219374(Anti-TLL1 Antibody) at dilution 1/90.



The image on the left is immunohistochemistry of paraffin-embedded Human colorectal cancer tissue using 219374(Anti-TLL1 Antibody) at a dilution of 1/90.



In comparison with the IHC on the left, the same paraffin-embedded Human colorectal cancer tissue is first treated with fusion protein and then with D226569(Anti-TLL1 Antibody) at dilution 1/90.