

## TLN1 RABBIT PAB

**Cat.#:** S220999

**Product Name:** Anti-TLN1 Rabbit Polyclonal Antibody

**Synonyms:** TLN; ILWEQ

**UNIPROT ID:** Q9Y490 (Gene Accession - NP\_006280 )

**Background:** This gene encodes a cytoskeletal protein that is concentrated in areas of cell-substratum and cell-cell contacts. The encoded protein plays a significant role in the assembly of actin filaments and in spreading and migration of various cell types, including fibroblasts and osteoclasts. It codistributes with integrins in the cell surface membrane in order to assist in the attachment of adherent cells to extracellular matrices and of lymphocytes to other cells.

**Immunogen:** Synthetic peptide of human TLN1

**Applications:** ELISA, WB, IHC

**Recommended Dilutions:** IHC: 25-100;WB: 500-2000;ELISA: 2000-5000

**Host Species:** Rabbit

**Clonality:** Rabbit Polyclonal

**Isotype:** Immunogen-specific rabbit IgG

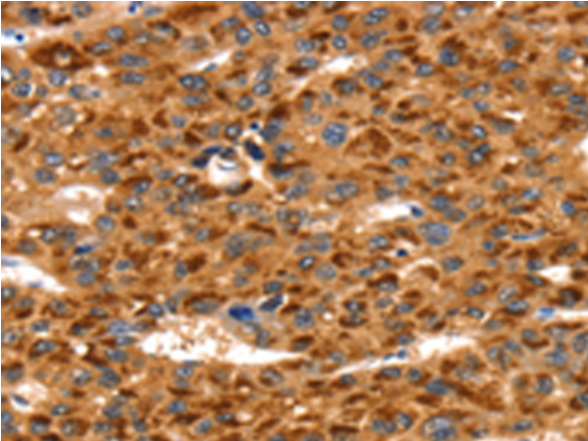
**Purification:** Antigen affinity purification

**Species Reactivity:** Human, Mouse

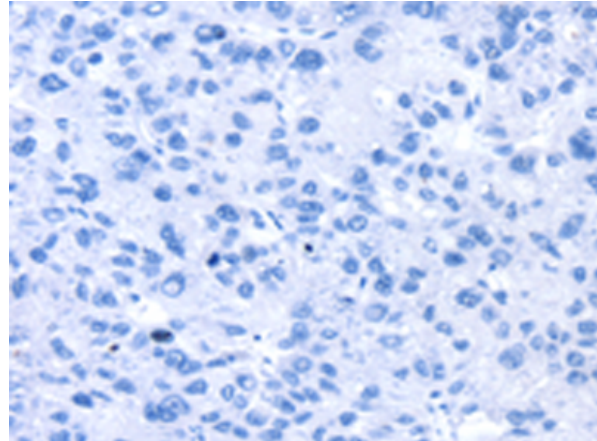
**Constituents:** PBS (without Mg<sup>2+</sup> and Ca<sup>2+</sup>), pH 7.4, 150 mM NaCl, 0.05% Sodium Azide and 40% glycerol

**Research Areas:** Signal Transduction

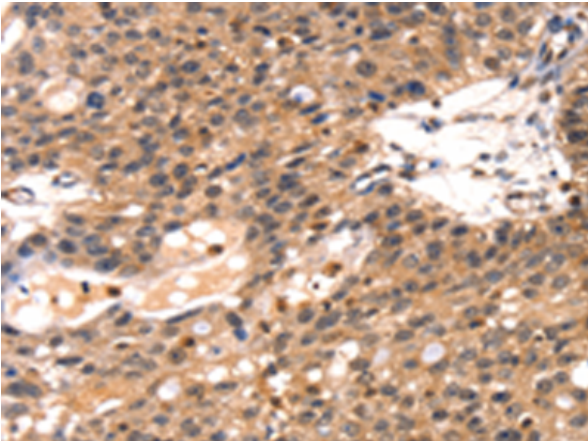
**Storage & Shipping:** Store at -20°C. Avoid repeated freezing and thawing



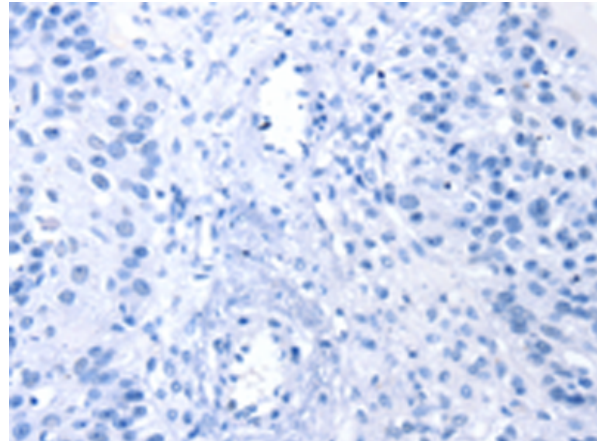
Immunohistochemistry analysis of paraffin embedded Human liver cancer tissue using 220999(TLNI Antibody) at a dilution of 1/35(Cytoplasm and Cell membrane).



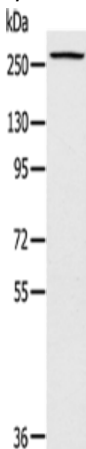
In comparison with the IHC on the left, the same paraffin-embedded Human liver cancer tissue is first treated with the synthetic peptide and then with 220999(Anti-TLNI Antibody) at dilution 1/35.



The image on the left is immunohistochemistry of paraffin-embedded Human breast cancer tissue using 220999(Anti-TLNI Antibody) at a dilution of 1/35.



In comparison with the IHC on the left, the same paraffin-embedded Human breast cancer tissue is first treated with synthetic peptide and then with D262338(Anti-TLNI Antibody) at dilution 1/35.



Gel: 6%SDS-PAGE, Lysate: 40 µg;  
 Lane: Huvec cells;  
 Primary antibody: 220999(TLNI Antibody) at dilution 1/200;  
 Secondary antibody: Goat anti rabbit IgG at 1/8000 dilution;  
 Exposure time: 5 seconds



# Product Description

Pioneering GTPase and Oncogene Product Development since 2010

---