

TM7SF2 RABBIT PAB

Cat.#: S221029

Product Name: Anti-TM7SF2 Rabbit Polyclonal Antibody

Synonyms: ANG1; NET47; DHCR14A

UNIPROT ID: O76062 (Gene Accession - NP_003264)

Background: Transmembrane 7 superfamily member 2 (TM7SF2, Sterol C14-reductase, 3beta-hydroxysterol Delta-reductase) is a 418 amino acid gene product that belongs to the ERG4/ERG24 family. TM7SF2 is a seven pass transmembrane protein that can localize to the membrane of the endoplasmic reticulum. TM7SF2 is involved in the conversion of lanosterol to cholesterol and, specifically, catalyzes the NADPH dependant reduction of 4,4-dimethyl-5-alpha-cholesta-8,14,24-trien-3-beta-ol to 4,4-dimethyl-5-alpha-cholesta-8,24-dien-3-beta-ol and NADP+.

Immunogen: Synthetic peptide of human TM7SF2

Applications: ELISA, WB, IHC

Recommended Dilutions: IHC: 25-100;WB: 500-2000;ELISA: 2000-5000

Host Species: Rabbit

Clonality: Rabbit Polyclonal

Isotype: Immunogen-specific rabbit IgG

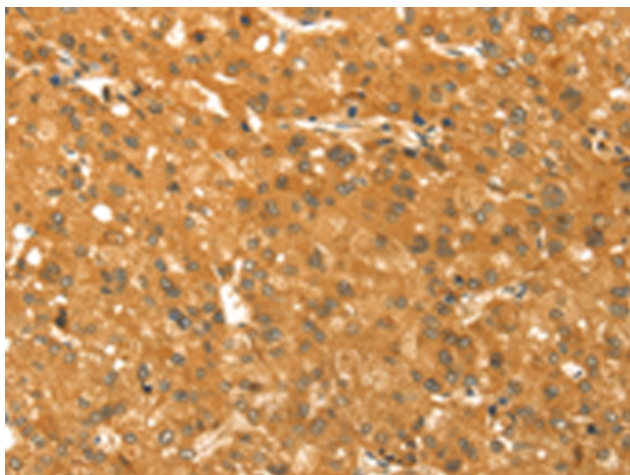
Purification: Antigen affinity purification

Species Reactivity: Human, Mouse

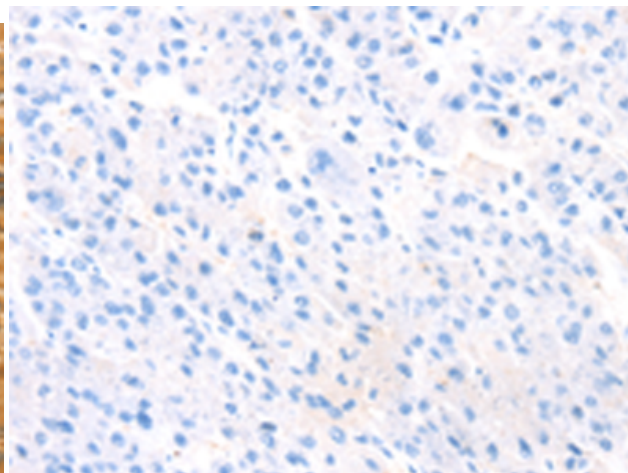
Constituents: PBS (without Mg²⁺ and Ca²⁺), pH 7.4, 150 mM NaCl, 0.05% Sodium Azide and 40% glycerol

Research Areas: Metabolism

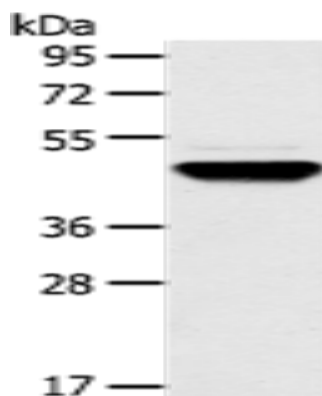
Storage & Shipping: Store at -20°C. Avoid repeated freezing and thawing



Immunohistochemistry analysis of paraffin embedded Human liver cancer tissue using 221029(TM7SF2 Antibody) at a dilution of 1/30(Cytoplasm).



In comparison with the IHC on the left, the same paraffin-embedded Human liver cancer tissue is first treated with the synthetic peptide and then with 221029(Anti-TM7SF2 Antibody) at dilution 1/30.



Gel: 8%SDS-PAGE, Lysate: 40 μ g;
Lane: Human fetal brain tissue;
Primary antibody: 221029(TM7SF2 Antibody) at dilution 1/500;
Secondary antibody: Goat anti rabbit IgG at 1/8000 dilution;
Exposure time: 1 minute