

## TMA16 RABBIT PAB

**Cat.#:** S218832

**Product Name:** Anti-TMA16 Rabbit Polyclonal Antibody

**Synonyms:** C4orf43

**UNIPROT ID:** Q96EY4 (Gene Accession - BC011842 )

**Background:** The function of this protein remains unknown.

**Immunogen:** Fusion protein of human TMA16

**Applications:** ELISA, IHC

**Recommended Dilutions:** IHC: 100-200; ELISA: 5000-10000

**Host Species:** Rabbit

**Clonality:** Rabbit Polyclonal

**Isotype:** Immunogen-specific rabbit IgG

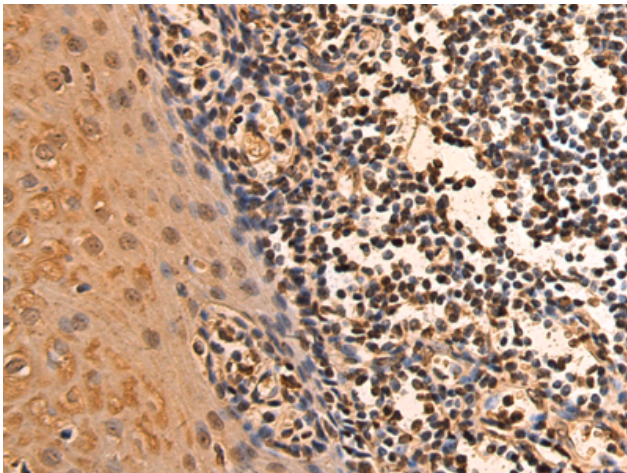
**Purification:** Antigen affinity purification

**Species Reactivity:** Human

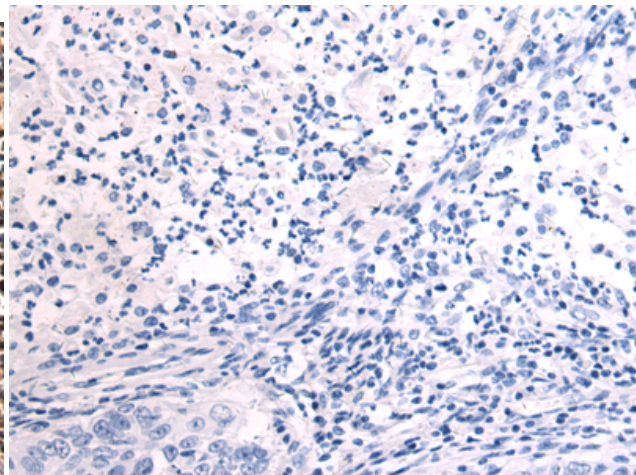
**Constituents:** PBS (without Mg<sup>2+</sup> and Ca<sup>2+</sup>), pH 7.4, 150 mM NaCl, 0.05% Sodium Azide and 40% glycerol

**Research Areas:** Cell Biology

**Storage & Shipping:** Store at -20°C. Avoid repeated freezing and thawing



Immunohistochemistry analysis of paraffin embedded Human esophagus cancer tissue using 218832(TMA16 Antibody) at a dilution of 1/105(Nucleus and Cytoplasm).



In comparison with the IHC on the left, the same paraffin-embedded Human esophagus cancer tissue is first treated with the fusion protein and then with 218832(Anti-TMA16 Antibody) at dilution 1/105.