

## TMC7 RABBIT PAB

**Cat.#:** S222431

**Product Name:** Anti-TMC7 Rabbit Polyclonal Antibody

**Synonyms:**

**UNIPROT ID:** Q7Z402 (Gene Accession - NP\_079123 )

**Background:** Predicted to enable mechanosensitive ion channel activity. Predicted to be involved in ion transmembrane transport. Predicted to be integral component of plasma membrane.

**Immunogen:** Synthetic peptide of human TMC7

**Applications:** ELISA, WB, IHC

**Recommended Dilutions:** IHC: 50-200;WB: 1000-5000;ELISA: 5000-10000

**Host Species:** Rabbit

**Clonality:** Rabbit Polyclonal

**Isotype:** Immunogen-specific rabbit IgG

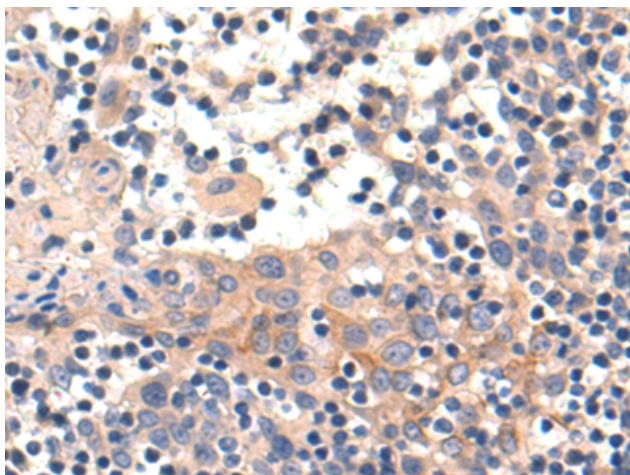
**Purification:** Antigen affinity purification

**Species Reactivity:** Human, Mouse

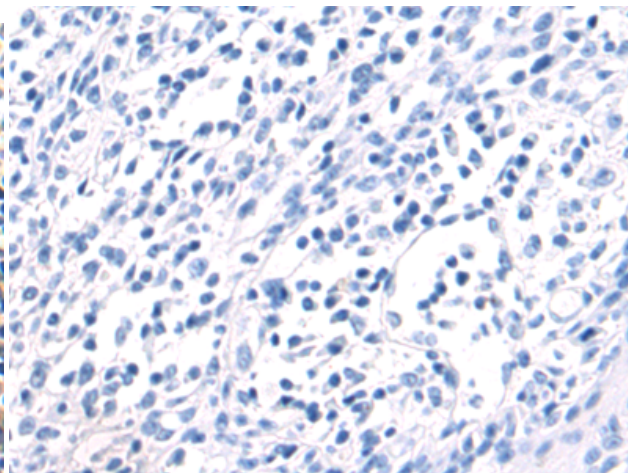
**Constituents:** PBS (without Mg<sup>2+</sup> and Ca<sup>2+</sup>), pH 7.4, 150 mM NaCl, 0.05% Sodium Azide and 40% glycerol

**Research Areas:** Cell Biology

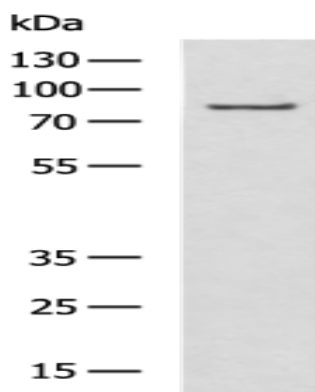
**Storage & Shipping:** Store at -20°C. Avoid repeated freezing and thawing



Immunohistochemistry analysis of paraffin embedded Human tonsil tissue using 222431(TMC7 Antibody) at a dilution of 1/50(Cytoplasm and Cell membrane).



In comparison with the IHC on the left, the same paraffin-embedded Human tonsil tissue is first treated with the synthetic peptide and then with 222431(Anti-TMC7 Antibody) at dilution 1/50.



Gel: 8%SDS-PAGE, Lysate: 40 µg;  
Lane: Mouse liver tissue lysate;  
Primary antibody: 222431(TMC7 Antibody) at dilution 1/1150;  
Secondary antibody: HRP-conjugated Goat anti rabbit IgG at 1/5000 dilution;  
Exposure time: 10 seconds