

## TMED3 RABBIT PAB

**Cat.#:** S217917

**Product Name:** Anti-TMED3 Rabbit Polyclonal Antibody

**Synonyms:** p26; P24B; C15orf22

**UNIPROT ID:** Q9Y3Q3 (Gene Accession - BC000027 )

**Background:** Potential role in vesicular protein trafficking, mainly in the early secretory pathway. Contributes to the coupled localization of TMED2 and TMED10 in the cis-Golgi network.

**Immunogen:** Fusion protein of human TMED3

**Applications:** ELISA, IHC

**Recommended Dilutions:** IHC: 25-100; ELISA: 2000-5000

**Host Species:** Rabbit

**Clonality:** Rabbit Polyclonal

**Isotype:** Immunogen-specific rabbit IgG

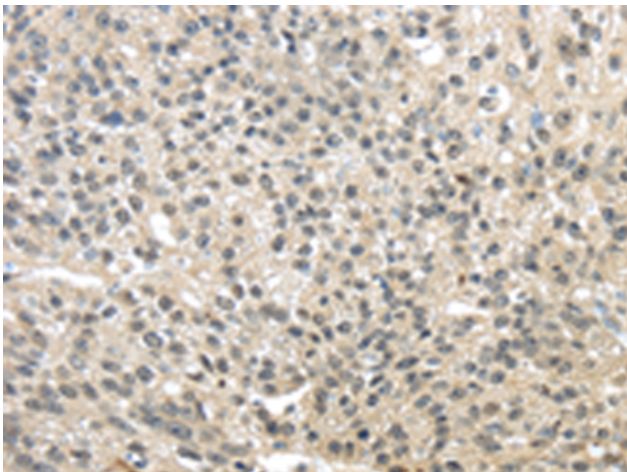
**Purification:** Antigen affinity purification

**Species Reactivity:** Human, Mouse, Rat

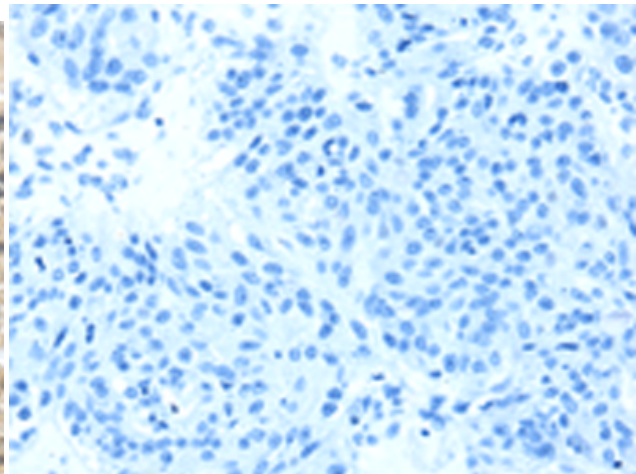
**Constituents:** PBS (without Mg<sup>2+</sup> and Ca<sup>2+</sup>), pH 7.4, 150 mM NaCl, 0.05% Sodium Azide and 40% glycerol

**Research Areas:** Signal Transduction

**Storage & Shipping:** Store at -20°C. Avoid repeated freezing and thawing



Immunohistochemistry analysis of paraffin embedded Human breast cancer tissue using 217917(TMED3 Antibody) at a dilution of 1/25(Nucleus and Cytoplasm).



In comparison with the IHC on the left, the same paraffin-embedded Human breast cancer tissue is first treated with the fusion protein and then with 217917(Anti-TMED3 Antibody) at dilution 1/25.