

## TMED4 RABBIT PAB

**Cat.#:** S217918

**Product Name:** Anti-TMED4 Rabbit Polyclonal Antibody

**Synonyms:** HNFLF; ERS25; p24a3; GMP25iso;

**UNIPROT ID:** Q7Z7H5 (Gene Accession - BC057851)

**Background:** Involved in vesicular protein trafficking, mainly in the early secretory pathway. targeting. Involved in the maintenance of the Golgi apparatus. Appears to play a role in the biosynthesis of secreted cargo including processing. Involved in endoplasmic reticulum stress response. May play a role in the regulation of heat-shock response and apoptosis (By similarity).

**Immunogen:** Fusion protein of human TMED4

**Applications:** ELISA, WB, IHC

**Recommended Dilutions:** IHC: 200-400;WB: 1000-5000;ELISA: 5000-10000

**Host Species:** Rabbit

**Clonality:** Rabbit Polyclonal

**Isotype:** Immunogen-specific rabbit IgG

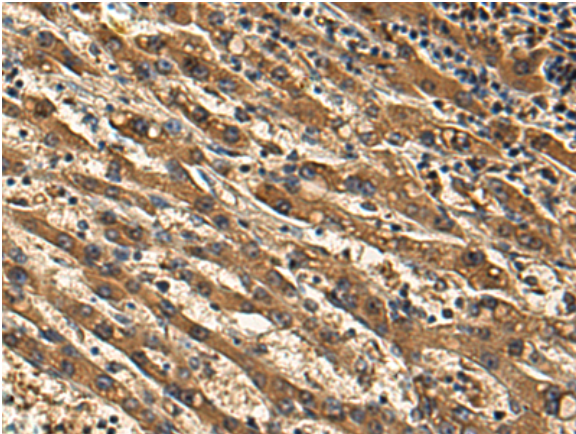
**Purification:** Antigen affinity purification

**Species Reactivity:** Human, Mouse

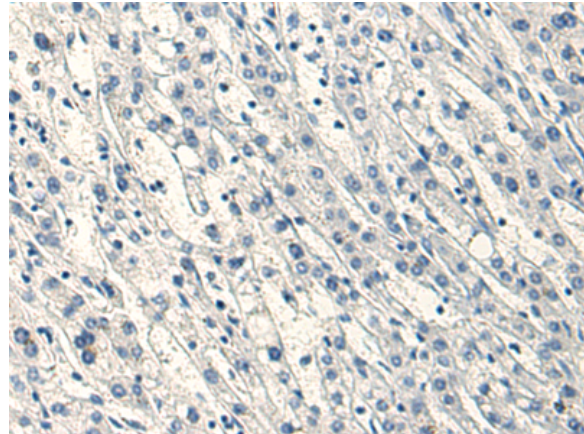
**Constituents:** PBS (without Mg<sup>2+</sup> and Ca<sup>2+</sup>), pH 7.4, 150 mM NaCl, 0.05% Sodium Azide and 40% glycerol

**Research Areas:** Signal Transduction, Epigenetics and Nuclear Signaling

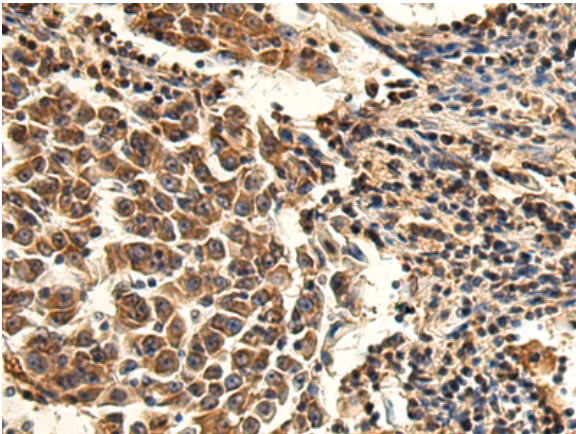
**Storage & Shipping:** Store at -20°C. Avoid repeated freezing and thawing



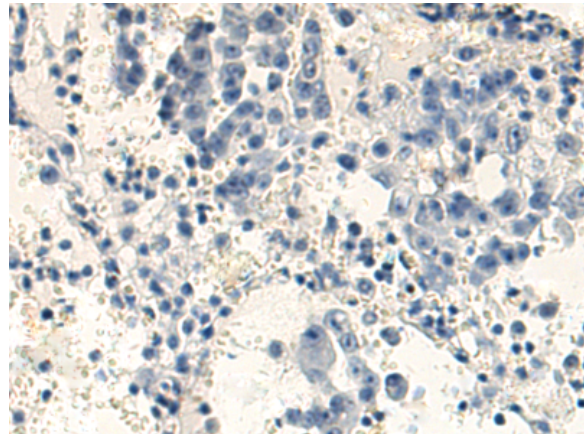
Immunohistochemistry analysis of paraffin embedded Human liver cancer tissue using 217918 (TMED4 Antibody) at a dilution of 1/180 (Cytoplasm).



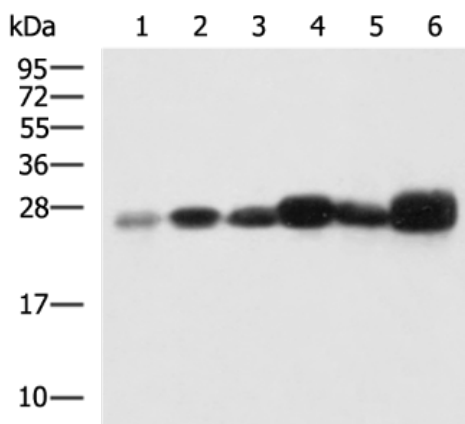
In comparison with the IHC on the left, the same paraffin-embedded Human liver cancer tissue is first treated with the fusion protein and then with 217918 (Anti-TMED4 Antibody) at dilution 1/180.



The image on the left is immunohistochemistry of paraffin-embedded Human lung cancer tissue using 217918 (Anti-TMED4 Antibody) at a dilution of 1/180.



In comparison with the IHC on the left, the same paraffin-embedded Human lung cancer tissue is first treated with fusion protein and then with D223373 (Anti-TMED4 Antibody) at dilution 1/180.



Gel: 12% SDS-PAGE, Lysate: 40  $\mu$ g;  
 Lane 1-6: Human liver tissue, Mouse liver tissue,  
 Mouse small intestines tissue, Hela cell, K562 cell,  
 HepG2 cell lysates;  
 Primary antibody: 217918 (TMED4 Antibody) at  
 dilution 1/1000;  
 Secondary antibody: HRP-conjugated Goat anti  
 rabbit IgG at 1/5000 dilution;  
 Exposure time: 1 minute



# Product Description

Pioneering GTPase and Oncogene Product Development since 2010

---