

TMEM161A RABBIT PAB

Cat.#: S217919

Product Name: Anti-TMEM161A Rabbit Polyclonal Antibody

Synonyms: AROS-29

UNIPROT ID: Q9NX61 (Gene Accession - BC005210)

Background: May play a role in protection against oxidative stress. Overexpression leads to reduced levels of oxidant-induced DNA damage and apoptosis.

Immunogen: Fusion protein of human TMEM161A

Applications: ELISA, IHC

Recommended Dilutions: IHC: 25-100; ELISA: 2000-5000

Host Species: Rabbit

Clonality: Rabbit Polyclonal

Isotype: Immunogen-specific rabbit IgG

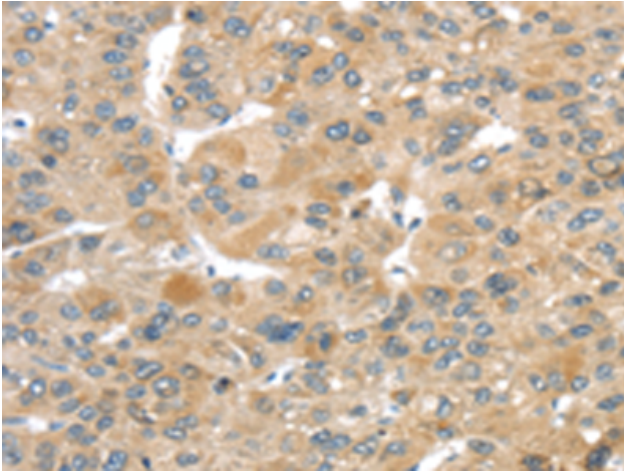
Purification: Antigen affinity purification

Species Reactivity: Human, Mouse

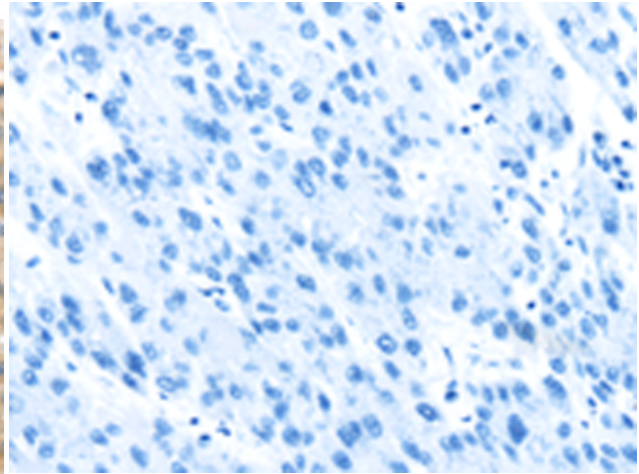
Constituents: PBS (without Mg²⁺ and Ca²⁺), pH 7.4, 150 mM NaCl, 0.05% Sodium Azide and 40% glycerol

Research Areas: Epigenetics and Nuclear Signaling, Cancer, Cell Biology

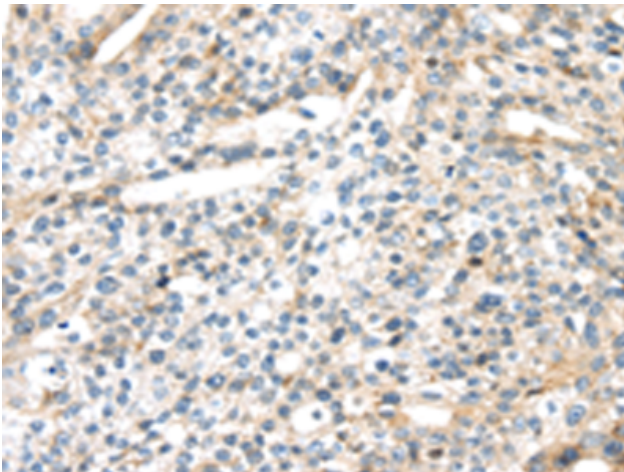
Storage & Shipping: Store at -20°C. Avoid repeated freezing and thawing



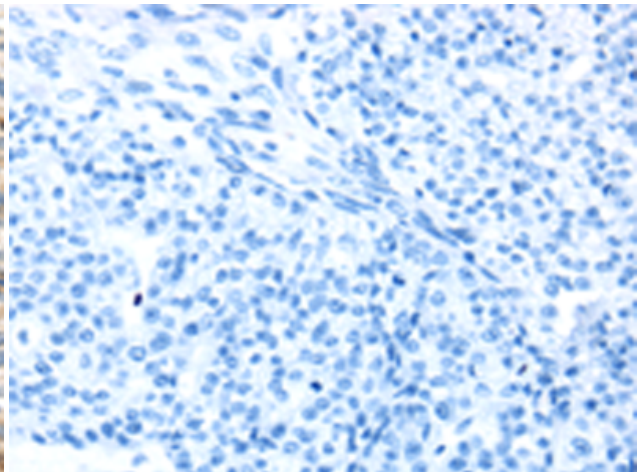
Immunohistochemistry analysis of paraffin embedded Human liver cancer tissue using 217919 (TMEM161A Antibody) at a dilution of 1/30 (Cytoplasm).



In comparison with the IHC on the left, the same paraffin-embedded Human liver cancer tissue is first treated with the fusion protein and then with 217919 (Anti-TMEM161A Antibody) at dilution 1/30.



The image on the left is immunohistochemistry of paraffin-embedded Human breast cancer tissue using 217919 (Anti-TMEM161A Antibody) at a dilution of 1/30.



In comparison with the IHC on the left, the same paraffin-embedded Human breast cancer tissue is first treated with fusion protein and then with D223374 (Anti-TMEM161A Antibody) at dilution 1/30.