

## TMEM248 RABBIT PAB

**Cat.#:** S218641

**Product Name:** Anti-TMEM248 Rabbit Polyclonal Antibody

**Synonyms:** C7orf42

**UNIPROT ID:** Q9NWD8 (Gene Accession - BC008675 )

**Background:** The function of this protein remains unknown.

**Immunogen:** Fusion protein of human TMEM248

**Applications:** ELISA, IHC

**Recommended Dilutions:** IHC: 30-150; ELISA: 5000-10000

**Host Species:** Rabbit

**Clonality:** Rabbit Polyclonal

**Isotype:** Immunogen-specific rabbit IgG

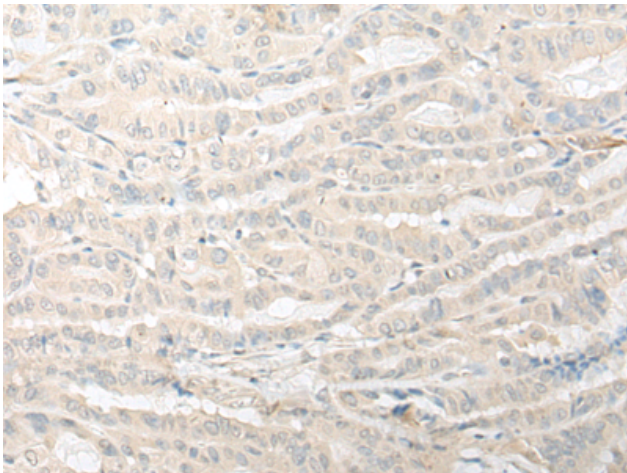
**Purification:** Antigen affinity purification

**Species Reactivity:** Human, Mouse, Rat

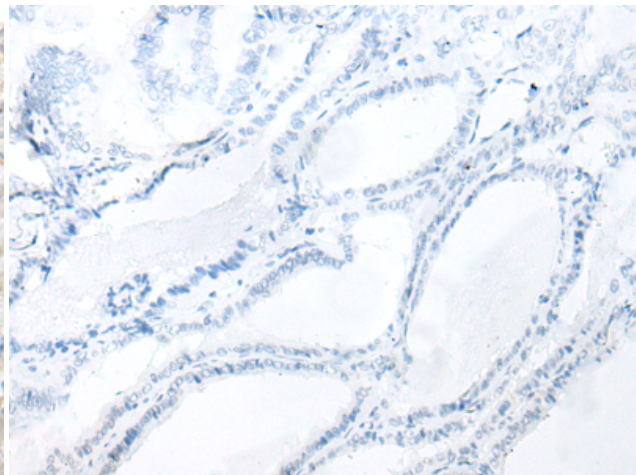
**Constituents:** PBS (without Mg<sup>2+</sup> and Ca<sup>2+</sup>), pH 7.4, 150 mM NaCl, 0.05% Sodium Azide and 40% glycerol

**Research Areas:** Cell Biology

**Storage & Shipping:** Store at -20°C. Avoid repeated freezing and thawing



Immunohistochemistry analysis of paraffin embedded Human thyroid cancer tissue using 218641 (TMEM248 Antibody) at a dilution of 1/30 (Cytoplasm).



In comparison with the IHC on the left, the same paraffin-embedded Human thyroid cancer tissue is first treated with the fusion protein and then with 218641 (Anti-TMEM248 Antibody) at dilution 1/30.