

## TMEM67 RABBIT PAB

**Cat.#:** S216890

**Product Name:** Anti-TMEM67 Rabbit Polyclonal Antibody

**Synonyms:** MKS3; JBTS6; NPHP11; TNEM67; MECKELIN

**UNIPROT ID:** Q5HYA8 (Gene Accession - BC032835 )

**Background:** The protein encoded by this gene localizes to the primary cilium and to the plasma membrane. The gene functions in centriole migration to the apical membrane and formation of the primary cilium. Multiple transcript variants encoding different isoforms have been found for this gene. Defects in this gene are a cause of Meckel syndrome type 3 (MKS3) and Joubert syndrome type 6 (JBTS6).

**Immunogen:** Fusion protein of human TMEM67

**Applications:** ELISA, WB, IHC

**Recommended Dilutions:** IHC: 20-100;WB: 200-1000;ELISA: 5000-10000

**Host Species:** Rabbit

**Clonality:** Rabbit Polyclonal

**Isotype:** Immunogen-specific rabbit IgG

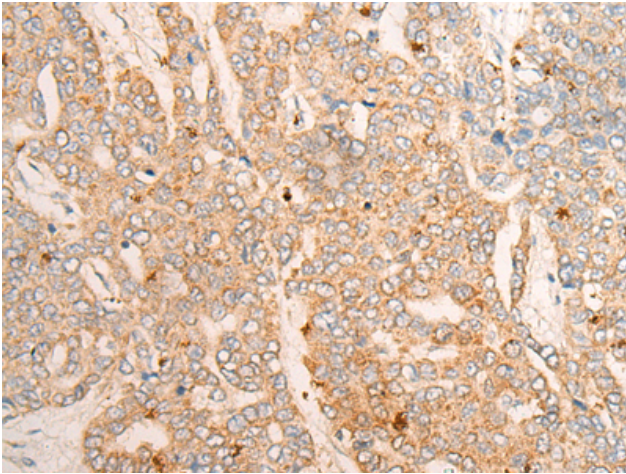
**Purification:** Antigen affinity purification

**Species Reactivity:** Human, Mouse, Rat

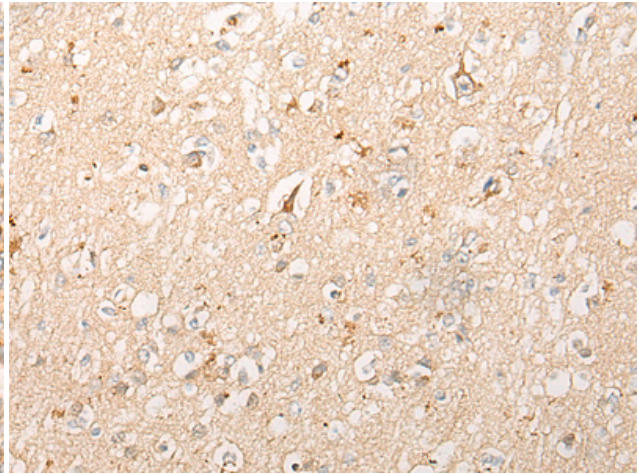
**Constituents:** PBS (without Mg<sup>2+</sup> and Ca<sup>2+</sup>), pH 7.4, 150 mM NaCl, 0.05% Sodium Azide and 40% glycerol

**Research Areas:** Cell Biology

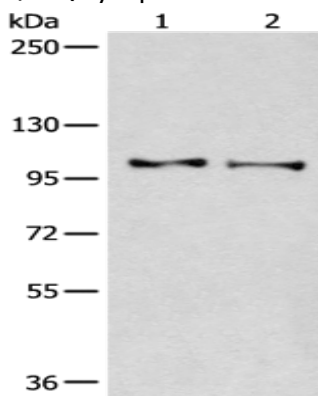
**Storage & Shipping:** Store at -20°C. Avoid repeated freezing and thawing



Immunohistochemistry analysis of paraffin-embedded Human liver cancer tissue using 216890 (TMEM67 Antibody) at a dilution of 1/20 (Cytoplasm and Cell membrane).



Immunohistochemistry analysis of paraffin-embedded Human brain tissue using 216890 (Anti-TMEM67 Antibody) at a dilution of 1/20.



Gel: 6% SDS-PAGE, Lysate: 40  $\mu$ g;  
Lane 1-2: Human kidney tissue and A549 cell lysates;  
Primary antibody: 216890 (TMEM67 Antibody) at dilution 1/200;  
Secondary antibody: Goat anti rabbit IgG at 1/8000 dilution;  
Exposure time: 10 minutes