

TMPRSS11A RABBIT PAB

Cat.#: S217924

Product Name: Anti-TMPRSS11A Rabbit Polyclonal Antibody

Synonyms: ECRG1

UNIPROT ID: Q6ZMR5 (Gene Accession - BC111796)

Background: Probable serine protease which may play a role in cellular senescence. Overexpression inhibits cell growth and induce G1 cell cycle arrest.

Immunogen: Fusion protein of human TMPRSS11A

Applications: ELISA, IHC

Recommended Dilutions: IHC: 25-100; ELISA: 2000-5000

Host Species: Rabbit

Clonality: Rabbit Polyclonal

Isotype: Immunogen-specific rabbit IgG

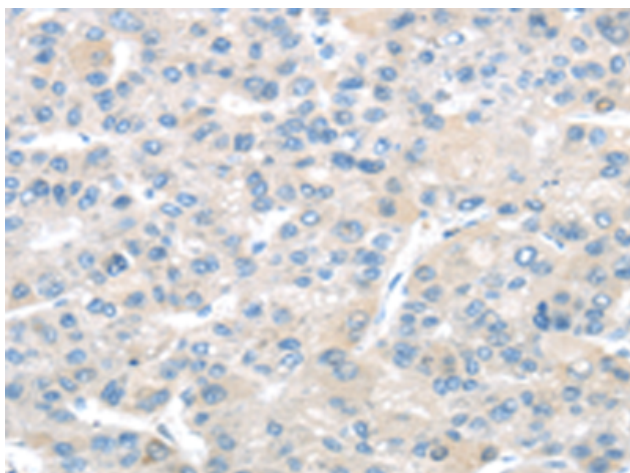
Purification: Antigen affinity purification

Species Reactivity: Human

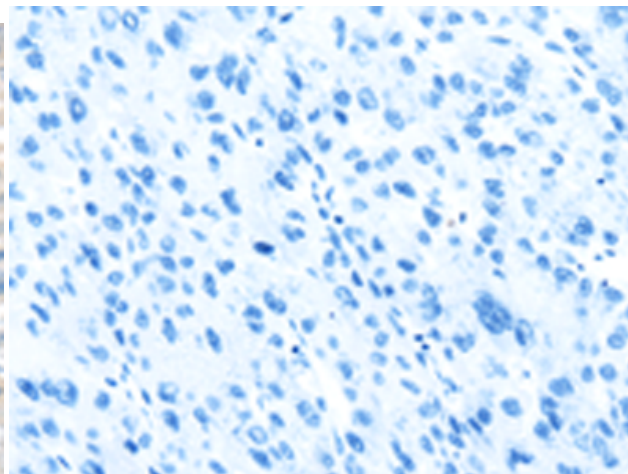
Constituents: PBS (without Mg²⁺ and Ca²⁺), pH 7.4, 150 mM NaCl, 0.05% Sodium Azide and 40% glycerol

Research Areas: Cell Biology

Storage & Shipping: Store at -20°C. Avoid repeated freezing and thawing



Immunohistochemistry analysis of paraffin embedded Human liver cancer tissue using 217924(TMPRSS11A Antibody) at a dilution of 1/20(Cell membrane).



In comparison with the IHC on the left, the same paraffin-embedded Human liver cancer tissue is first treated with the fusion protein and then with 217924(Anti-TMPRSS11A Antibody) at dilution 1/20.