

TMPRSS6 RABBIT PAB

Cat.#: S221458

Product Name: Anti-TMPRSS6 Rabbit Polyclonal Antibody

Synonyms: MT2; IRIDA

UNIPROT ID: Q8IU80 (Gene Accession - NP_001275930)

Background: The protein encoded by this gene is a type II transmembrane serine proteinase that is found attached to the cell surface. The encoded protein may be involved in matrix remodeling processes in the liver. Alternative splicing results in multiple transcript variants.

Immunogen: Synthetic peptide of human TMPRSS6

Applications: ELISA, IHC

Recommended Dilutions: IHC: 50-200; ELISA: 5000-10000

Host Species: Rabbit

Clonality: Rabbit Polyclonal

Isotype: Immunogen-specific rabbit IgG

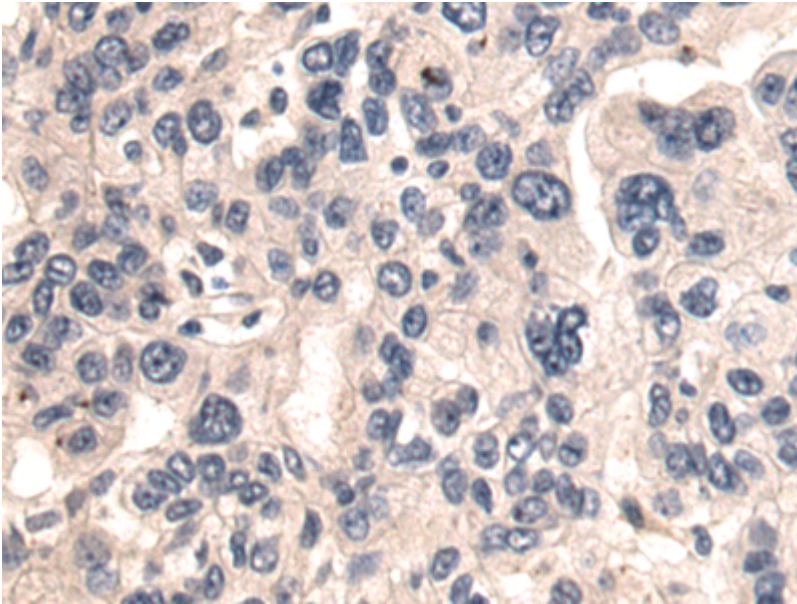
Purification: Antigen affinity purification

Species Reactivity: Human

Constituents: PBS (without Mg²⁺ and Ca²⁺), pH 7.4, 150 mM NaCl, 0.05% Sodium Azide and 40% glycerol

Research Areas: Signal Transduction, Cell Biology

Storage & Shipping: Store at -20°C. Avoid repeated freezing and thawing



Immunohistochemistry analysis of paraffin-embedded Human breast cancer tissue using 221458(TMPRSS6 Antibody) at a dilution of 1/50(Cytoplasm).