

TMSB10 RABBIT PAB

Cat.#: S220018

Product Name: Anti-TMSB10 Rabbit Polyclonal Antibody

Synonyms: TB10; MIG12

UNIPROT ID: P63313 (Gene Accession - NP_066926)

Background: This protein plays an important role in the organization of the cytoskeleton. It binds to and sequesters actin monomers (G actin) and therefore inhibits actin polymerization. Experiment indicate that the expression decrease dramatically after birth?It expresses high levels in human fetal brain.

Immunogen: Synthetic peptide of human TMSB10

Applications: ELISA, IHC

Recommended Dilutions: IHC: 50-200; ELISA: 3000-10000

Host Species: Rabbit

Clonality: Rabbit Polyclonal

Isotype: Immunogen-specific rabbit IgG

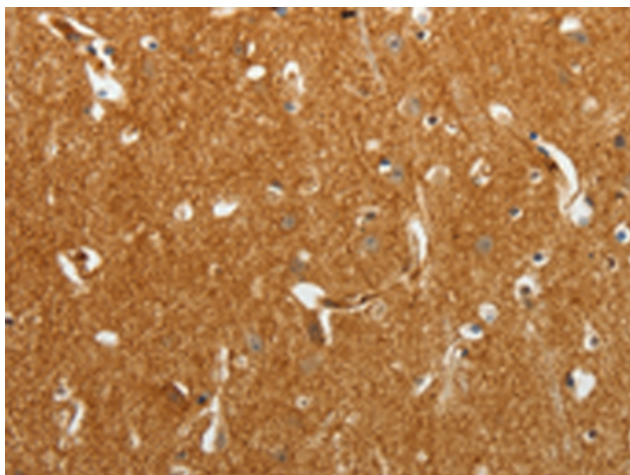
Purification: Antigen affinity purification

Species Reactivity: Human, Mouse, Rat

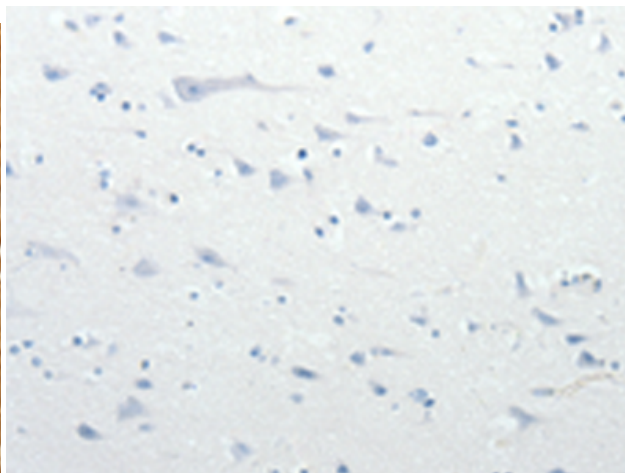
Constituents: PBS (without Mg²⁺ and Ca²⁺), pH 7.4, 150 mM NaCl, 0.05% Sodium Azide and 40% glycerol

Research Areas: Signal Transduction

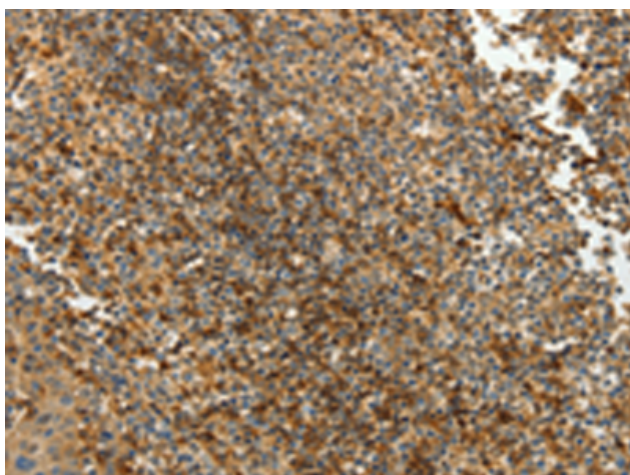
Storage & Shipping: Store at -20°C. Avoid repeated freezing and thawing



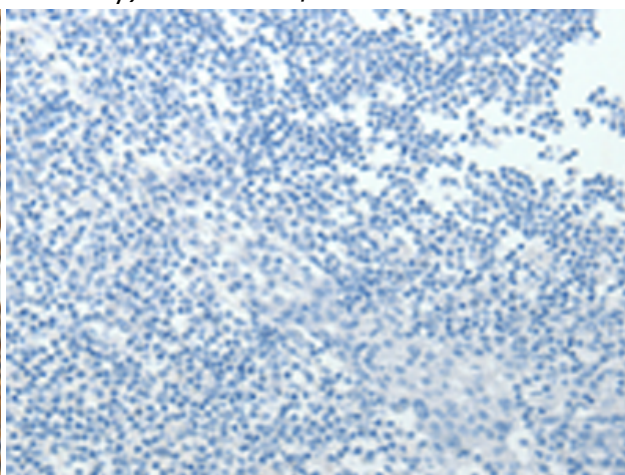
Immunohistochemistry analysis of paraffin embedded Human brain tissue using 220018(TMSB10 Antibody) at a dilution of 1/25(Cytoplasm).



In comparison with the IHC on the left, the same paraffin-embedded Human brain tissue is first treated with the synthetic peptide and then with 220018(Anti-TMSB10 Antibody) at dilution 1/25.



The image on the left is immunohistochemistry of paraffin-embedded Human tonsil tissue using 220018(Anti-TMSB10 Antibody) at a dilution of 1/25.



In comparison with the IHC on the left, the same paraffin-embedded Human tonsil tissue is first treated with synthetic peptide and then with D260786(Anti-TMSB10 Antibody) at dilution 1/25.