

## TNC RABBIT PAB

**Cat.#:** S213756

**Product Name:** Anti-TNC Rabbit Polyclonal Antibody

**Synonyms:** GP; JI; TN; HXB; GMEM; TN-C; 150-225

**UNIPROT ID:** P24821 (Gene Accession - NP\_002151)

**Background:** This gene encodes an extracellular matrix protein with a spatially and temporally restricted tissue distribution. This protein is homo-hexameric with disulfide-linked subunits, and contains multiple EGF-like and fibronectin type-III domains. It is implicated in guidance of migrating neurons as well as axons during development, synaptic plasticity, and neuronal regeneration.

**Immunogen:** Synthetic peptide of human TNC

**Applications:** ELISA, IHC

**Recommended Dilutions:** IHC: 25-100; ELISA: 2000-5000

**Host Species:** Rabbit

**Clonality:** Rabbit Polyclonal

**Isotype:** Immunogen-specific rabbit IgG

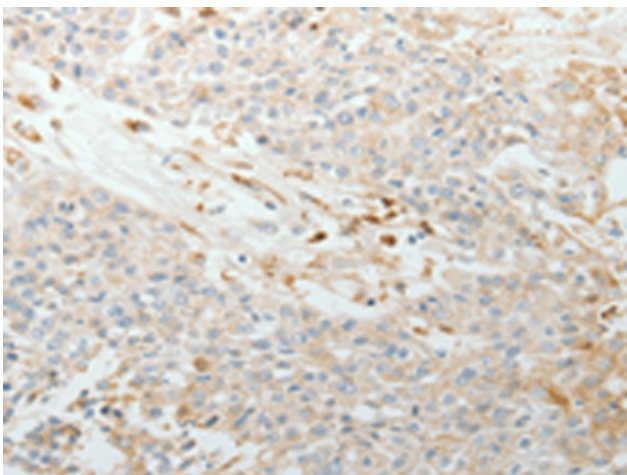
**Purification:** Antigen affinity purification

**Species Reactivity:** Human, Mouse

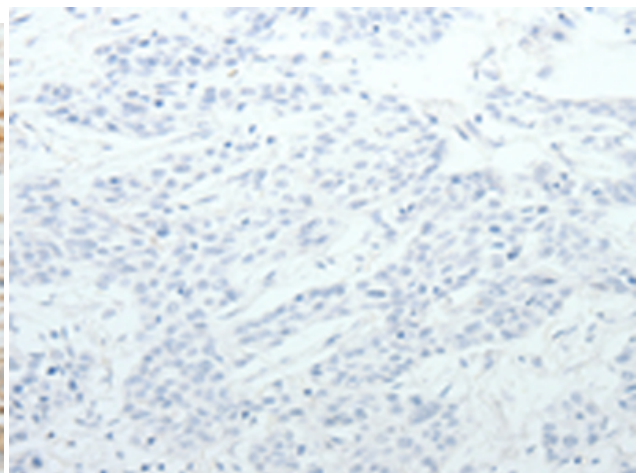
**Constituents:** PBS (without Mg<sup>2+</sup> and Ca<sup>2+</sup>), pH 7.4, 150 mM NaCl, 0.05% Sodium Azide and 40% glycerol

**Research Areas:** Neuroscience, Stem Cells

**Storage & Shipping:** Store at -20°C. Avoid repeated freezing and thawing



Immunohistochemistry analysis of paraffin embedded Human esophagus cancer tissue using 213756(TNC Antibody) at a dilution of 1/30(Secreted, ExtraCellular matrix).



In comparison with the IHC on the left, the same paraffin-embedded Human esophagus cancer tissue is first treated with the synthetic peptide and then with 213756(Anti-TNC Antibody) at dilution 1/30.