

TNFRSF10A RABBIT PAB

Cat.#: S215014

Product Name: Anti-TNFRSF10A Rabbit Polyclonal Antibody

Synonyms: DR4; APO2; CD261; TRAILR1; TRAILR-1

UNIPROT ID: O00220 (Gene Accession - NP_003835)

Background: The protein encoded by this gene is a member of the TNF-receptor superfamily. This receptor is activated by tumor necrosis factor-related apoptosis inducing ligand (TNFSF10/TRAIL), and thus transduces cell death signal and induces cell apoptosis. Studies with FADD-deficient mice suggested that FADD, a death domain containing adaptor protein, is required for the apoptosis mediated by this protein.

Immunogen: Synthetic peptide of human TNFRSF10A

Applications: ELISA, WB, IHC

Recommended Dilutions: IHC: 25-50;WB: 500-2000;ELISA: 5000-10000

Host Species: Rabbit

Clonality: Rabbit Polyclonal

Isotype: Immunogen-specific rabbit IgG

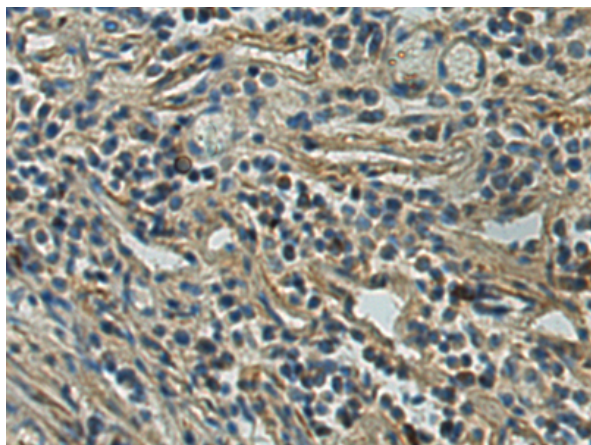
Purification: Antigen affinity purification

Species Reactivity: Human

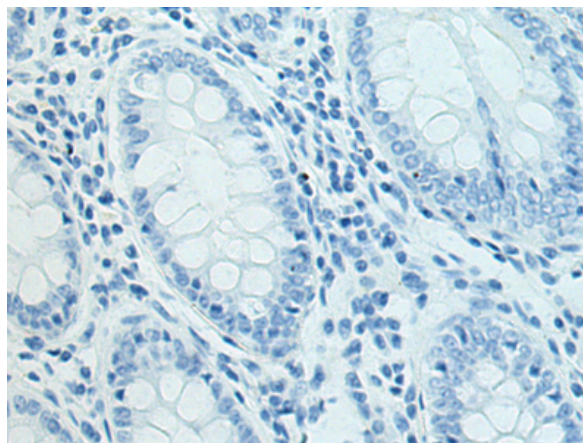
Constituents: PBS (without Mg²⁺ and Ca²⁺), pH 7.4, 150 mM NaCl, 0.05% Sodium Azide and 40% glycerol

Research Areas: Cancer, Cardiovascular, Immunology

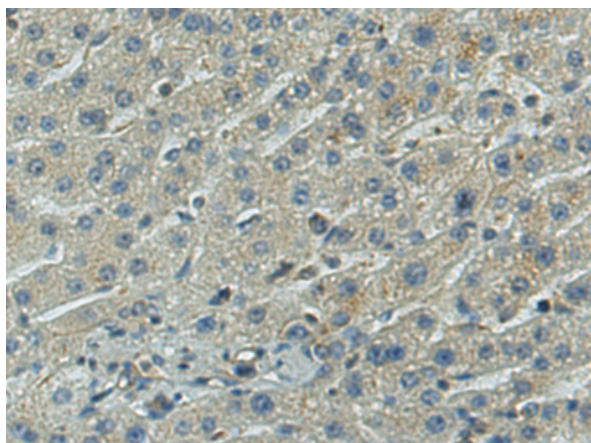
Storage & Shipping: Store at -20°C. Avoid repeated freezing and thawing



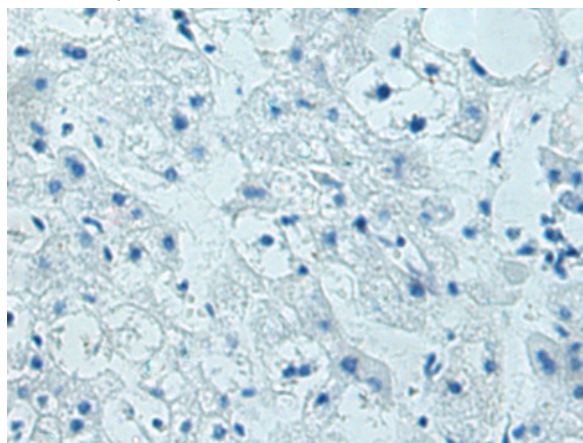
Immunohistochemistry analysis of paraffin embedded Human colorectal cancer tissue using 215014(TNFRSF10A Antibody) at a dilution of 1/20(Cytoplasm).



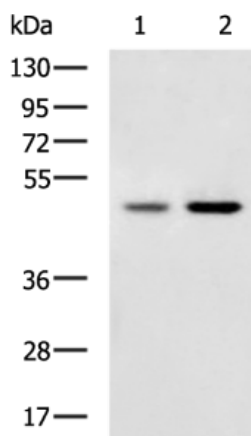
In comparison with the IHC on the left, the same paraffin-embedded Human colorectal cancer tissue is first treated with the synthetic peptide and then with 215014(Anti-TNFRSF10A Antibody) at dilution 1/20.



The image on the left is immunohistochemistry of paraffin-embedded Human liver cancer tissue using 215014(Anti-TNFRSF10A Antibody) at a dilution of 1/20.



In comparison with the IHC on the left, the same paraffin-embedded Human liver cancer tissue is first treated with synthetic peptide and then with D162761(Anti-TNFRSF10A Antibody) at dilution 1/20.



Gel: 8%SDS-PAGE, Lysate: 40 µg;
 Lane 1-2: PC-3 and LOVO cell lysates;
 Primary antibody: 215014(TNFRSF10A Antibody) at dilution 1/500;
 Secondary antibody: HRP-conjugated Goat anti rabbit IgG at 1/5000 dilution;
 Exposure time: 1 minute



Product Description

Pioneering GTPase and Oncogene Product Development since 2010
