

## TNFSF15 RABBIT PAB

**Cat.#:** S221037

**Product Name:** Anti-TNFSF15 Rabbit Polyclonal Antibody

**Synonyms:** TLI; TLIA; VEGI; VEGI192A

**UNIPROT ID:** O95150 (Gene Accession - NP\_005109 )

**Background:** The protein encoded by this gene is a cytokine that belongs to the tumor necrosis factor (TNF) ligand family. This protein is abundantly expressed in endothelial cells, but is not expressed in either B or T cells. The expression of this protein is inducible by TNF and IL-1 alpha. This cytokine is a ligand for receptor TNFRSF25 and decoy receptor TNFRSF21/DR6. It can activate NF-kappaB and MAP kinases, and acts as an autocrine factor to induce apoptosis in endothelial cells.

**Immunogen:** Synthetic peptide of human TNFSF15

**Applications:** ELISA, WB, IHC

**Recommended Dilutions:** IHC: 30-150;WB: 200-1000;ELISA: 1000-2000

**Host Species:** Rabbit

**Clonality:** Rabbit Polyclonal

**Isotype:** Immunogen-specific rabbit IgG

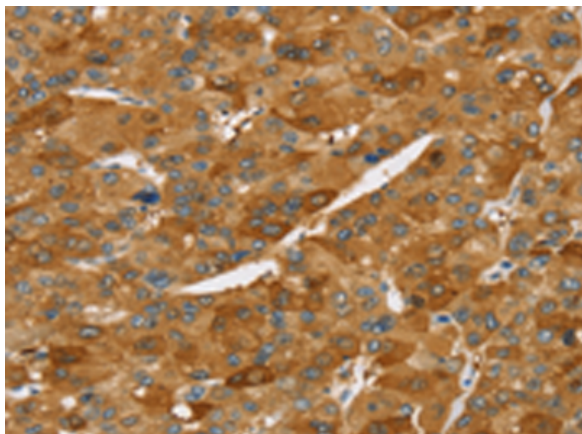
**Purification:** Antigen affinity purification

**Species Reactivity:** Human, Mouse, Rat

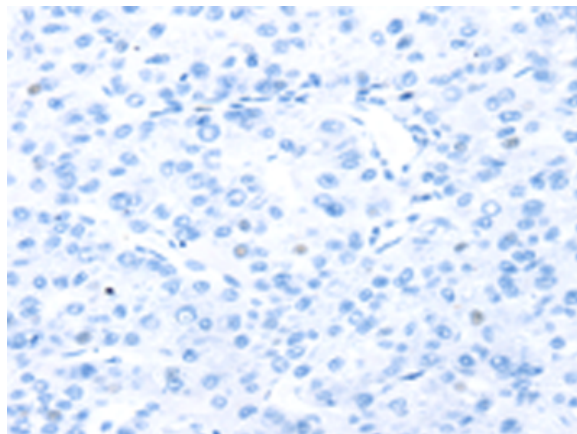
**Constituents:** PBS (without Mg<sup>2+</sup> and Ca<sup>2+</sup>), pH 7.4, 150 mM NaCl, 0.05% Sodium Azide and 40% glycerol

**Research Areas:** Cardiovascular, Immunology

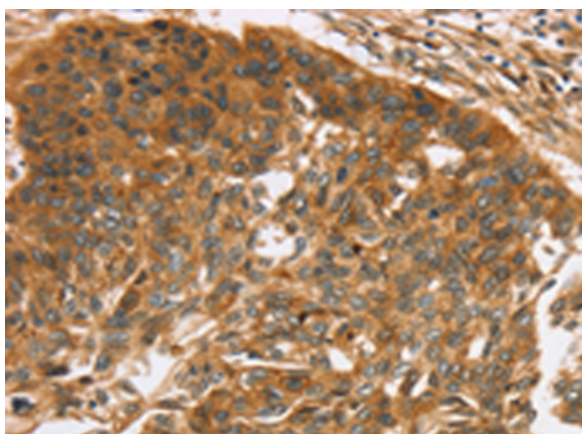
**Storage & Shipping:** Store at -20°C. Avoid repeated freezing and thawing



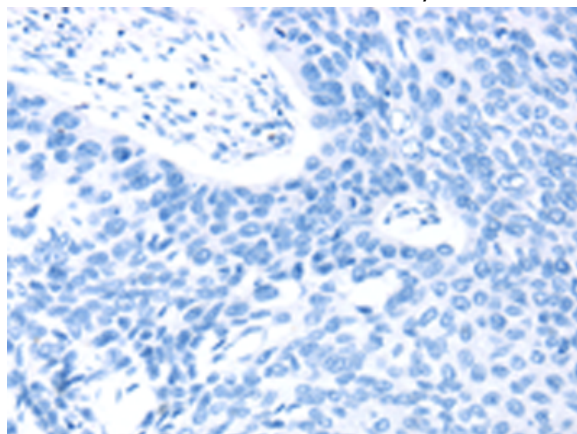
Immunohistochemistry analysis of paraffin embedded Human liver cancer tissue using 221037(TNFSF15 Antibody) at a dilution of 1/40(Cytoplasm and Cell membrane ).



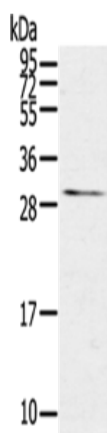
In comparison with the IHC on the left, the same paraffin-embedded Human liver cancer tissue is first treated with the synthetic peptide and then with 221037(Anti-TNFSF15 Antibody) at dilution 1/40.



The image on the left is immunohistochemistry of paraffin-embedded Human esophagus cancer tissue using 221037(Anti-TNFSF15 Antibody) at a dilution of 1/40.



In comparison with the IHC on the left, the same paraffin-embedded Human esophagus cancer tissue is first treated with synthetic peptide and then with D262387(Anti-TNFSF15 Antibody) at dilution 1/40.



Gel: 12%SDS-PAGE, Lysate: 40 µg;  
Lane: Mouse kidney tissue;  
Primary antibody: 221037(TNFSF15 Antibody) at dilution 1/600;  
Secondary antibody: Goat anti rabbit IgG at 1/8000 dilution;  
Exposure time: 3 minutes



# Product Description

Pioneering GTPase and Oncogene Product Development since 2010

---