

## TNFSF4 RABBIT PAB

**Cat.#:** S220008

**Product Name:** Anti-TNFSF4 Rabbit Polyclonal Antibody

**Synonyms:** GP34; CD252; OX4OL; TXGP1; CD134L; OX-40L; TNLG2B

**UNIPROT ID:** P23510 (Gene Accession - NP\_003317 )

**Background:** This gene encodes a cytokine of the tumor necrosis factor (TNF) ligand family. The encoded protein functions in T cell antigen-presenting cell (APC) interactions and mediates adhesion of activated T cells to endothelial cells. Polymorphisms in this gene have been associated with Sjogren's syndrome and systemic lupus erythematosus. Alternative splicing results in multiple transcript variants.

**Immunogen:** Synthetic peptide of human TNFSF4

**Applications:** ELISA, IHC

**Recommended Dilutions:** IHC: 50-100; ELISA: 5000-10000

**Host Species:** Rabbit

**Clonality:** Rabbit Polyclonal

**Isotype:** Immunogen-specific rabbit IgG

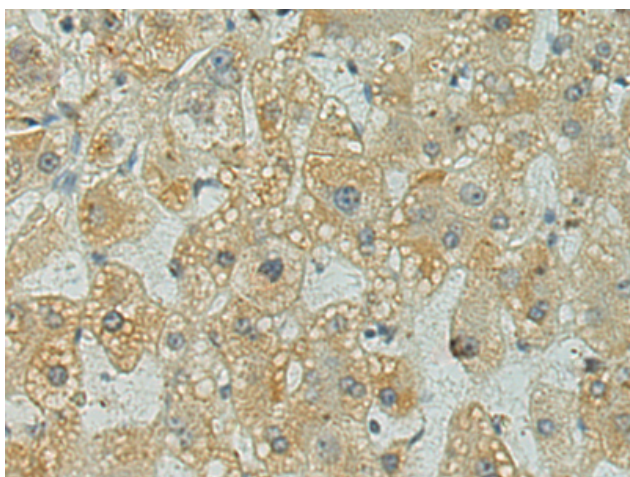
**Purification:** Antigen affinity purification

**Species Reactivity:** Human

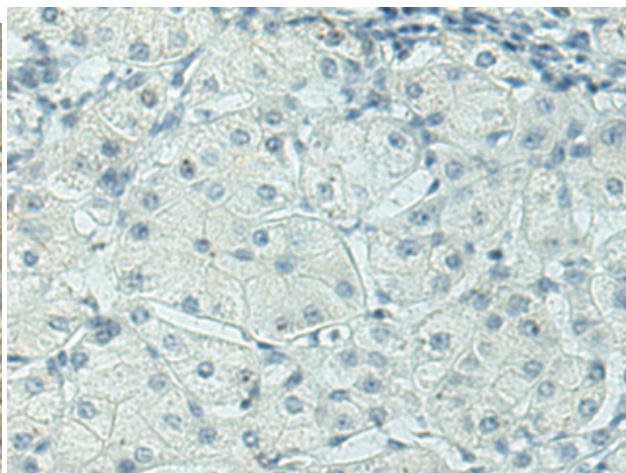
**Constituents:** PBS (without Mg<sup>2+</sup> and Ca<sup>2+</sup>), pH 7.4, 150 mM NaCl, 0.05% Sodium Azide and 40% glycerol

**Research Areas:** Immunology, Stem Cells

**Storage & Shipping:** Store at -20°C. Avoid repeated freezing and thawing



Immunohistochemistry analysis of paraffin embedded Human liver cancer tissue using 220008(TNFSF4 Antibody) at a dilution of 1/40(Cytoplasm and Cell membrane).



In comparison with the IHC on the left, the same paraffin-embedded Human liver cancer tissue is first treated with the synthetic peptide and then with 220008(Anti-TNFSF4 Antibody) at dilution 1/40.