

## TOLL-LIKE RECEPTOR 2 RABBIT MAB

**Cat.#:** N261765

**Product Name:** Anti-Toll-Like Receptor 2 Rabbit Monoclonal Antibody

**Synonyms:** Toll-Like Receptor 2; TLR2; CD282; TIL4; Toll-like receptor 2; Toll/interleukin-1 receptor-like protein 4

**UNIPROT ID:** Q9QUN7

**Background:** Cooperates with LY96 to mediate the innate immune response to bacterial lipoproteins and other microbial cell wall components. Cooperates with TLR1 or TLR6 to mediate the innate immune response to bacterial lipoproteins or lipopeptides. Acts via MYD88 and TRAF6, leading to NF-kappa-B activation, cytokine secretion and the inflammatory response.

**Immunogen:** Recombinant protein of mouse TLR2

**Applications:** WB,IHC-F,IHC-P,ICC/IF

**Recommended Dilutions:** WB: 1/500-1/1000 IHC: 1/50-1/100 IF: 1/50-1/200

**Host Species:** Rabbit

**Clonality:** Rabbit Monoclonal

**Clone ID:** R06-8B6

**MW:** Calculated MW: 89 kDa; Observed MW: 89 kDa

**Isotype:** IgG

**Purification:** Affinity Purified

**Species Reactivity:** Mouse

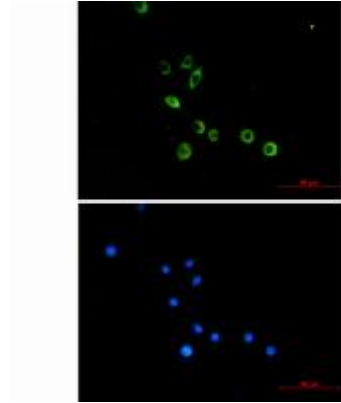
**Conjugation:** Unconjugated

**Modification:** Unmodified

**Constituents:** PBS (without Mg<sup>2+</sup> and Ca<sup>2+</sup>), pH 7.3 containing 50% glycerol, 0.5% BSA and 0.02% sodium azide

**Research Areas:** Immunology

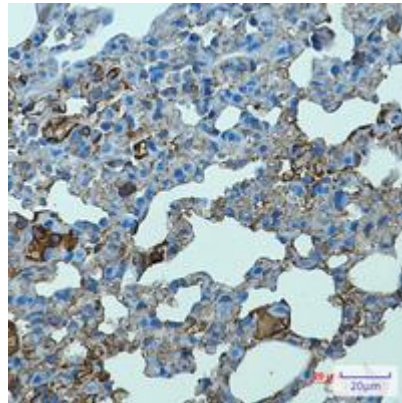
**Storage & Shipping:** Store at -20°C. Avoid repeated freezing and thawing



Immunocytochemistry analysis of TLR2 (green) in Raw264.7 using TLR2 antibody, and DAPI (blue)



Western blot analysis of TLR2 in Raw264.7 lysates using TLR2 antibody.



Immunohistochemistry analysis of paraffin-embedded mouse lung using Toll Like Receptor 2 antibody. High-pressure and temperature Sodium Citrate pH 6.0 was used for antigen retrieval.