

TOLL-LIKE RECEPTOR 4 RABBIT PAB

Cat.#: N225529

Product Name: Anti-Toll-Like Receptor 4 Rabbit pAb

Synonyms: TLR4; Toll-like receptor 4; hToll; CD antigen CD284

UNIPROT ID: O00206

Background: Cooperates with LY96 and CD14 to mediate the innate immune response to bacterial lipopolysaccharide (LPS).

Immunogen: Recombinant Protein of TLR4

Applications: IHC-P

Recommended Dilutions: IHC: 1/50-1/100

Host Species: Rabbit

Clonality: Rabbit Polyclonal

Clone ID: -

MW: -

Isotype: IgG

Purification: Affinity Purified

Species Reactivity: Human, Mouse, Rat

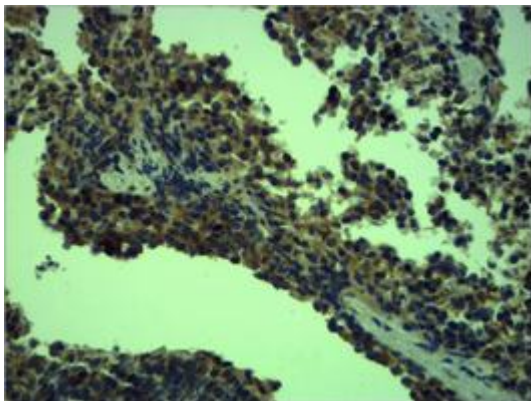
Conjugation: Unconjugated

Modification: Unmodified

Constituents: PBS (without Mg²⁺ and Ca²⁺), pH 7.3 containing 50% glycerol, 0.5% BSA and 0.02% sodium azide

Research Areas: Immunology

Storage & Shipping: Store at -20°C. Avoid repeated freezing and thawing



Immunohistochemistry analysis of paraffin-embedded mouse Spleen Tissue using Toll-Like Receptor 4 antibody. High-pressure and temperature Sodium Citrate pH 6.0 was used for antigen retrieval.



Product Description

Pioneering GTPase and Oncogene Product Development since 2010
