

TOPOISOMERASE I RABBIT PAB

Cat.#: N225698

Product Name: Anti-Topoisomerase I Rabbit pAb

Synonyms: TOP1; DNA topoisomerase I; DNA topoisomerase I

UNIPROT ID: P11387

Background: Releases the supercoiling and torsional tension of DNA introduced during the DNA replication and transcription by transiently cleaving and rejoining one strand of the DNA duplex. Introduces a single-strand break via transesterification at a target site in duplex DNA. The scissile phosphodiester is attacked by the catalytic tyrosine of the enzyme, resulting in the formation of a DNA-(3'-phosphotyrosyl)-enzyme intermediate and the expulsion of a 5'-OH DNA strand.

Immunogen: A synthesized peptide derived from human TOP1

Applications: WB,IHC-P,ICC/IF,FC

Recommended Dilutions: WB: 1/500-1/1000 IHC: 1/50-1/100 IF: 1/50-1/200 FC: 1/50-1/100

Host Species: Rabbit

Clonality: Rabbit Polyclonal

Clone ID: -

MW: Calculated MW: 91 kDa; Observed MW: 91 kDa

Isotype: IgG

Purification: Affinity Chromatography

Species Reactivity: Human,Mouse

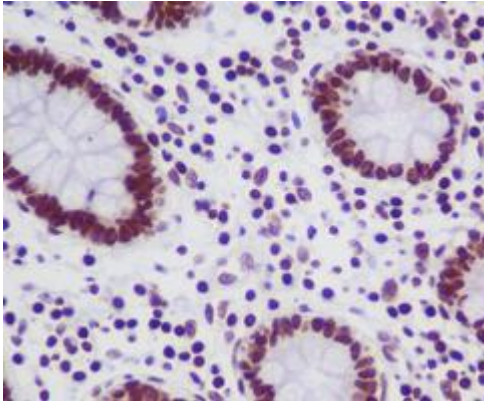
Conjugation: Unconjugated

Modification: Unmodified

Constituents: PBS (without Mg²⁺ and Ca²⁺), pH 7.3 containing 50% glycerol, 0.5% BSA and 0.02% sodium azide

Research Areas: Epigenetics and Nuclear Signaling

Storage & Shipping: Store at -20°C. Avoid repeated freezing and thawing



Immunohistochemistry analysis of paraffin-embedded Human colon using TOP1 antibody. High-pressure and temperature Sodium Citrate pH 6.0 was used for antigen retrieval.



Western blot analysis of TOP1 in Jurkat lysates using Topoisomerase I antibody.