

## TP53AIP1 RABBIT PAB

**Cat.#:** S220776

**Product Name:** Anti-TP53AIP1 Rabbit Polyclonal Antibody

**Synonyms:** P53AIP1

**UNIPROT ID:** Q9HCN2 (Gene Accession - NP\_071395 )

**Background:** This gene is specifically expressed in the thymus, and encodes a protein that is localized to the mitochondrion. The expression of this gene is inducible by p53, and it is thought to play an important role in mediating p53-dependent apoptosis. Alternatively spliced transcript variants encoding different isoforms have been described for this gene.

**Immunogen:** Synthetic peptide of human TP53AIP1

**Applications:** ELISA, IHC

**Recommended Dilutions:** IHC: 50-200; ELISA: 2000-5000

**Host Species:** Rabbit

**Clonality:** Rabbit Polyclonal

**Isotype:** Immunogen-specific rabbit IgG

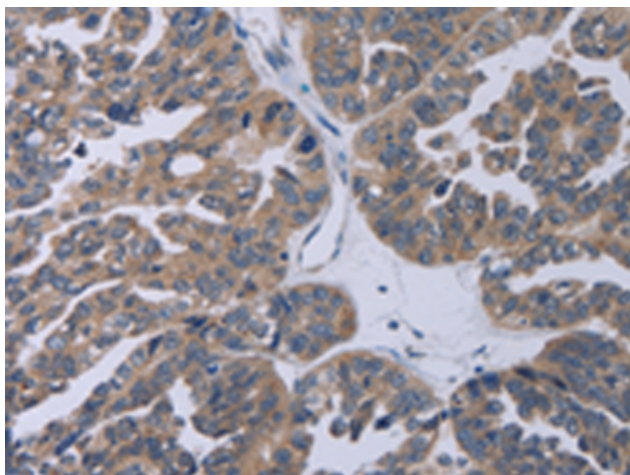
**Purification:** Antigen affinity purification

**Species Reactivity:** Human

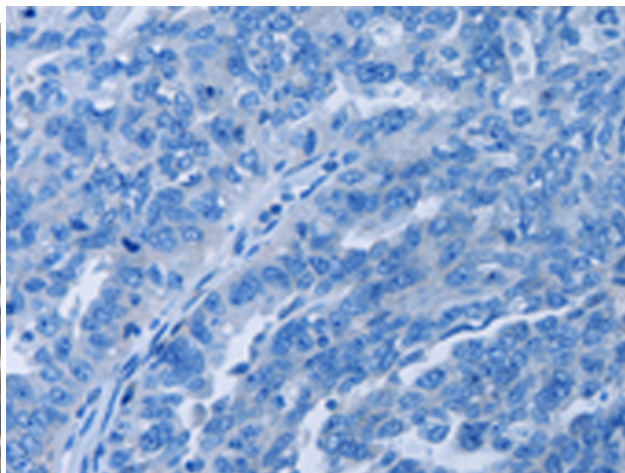
**Constituents:** PBS (without Mg<sup>2+</sup> and Ca<sup>2+</sup>), pH 7.4, 150 mM NaCl, 0.05% Sodium Azide and 40% glycerol

**Research Areas:** Cancer

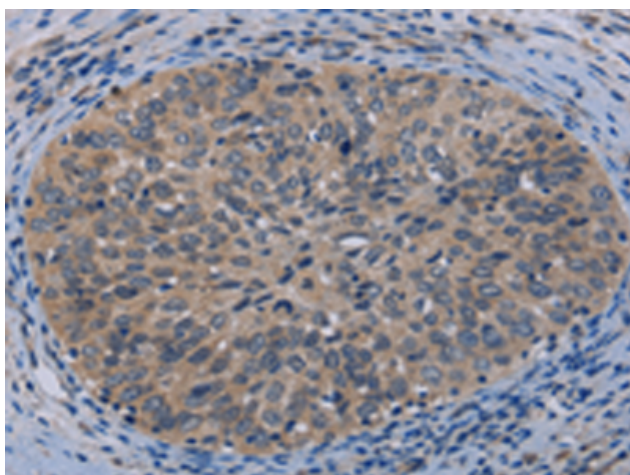
**Storage & Shipping:** Store at -20°C. Avoid repeated freezing and thawing



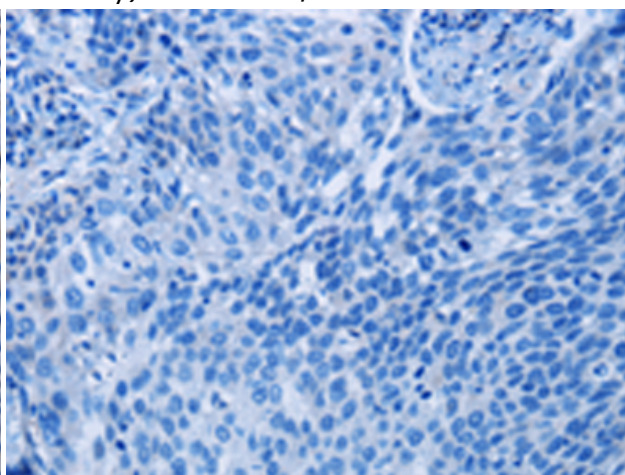
Immunohistochemistry analysis of paraffin embedded Human ovarian cancer tissue using 220776 (TP53AIP1 Antibody) at a dilution of 1/50 (Cytoplasm).



In comparison with the IHC on the left, the same paraffin-embedded Human ovarian cancer tissue is first treated with the synthetic peptide and then with 220776 (Anti-TP53AIP1 Antibody) at dilution 1/50.



The image on the left is immunohistochemistry of paraffin-embedded Human cervical cancer tissue using 220776 (Anti-TP53AIP1 Antibody) at a dilution of 1/50.



In comparison with the IHC on the left, the same paraffin-embedded Human cervical cancer tissue is first treated with synthetic peptide and then with D262005 (Anti-TP53AIP1 Antibody) at dilution 1/50.