

TP53BP2 RABBIT PAB

Cat.#: S217191

Product Name: Anti-TP53BP2 Rabbit Polyclonal Antibody

Synonyms: BBP; 53BP2; ASPP2; P53BP2; PPP1R13A

UNIPROT ID: Q13625 (Gene Accession - BC040247)

Background: This gene encodes a member of the ASPP (apoptosis-stimulating protein of p53) family of p53 interacting proteins. The protein contains four ankyrin repeats and an SH3 domain involved in protein-protein interactions. It is localized to the perinuclear region of the cytoplasm, and regulates apoptosis and cell growth through interactions with other regulatory molecules including members of the p53 family. Multiple transcript variants encoding different isoforms have been found for this gene.

Immunogen: Fusion protein of human TP53BP2

Applications: ELISA, WB, IHC

Recommended Dilutions: IHC: 50-200;WB: 500-2000;ELISA: 2000-5000

Host Species: Rabbit

Clonality: Rabbit Polyclonal

Isotype: Immunogen-specific rabbit IgG

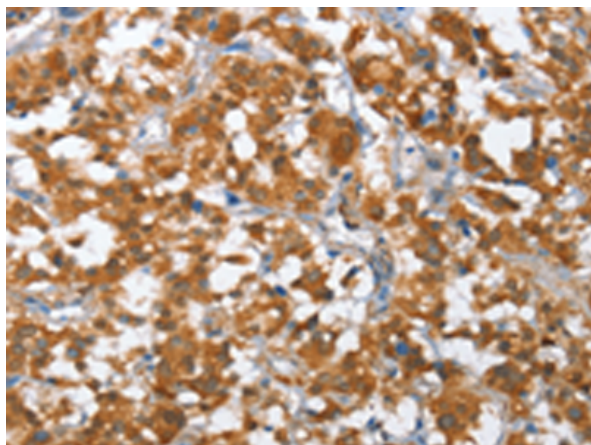
Purification: Antigen affinity purification

Species Reactivity: Human, Mouse

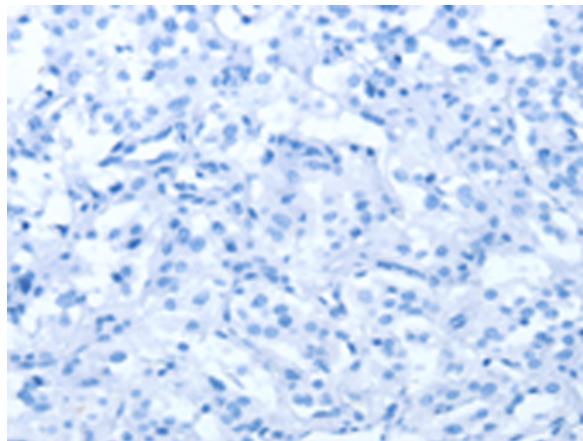
Constituents: PBS (without Mg²⁺ and Ca²⁺), pH 7.4, 150 mM NaCl, 0.05% Sodium Azide and 40% glycerol

Research Areas: Cancer

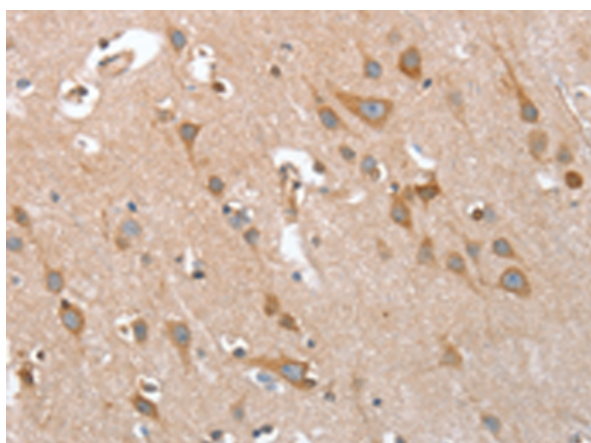
Storage & Shipping: Store at -20°C. Avoid repeated freezing and thawing



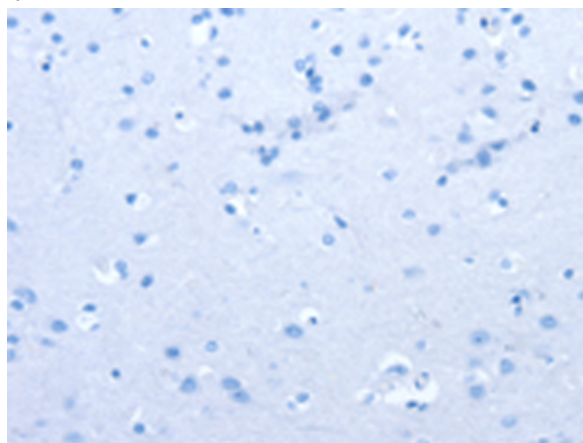
Immunohistochemistry analysis of paraffin embedded Human thyroid cancer tissue using 217191(TP53BP2 Antibody) at a dilution of 1/35(Cytoplasm).



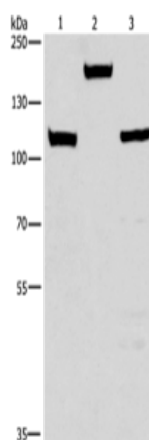
In comparison with the IHC on the left, the same paraffin-embedded Human thyroid cancer tissue is first treated with the fusion protein and then with 217191(Anti-TP53BP2 Antibody) at dilution 1/35.



The image on the left is immunohistochemistry of paraffin-embedded Human brain tissue using 217191(Anti-TP53BP2 Antibody) at a dilution of 1/35.



In comparison with the IHC on the left, the same paraffin-embedded Human brain tissue is first treated with fusion protein and then with D221955(Anti-TP53BP2 Antibody) at dilution 1/35.



Gel: 10%SDS-PAGE, Lysate: 40 µg;
Lane 1-3: Mouse kidney tissue, 293T cells, 231 cells;
Primary antibody: 217191(TP53BP2 Antibody) at dilution 1/375;
Secondary antibody: Goat anti rabbit IgG at 1/8000 dilution;
Exposure time: 30 seconds



Product Description

Pioneering GTPase and Oncogene Product Development since 2010
