

TP53INP2 RABBIT PAB

Cat.#: N225079

Product Name: Anti-TP53INP2 Rabbit pAb

Synonyms: TP53INP2; C20orf110; DOR; PINH; Tumor protein p53-inducible nuclear protein 2; Diabetes and obesity-regulated gene; p53-inducible protein U; PIG-U

UNIPROT ID: Q8IXH6

Background: Dual regulator of transcription and autophagy.

Immunogen: The antiserum was produced against synthesized peptide derived from the C-terminal region of human TP53INP2. AA range:161-210

Applications: WB,IHC-P,ELISA

Recommended Dilutions: WB: 1/500-1/1000 IHC: 1/50-1/100 ELISA: 1/10000

Host Species: Rabbit

Clonality: Rabbit Polyclonal

Clone ID: -

MW: Calculated MW: 24 kDa; Observed MW: 24 kDa

Isotype: IgG

Purification: Affinity Purified

Species Reactivity: Human

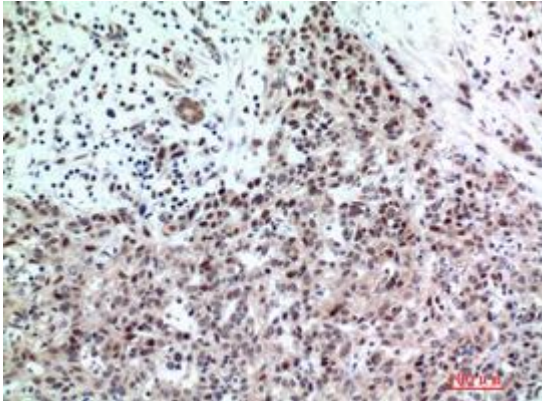
Conjugation: Unconjugated

Modification: Unmodified

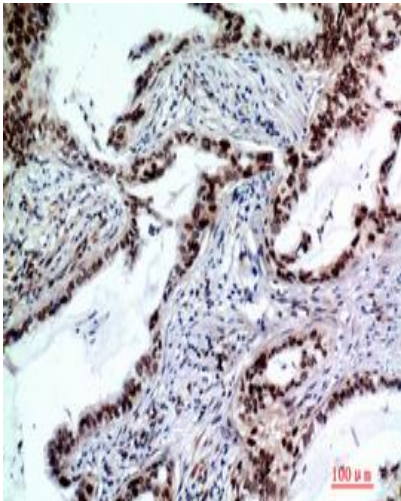
Constituents: PBS (without Mg²⁺ and Ca²⁺), pH 7.3 containing 50% glycerol, 0.5% BSA and 0.02% sodium azide

Research Areas: Cell Biology

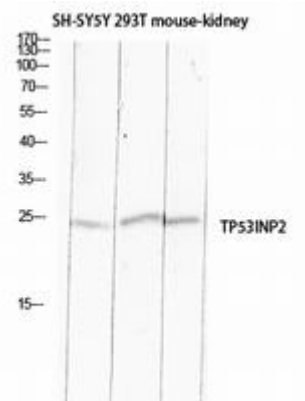
Storage & Shipping: Store at -20°C. Avoid repeated freezing and thawing



Immunohistochemistry analysis of paraffin-embedded Human breast cancer using TP53INP2 antibody. High-pressure and temperature Sodium Citrate pH 6.0 was used for antigen retrieval.



Immunohistochemistry analysis of paraffin-embedded Human lung cancer using TP53INP2 antibody. High-pressure and temperature Sodium Citrate pH 6.0 was used for antigen retrieval.



Western blot analysis of TP53INP2 in SH-SY5Y, 293T, mouse kidney lysates using TP53INP2 antibody.