

TPD52L2 RABBIT PAB

Cat.#: S221042

Product Name: Anti-TPD52L2 Rabbit Polyclonal Antibody

Synonyms: D54; TPD54

UNIPROT ID: O43399 (Gene Accession - NP_003279)

Background: This gene encodes a member of the tumor protein D52-like family. These proteins are characterized by an N-terminal coiled-coil motif that is used to form homo- and heteromeric complexes with other tumor protein D52-like proteins. Expression of this gene may be a marker for breast cancer and acute lymphoblastic leukemia. Alternatively spliced transcript variants encoding multiple isoforms have been observed for this gene, and a pseudogene of this gene is located on the long arm of chromosome 12.

Immunogen: Synthetic peptide of human TPD52L2

Applications: ELISA, WB, IHC

Recommended Dilutions: IHC: 25-100;WB: 500-2000;ELISA: 2000-5000

Host Species: Rabbit

Clonality: Rabbit Polyclonal

Isotype: Immunogen-specific rabbit IgG

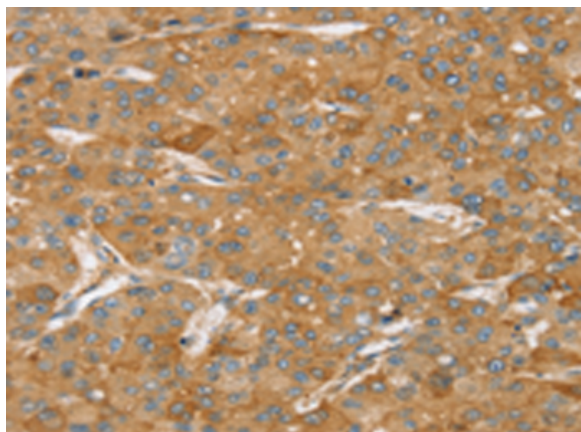
Purification: Antigen affinity purification

Species Reactivity: Human, Mouse

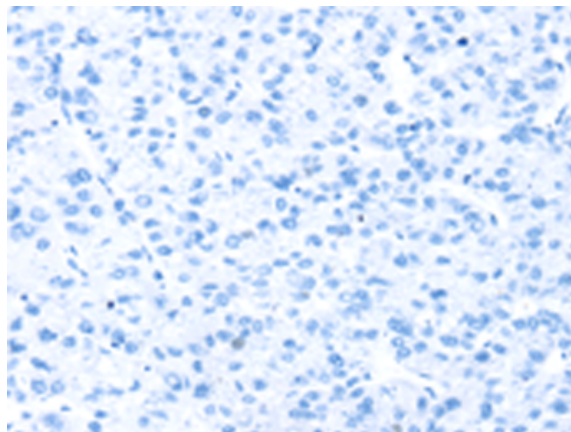
Constituents: PBS (without Mg²⁺ and Ca²⁺), pH 7.4, 150 mM NaCl, 0.05% Sodium Azide and 40% glycerol

Research Areas: Cancer

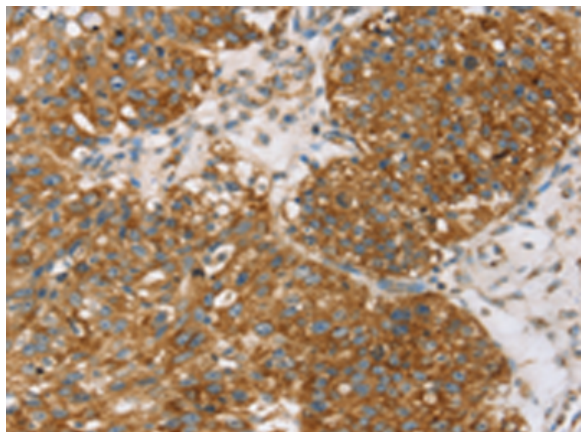
Storage & Shipping: Store at -20°C. Avoid repeated freezing and thawing



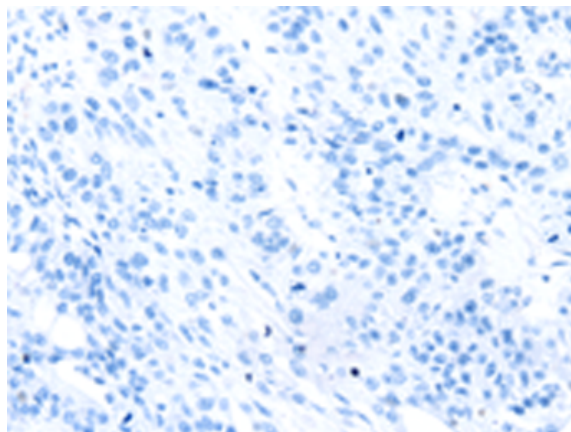
Immunohistochemistry analysis of paraffin embedded Human liver cancer tissue using 221042(TPD52L2 Antibody) at a dilution of 1/35(Cytoplasm).



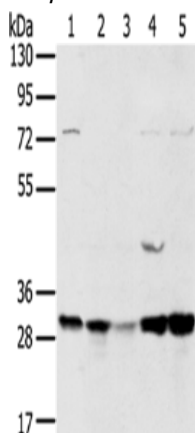
In comparison with the IHC on the left, the same paraffin-embedded Human liver cancer tissue is first treated with the synthetic peptide and then with 221042(Anti-TPD52L2 Antibody) at dilution 1/35.



The image on the left is immunohistochemistry of paraffin-embedded Human breast cancer tissue using 221042(Anti-TPD52L2 Antibody) at a dilution of 1/35.



In comparison with the IHC on the left, the same paraffin-embedded Human breast cancer tissue is first treated with synthetic peptide and then with D262399(Anti-TPD52L2 Antibody) at dilution 1/35.



Gel: 8%SDS-PAGE, Lysate: 40 µg;
 Lane 1-5: 293T cells, MCF7 cells, mouse brain tissue,
 K562 cells, mouse bladder tissue;
 Primary antibody: 221042(TPD52L2 Antibody) at
 dilution 1/400;
 Secondary antibody: Goat anti rabbit IgG at 1/8000
 dilution;
 Exposure time: 20 seconds



Product Description

Pioneering GTPase and Oncogene Product Development since 2010
