

TPM2 RABBIT PAB

Cat.#: S220238

Product Name: Anti-TPM2 Rabbit Polyclonal Antibody

Synonyms: DA1; DA2B; NEM4; TMSB; AMCD1

UNIPROT ID: P07951 (Gene Accession - NP_003280)

Background: This gene encodes beta-tropomyosin, a member of the actin filament binding protein family, and mainly expressed in slow, type 1 muscle fibers. Mutations in this gene can alter the expression of other sarcomeric tropomyosin proteins, and cause cap disease, nemaline myopathy and distal arthrogyrosis syndromes. Alternatively spliced transcript variants encoding different isoforms have been found for this gene.

Immunogen: Synthetic peptide of human TPM2

Applications: ELISA, WB, IHC

Recommended Dilutions: IHC: 25-100;WB: 1000-5000;ELISA: 2000-10000

Host Species: Rabbit

Clonality: Rabbit Polyclonal

Isotype: Immunogen-specific rabbit IgG

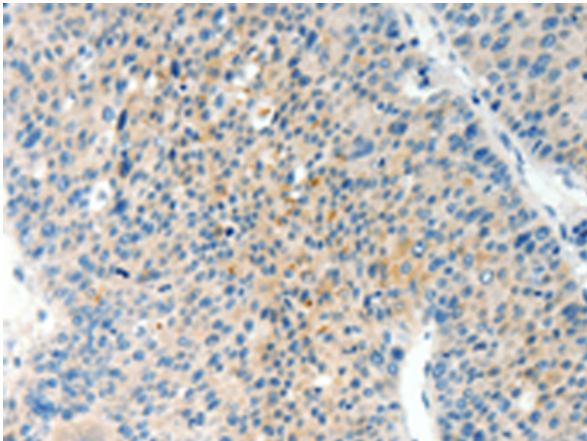
Purification: Antigen affinity purification

Species Reactivity: Human, Mouse, Rat

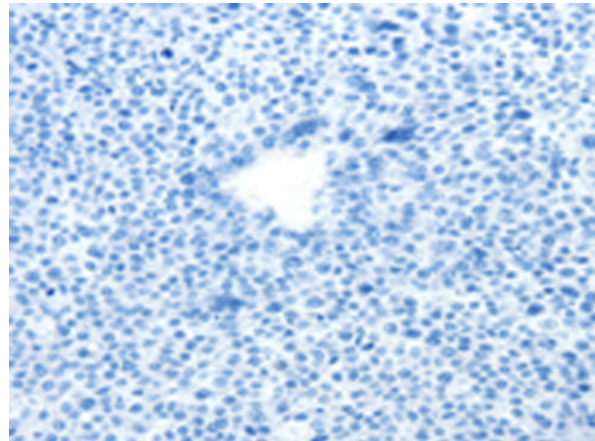
Constituents: PBS (without Mg²⁺ and Ca²⁺), pH 7.4, 150 mM NaCl, 0.05% Sodium Azide and 40% glycerol

Research Areas: Signal Transduction

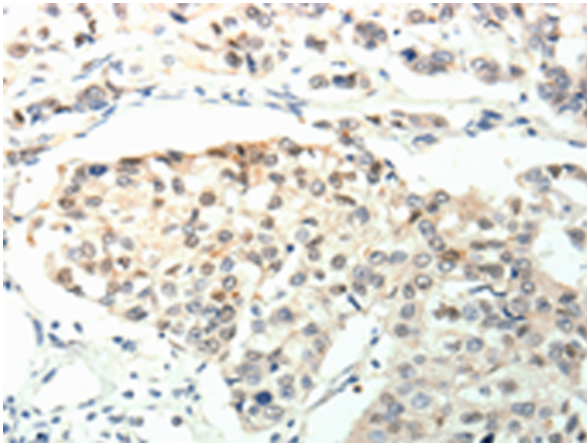
Storage & Shipping: Store at -20°C. Avoid repeated freezing and thawing



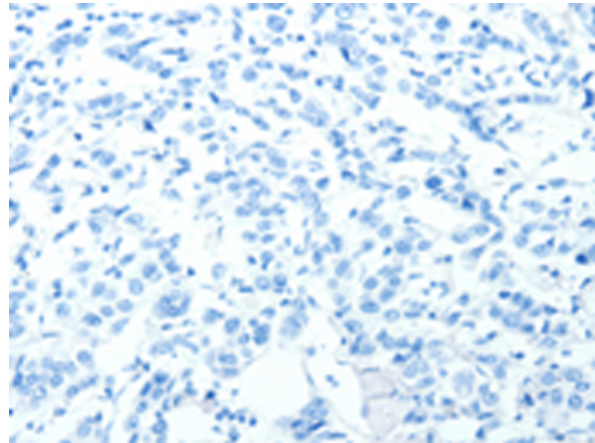
Immunohistochemistry analysis of paraffin embedded Human liver cancer tissue using 220238(TPM2 Antibody) at a dilution of 1/60(Cytoplasm).



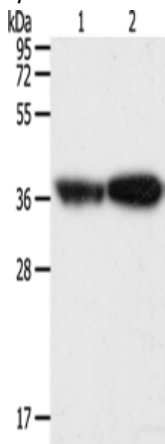
In comparison with the IHC on the left, the same paraffin-embedded Human liver cancer tissue is first treated with the synthetic peptide and then with 220238(Anti-TPM2 Antibody) at dilution 1/60.



The image on the left is immunohistochemistry of paraffin-embedded Human breast cancer tissue using 220238(Anti-TPM2 Antibody) at a dilution of 1/60.



In comparison with the IHC on the left, the same paraffin-embedded Human breast cancer tissue is first treated with synthetic peptide and then with D261181(Anti-TPM2 Antibody) at dilution 1/60.



Gel: 12%SDS-PAGE, Lysate: 40 µg;
 Lane 1-2: Human leiomyosarcoma tissue, mouse testis tissue;
 Primary antibody: 220238(TPM2 Antibody) at dilution 1/1000;
 Secondary antibody: Goat anti rabbit IgG at 1/8000 dilution;
 Exposure time: 1 second



Product Description

Pioneering GTPase and Oncogene Product Development since 2010
