

TPM4 RABBIT PAB

Cat.#: S218212

Product Name: Anti-TPM4 Rabbit Polyclonal Antibody

Synonyms: HEL-S-108

UNIPROT ID: P67936 (Gene Accession - BC037576)

Background: This gene encodes a member of the tropomyosin family of actin-binding proteins involved in the contractile system of striated and smooth muscles and the cytoskeleton of non-muscle cells. Tropomyosins are dimers of coiled-coil proteins that polymerize end-to-end along the major groove in most actin filaments. They provide stability to the filaments and regulate access of other actin-binding proteins. In muscle cells, they regulate muscle contraction by controlling the binding of myosin heads to the actin filament. Multiple transcript variants encoding different isoforms have been found for this gene. [provided by RefSeq, Nov 2009]

Immunogen: Fusion protein of human TPM4

Applications: ELISA, IHC

Recommended Dilutions: IHC: 100-200; ELISA: 5000-10000

Host Species: Rabbit

Clonality: Rabbit Polyclonal

Isotype: Immunogen-specific rabbit IgG

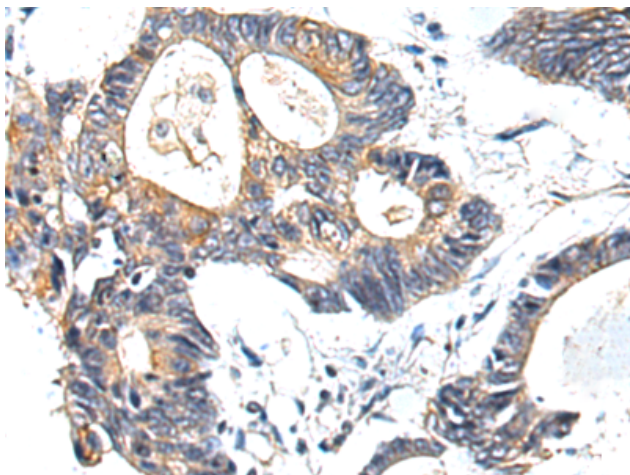
Purification: Antigen affinity purification

Species Reactivity: Human, Mouse, Rat

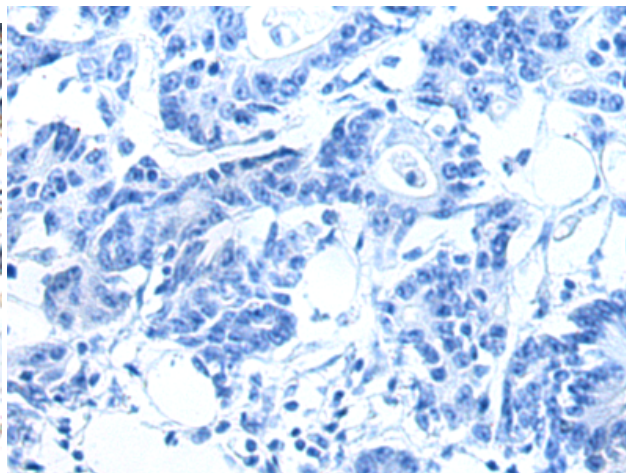
Constituents: PBS (without Mg²⁺ and Ca²⁺), pH 7.4, 150 mM NaCl, 0.05% Sodium Azide and 40% glycerol

Research Areas: Signal Transduction

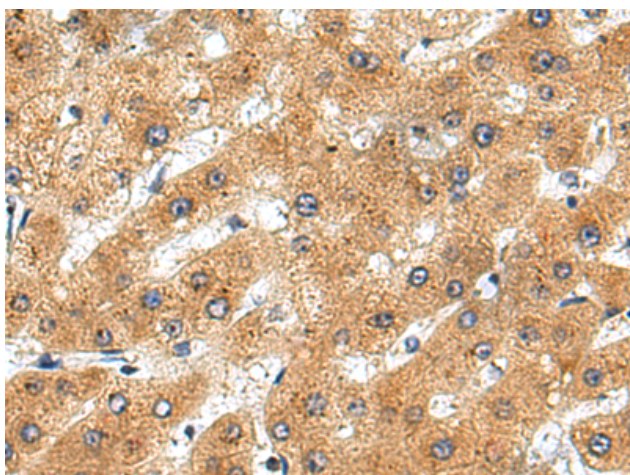
Storage & Shipping: Store at -20°C. Avoid repeated freezing and thawing



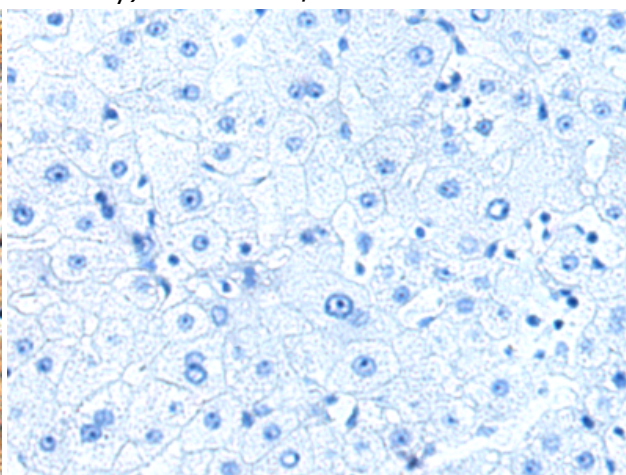
Immunohistochemistry analysis of paraffin embedded Human colorectal cancer tissue using 218212(TPM4 Antibody) at a dilution of 1/110(Cytoplasm).



In comparison with the IHC on the left, the same paraffin-embedded Human colorectal cancer tissue is first treated with the fusion protein and then with 218212(Anti-TPM4 Antibody) at dilution 1/110.



The image on the left is immunohistochemistry of paraffin-embedded Human liver cancer tissue using 218212(Anti-TPM4 Antibody) at a dilution of 1/110.



In comparison with the IHC on the left, the same paraffin-embedded Human liver cancer tissue is first treated with fusion protein and then with D223959(Anti-TPM4 Antibody) at dilution 1/110.