

TPP1 RABBIT MAB

Cat.#: N263011

Product Name: Anti-TPP1 Rabbit Monoclonal Antibody

Synonyms: CLN2; GIG1; LPIC; SCAR7; TPP-1

UNIPROT ID: O14773

Background: Lysosomal serine protease with tripeptidyl-peptidase I activity. May act as a non-specific lysosomal peptidase which generates tripeptides from the breakdown products produced by lysosomal proteinases. Requires substrates with an unsubstituted N-terminus .

Immunogen: Recombinant protein of human TPP1

Applications: WB,IHC-P

Recommended Dilutions: WB: 1/500-1/1000 IHC: 1/50-1/100

Host Species: Rabbit

Clonality: Rabbit Monoclonal

Clone ID: R09-2G9

MW: Calculated MW: 61 kDa; Observed MW: 61,48 kDa

Isotype: IgG

Purification: Affinity Purified

Species Reactivity: Human

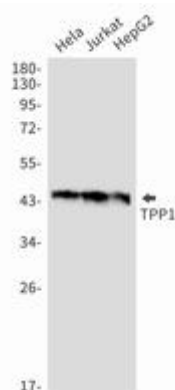
Conjugation: Unconjugated

Modification: Unmodified

Constituents: PBS (without Mg²⁺ and Ca²⁺), pH 7.3 containing 50% glycerol, 0.5% BSA and 0.02% sodium azide

Research Areas: Neuroscience

Storage & Shipping: Store at -20°C. Avoid repeated freezing and thawing



Western blot analysis of TPP1 in Hela, Jurkat, HepG2 lysates using TPP1 antibody.



Product Description

Pioneering GTPase and Oncogene Product Development since 2010
