

TPT1 RABBIT PAB

Cat.#: S217887

Product Name: Anti-TPT1 Rabbit Polyclonal Antibody

Synonyms: HRF; p02; p23; TCTP

UNIPROT ID: P13693 (Gene Accession - BC003352)

Background: Involved in calcium binding and microtubule stabilization.

Immunogen: Full length fusion protein

Applications: ELISA, WB, IHC

Recommended Dilutions: IHC: 45-300;WB: 1000-5000;ELISA: 5000-10000

Host Species: Rabbit

Clonality: Rabbit Polyclonal

Isotype: Immunogen-specific rabbit IgG

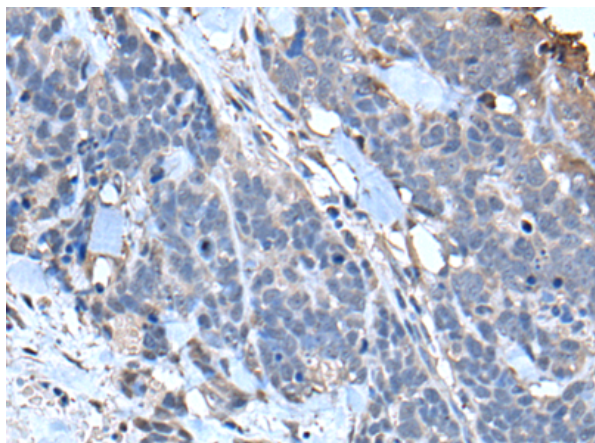
Purification: Antigen affinity purification

Species Reactivity: Human, Mouse, Rat

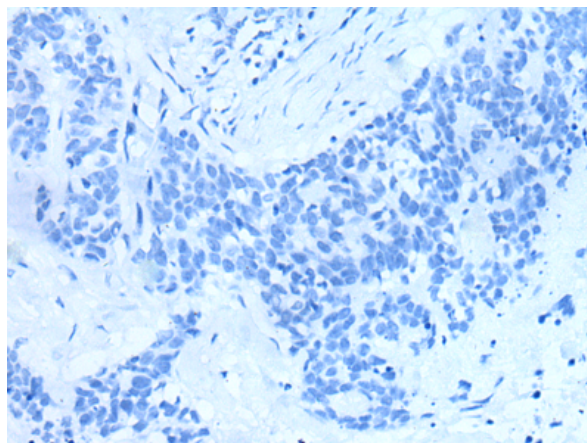
Constituents: PBS (without Mg²⁺ and Ca²⁺), pH 7.4, 150 mM NaCl, 0.05% Sodium Azide and 40% glycerol

Research Areas: Immunology

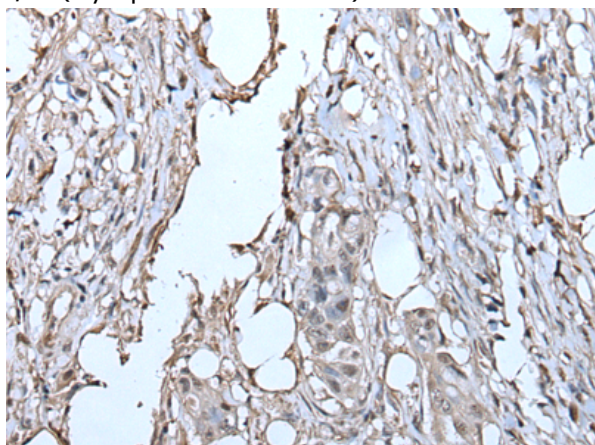
Storage & Shipping: Store at -20°C. Avoid repeated freezing and thawing



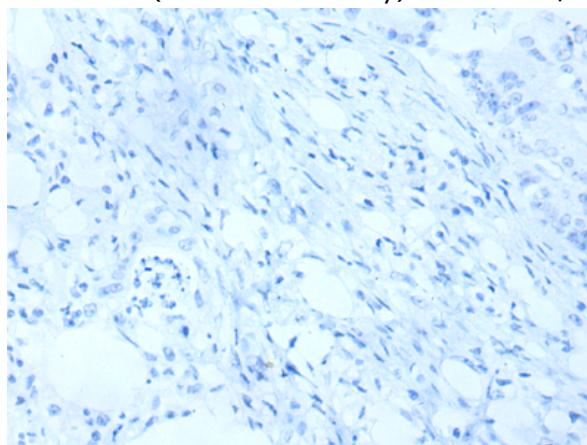
Immunohistochemistry analysis of paraffin embedded Human thyroid cancer tissue using 217887(TPT1 Antibody) at a dilution of 1/85(Cytoplasm or Nucleus).



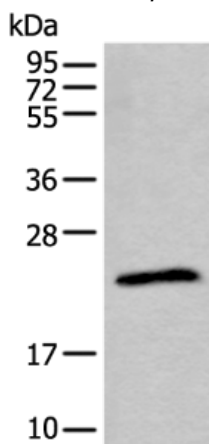
In comparison with the IHC on the left, the same paraffin-embedded Human thyroid cancer tissue is first treated with the fusion protein and then with 217887(Anti-TPT1 Antibody) at dilution 1/85.



The image on the left is immunohistochemistry of paraffin-embedded Human colorectal cancer tissue using 217887(Anti-TPT1 Antibody) at a dilution of 1/85.



In comparison with the IHC on the left, the same paraffin-embedded Human colorectal cancer tissue is first treated with fusion protein and then with D223303(Anti-TPT1 Antibody) at dilution 1/85.



Gel: 12%SDS-PAGE, Lysate: 40 µg;
Lane: Jurkat cell lysate;
Primary antibody: 217887(TPT1 Antibody) at dilution 1/800;
Secondary antibody: Goat anti rabbit IgG at 1/8000 dilution;
Exposure time: 20 seconds



Product Description

Pioneering GTPase and Oncogene Product Development since 2010
