

## TPX2 RABBIT MAB

**Cat.#:** N263585

**Product Name:** Anti-TPX2 Rabbit Monoclonal Antibody

**Synonyms:** DIL2; p100; DIL-2; HCTP4; FLS353; HCA519; REPP86; C20orf1; C20orf2; GD:C20orf1

**UNIPROT ID:** Q9ULW0

**Background:** Spindle assembly factor. Required for normal assembly of mitotic spindles. Required for normal assembly of microtubules during apoptosis. Required for chromatin and/or kinetochore dependent microtubule nucleation. Mediates AURKA localization to spindle microtubules. Activates AURKA by promoting its autophosphorylation at 'Thr-288' and protects this residue against dephosphorylation.

**Immunogen:** Recombinant protein of human TPX2

**Applications:** WB, ICC/IF

**Recommended Dilutions:** WB: 1/500-1/1000 IF: 1/50-1/200

**Host Species:** Rabbit

**Clonality:** Rabbit Monoclonal

**Clone ID:** R05-1B5

**MW:** Calculated MW: 86 kDa; Observed MW: 100 kDa

**Isotype:** IgG

**Purification:** Affinity Purified

**Species Reactivity:** Human

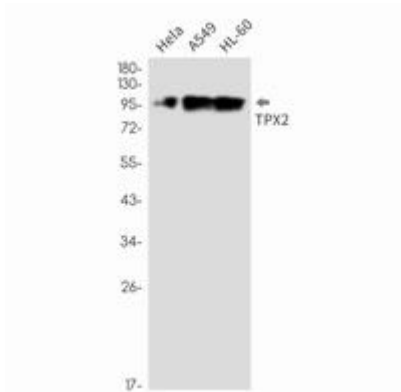
**Conjugation:** Unconjugated

**Modification:** Unmodified

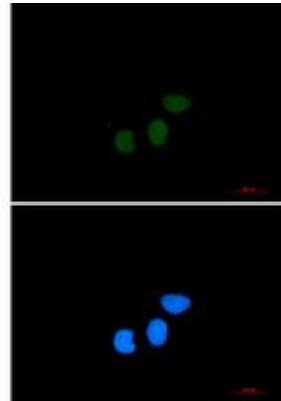
**Constituents:** PBS (without Mg<sup>2+</sup> and Ca<sup>2+</sup>), pH 7.3 containing 50% glycerol, 0.5% BSA and 0.02% sodium azide

**Research Areas:** Cell Biology

**Storage & Shipping:** Store at -20°C. Avoid repeated freezing and thawing



Western blot analysis of TPX2 in HeLa, A549, HL-60 lysates using TPX2 antibody.



Immunocytochemistry analysis of TPX2 (green) in HeLa using TPX2 antibody, and DAPI (blue).