

## TRAF3IP3 RABBIT PAB

**Cat.#:** S216849

**Product Name:** Anti-TRAF3IP3 Rabbit Polyclonal Antibody

**Synonyms:** T3JAM; DJ434O14.3

**UNIPROT ID:** Q9Y228 (Gene Accession - BC130417 )

**Background:** The gene encodes a protein that mediates cell growth by modulating the c-Jun N-terminal kinase signal transduction pathway. The encoded protein may also interact with a large multiprotein assembly containing the phosphatase 2A catalytic subunit.

**Immunogen:** Fusion protein of human TRAF3IP3

**Applications:** ELISA, IHC

**Recommended Dilutions:** IHC: 25-100; ELISA: 2000-5000

**Host Species:** Rabbit

**Clonality:** Rabbit Polyclonal

**Isotype:** Immunogen-specific rabbit IgG

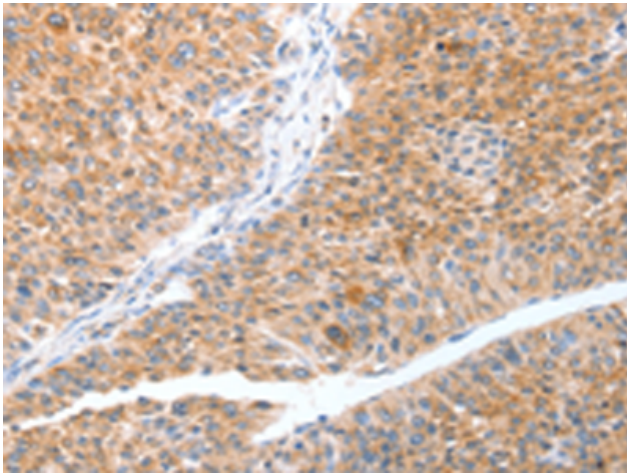
**Purification:** Antigen affinity purification

**Species Reactivity:** Human, Mouse

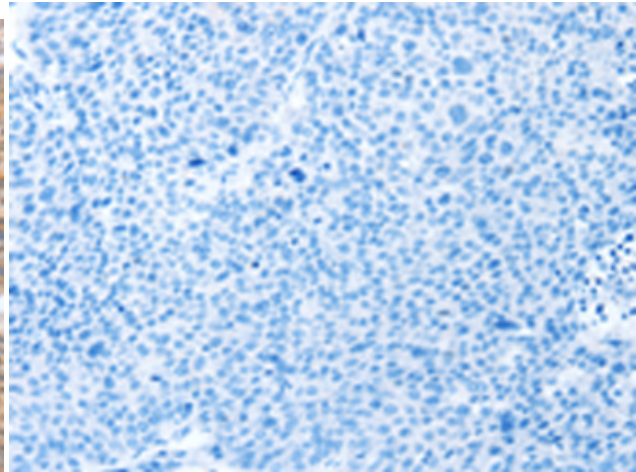
**Constituents:** PBS (without Mg<sup>2+</sup> and Ca<sup>2+</sup>), pH 7.4, 150 mM NaCl, 0.05% Sodium Azide and 40% glycerol

**Research Areas:** Signal Transduction

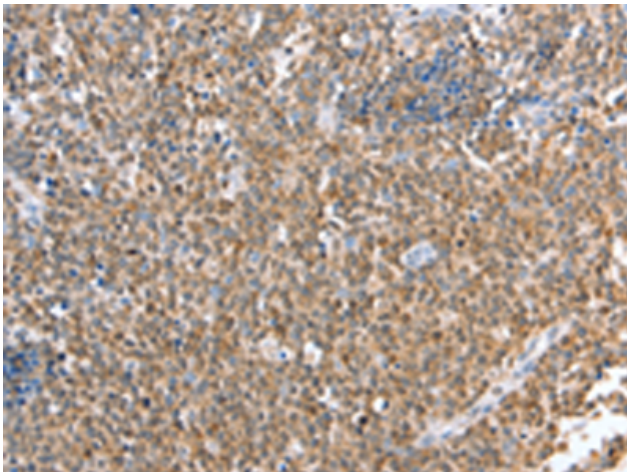
**Storage & Shipping:** Store at -20°C. Avoid repeated freezing and thawing



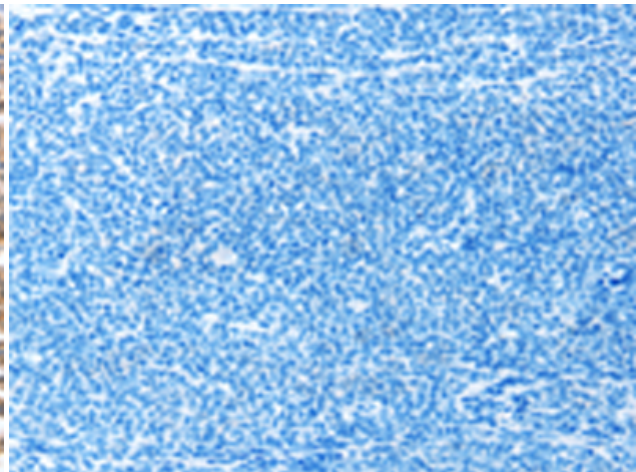
Immunohistochemistry analysis of paraffin embedded Human liver cancer tissue using 216849 (TRAF3IP3 Antibody) at a dilution of 1/20 (Cytoplasm).



In comparison with the IHC on the left, the same paraffin-embedded Human liver cancer tissue is first treated with the fusion protein and then with 216849 (Anti-TRAF3IP3 Antibody) at dilution 1/20.



The image on the left is immunohistochemistry of paraffin-embedded Human lymphoma tissue using 216849 (Anti-TRAF3IP3 Antibody) at a dilution of 1/20.



In comparison with the IHC on the left, the same paraffin-embedded Human lymphoma tissue is first treated with fusion protein and then with D221358 (Anti-TRAF3IP3 Antibody) at dilution 1/20.