

TRANSMEMBRANE PROTEIN 43 RABBIT MAB

Cat.#: N263003

Product Name: Anti-Transmembrane Protein 43 Rabbit Monoclonal Antibody

Synonyms: LUMA; ARVC5; ARVD5; EDMD7

UNIPROT ID: Q9BTV4

Background: May have an important role in maintaining nuclear envelope structure by organizing protein complexes at the inner nuclear membrane. Required for retaining emerin at the inner nuclear membrane .

Immunogen: A synthetic peptide of human TMEM43

Applications: WB,IHC-P

Recommended Dilutions: WB: 1/500-1/1000 IHC: 1/50-1/100

Host Species: Rabbit

Clonality: Rabbit Monoclonal

Clone ID: R07-9D4

MW: Calculated MW: 45 kDa; Observed MW: 45 kDa

Isotype: IgG

Purification: Affinity Purified

Species Reactivity: Human,Rat

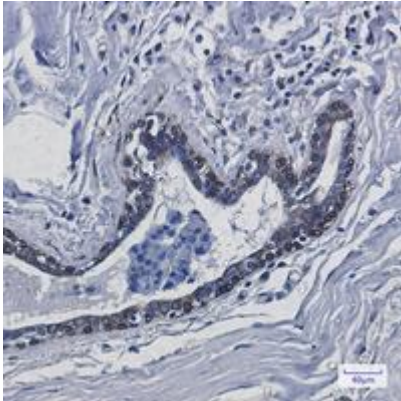
Conjugation: Unconjugated

Modification: Unmodified

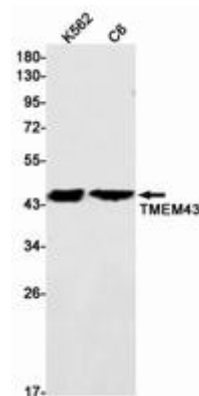
Constituents: PBS (without Mg²⁺ and Ca²⁺), pH 7.3 containing 50% glycerol, 0.5% BSA and 0.02% sodium azide

Research Areas: Tags & Cell Markers

Storage & Shipping: Store at -20°C. Avoid repeated freezing and thawing



Immunohistochemistry analysis of paraffin-embedded Human breast cancer using TMEM43 antibody. High-pressure and temperature Sodium Citrate pH 6.0 was used for antigen retrieval.



Western blot analysis of TMEM43 in K562, C6 lysates using Transmembrane Protein 43 antibody.