

TREX1 RABBIT MAB

Cat.#: N261623

Product Name: Anti-TREX1 Rabbit Monoclonal Antibody

Synonyms: AGS1; AGS5; CRV; DNase III; DRN3; HERNS; TREX1

UNIPROT ID: Q9NSU2

Background: TREX1 is the major 3'→5' DNA exonuclease in human cells. The protein is a non processive exonuclease that may serve a proofreading function for a human DNA polymerase.

Immunogen: Recombinant protein of human TREX1

Applications: WB,IHC-F,IHC-P,ICC/IF

Recommended Dilutions: WB: 1/500-1/1000 IHC: 1/50-1/100 IF: 1/50-1/200

Host Species: Rabbit

Clonality: Rabbit Monoclonal

Clone ID: R05-1D6

MW: Calculated MW: 33 kDa; Observed MW: 33 kDa

Isotype: IgG

Purification: Affinity Purified

Species Reactivity: Human

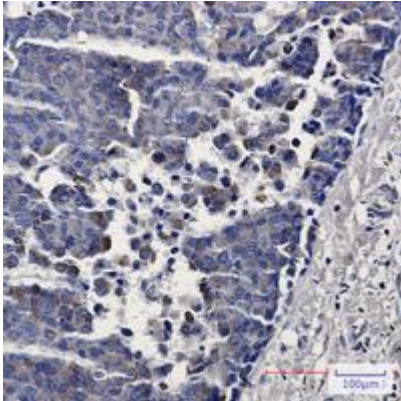
Conjugation: Unconjugated

Modification: Unmodified

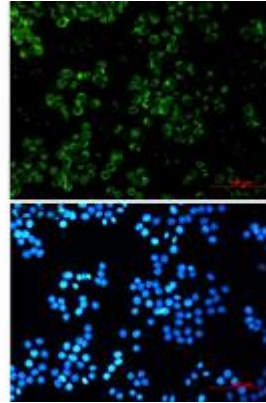
Constituents: PBS (without Mg²⁺ and Ca²⁺), pH 7.3 containing 50% glycerol, 0.5% BSA and 0.02% sodium azide

Research Areas: Epigenetics and Nuclear Signaling

Storage & Shipping: Store at -20°C. Avoid repeated freezing and thawing



Immunohistochemistry analysis of paraffin-embedded Human breast cancer tissue using TREX1 antibody. High-pressure and temperature Sodium Citrate pH 6.0 was used for antigen retrieval.



Immunocytochemistry analysis of TREX1 (green) in Hela using TREX1 antibody, and DAPI (blue).



Western blot analysis of TREX1 in Hela lysates using TREX1 antibody.