

TRIB1 RABBIT PAB

Cat.#: S221053

Product Name: Anti-TRIB1 Rabbit Polyclonal Antibody

Synonyms: C8FW; GIG2; TRB1; GIG-2; SKIP1; TRB-1

UNIPROT ID: Q96RU8 (Gene Accession - NP_079471)

Background: Interacts with MAPK kinases and regulates activation of MAP kinases. May not display kinase activity.

Immunogen: Synthetic peptide of human TRIB1

Applications: ELISA, IHC

Recommended Dilutions: IHC: Oct-50; ELISA: 1000-2000

Host Species: Rabbit

Clonality: Rabbit Polyclonal

Isotype: Immunogen-specific rabbit IgG

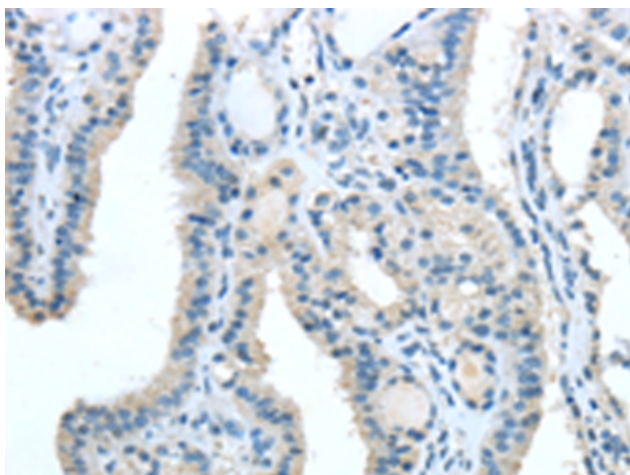
Purification: Antigen affinity purification

Species Reactivity: Human, Mouse

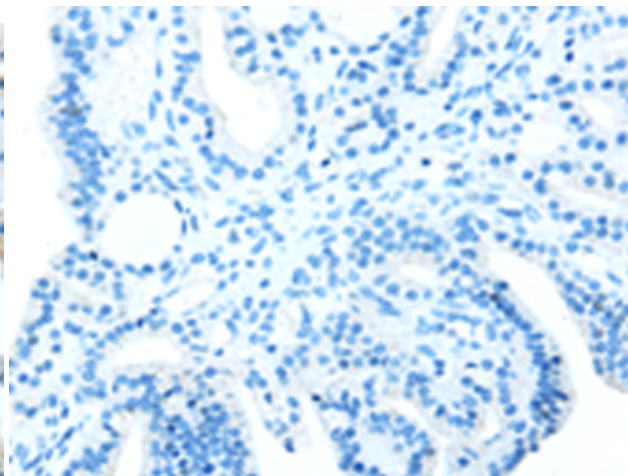
Constituents: PBS (without Mg²⁺ and Ca²⁺), pH 7.4, 150 mM NaCl, 0.05% Sodium Azide and 40% glycerol

Research Areas: Signal Transduction, Cardiovascular, Stem Cells

Storage & Shipping: Store at -20°C. Avoid repeated freezing and thawing



Immunohistochemistry analysis of paraffin embedded Human thyroid cancer tissue using 221053 (TRIB1 Antibody) at a dilution of 1/20 (Cytoplasm).



In comparison with the IHC on the left, the same paraffin-embedded Human thyroid cancer tissue is first treated with the synthetic peptide and then with 221053 (Anti-TRIB1 Antibody) at dilution 1/20.