

TRIB3 RABBIT MAB

Cat.#: N263020

Product Name: Anti-TRIB3 Rabbit Monoclonal Antibody

Synonyms: C20orf97; NIPK; SINK; SKIP3; TRB3; Trib3; Tribbles homolog 3; Tribbles pseudokinase 3; Tribbles3

UNIPROT ID: Q96RU7

Background: Disrupts insulin signaling by binding directly to Akt kinases and blocking their activation. May bind directly to and mask the 'Thr-308' phosphorylation site in AKT1. Binds to ATF4 and inhibits its transcriptional activation activity. Interacts with the NF-kappa-B transactivator p65 RELA and inhibits its phosphorylation and thus its transcriptional activation activity.

Immunogen: A synthetic peptide of human TRIB3

Applications: WB,IP

Recommended Dilutions: WB: 1/500-1/1000 IP: 1/20

Host Species: Rabbit

Clonality: Rabbit Monoclonal

Clone ID: R01-9D1

MW: Calculated MW: 40 kDa; Observed MW: 40 kDa

Isotype: IgG

Purification: Affinity Purified

Species Reactivity: Human

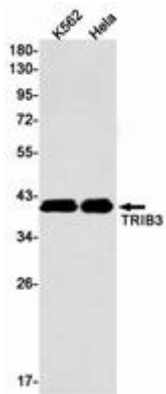
Conjugation: Unconjugated

Modification: Unmodified

Constituents: PBS (without Mg²⁺ and Ca²⁺), pH 7.3 containing 50% glycerol, 0.5% BSA and 0.02% sodium azide

Research Areas: Signal Transduction

Storage & Shipping: Store at -20°C. Avoid repeated freezing and thawing



Western blot analysis of TRIB3 in K562, HeLa lysates using TRIB3 antibody.