

## TRIM33 RABBIT PAB

**Cat.#:** S221016

**Product Name:** Anti-TRIM33 Rabbit Polyclonal Antibody

**Synonyms:** ECTO; PTC7; RFG7; TFIG; TIFIG; TIFGAMMA; TIFIGAMMA

**UNIPROT ID:** Q9UPN9 (Gene Accession - NP\_056990 )

**Background:** The protein encoded by this gene is thought to be a transcriptional corepressor. However, molecules that interact with this protein have not yet been identified. The protein is a member of the tripartite motif family. This motif includes three zinc-binding domains, a RING, a B-box type 1 and a B-box type 2, and a coiled-coil region. Three alternatively spliced transcript variants for this gene have been described, however, the full-length nature of one variant has not been determined.

**Immunogen:** Synthetic peptide of human TRIM33

**Applications:** ELISA, IHC

**Recommended Dilutions:** IHC: 20-100; ELISA: 2000-5000

**Host Species:** Rabbit

**Clonality:** Rabbit Polyclonal

**Isotype:** Immunogen-specific rabbit IgG

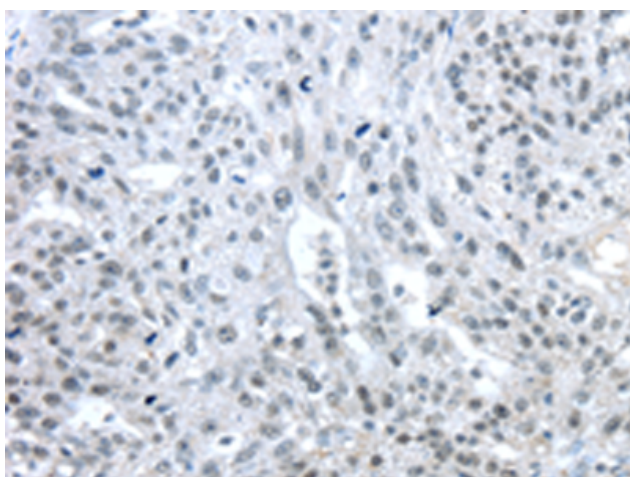
**Purification:** Antigen affinity purification

**Species Reactivity:** Human, Mouse

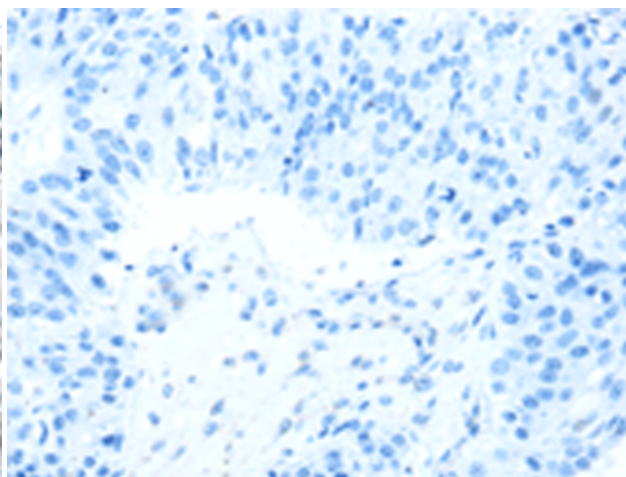
**Constituents:** PBS (without Mg<sup>2+</sup> and Ca<sup>2+</sup>), pH 7.4, 150 mM NaCl, 0.05% Sodium Azide and 40% glycerol

**Research Areas:** Epigenetics and Nuclear Signaling, Signal Transduction, Stem Cells

**Storage & Shipping:** Store at -20°C. Avoid repeated freezing and thawing



Immunohistochemistry analysis of paraffin embedded Human breast cancer tissue using 221016 (TRIM33 Antibody) at a dilution of 1/25 (Nucleus).



In comparison with the IHC on the left, the same paraffin-embedded Human breast cancer tissue is first treated with the synthetic peptide and then with 221016 (Anti-TRIM33 Antibody) at dilution 1/25.