

## TRIM35 RABBIT PAB

**Cat.#:** S221022

**Product Name:** Anti-TRIM35 Rabbit Polyclonal Antibody

**Synonyms:** HLS5; MAIR

**UNIPROT ID:** Q9UPQ4 (Gene Accession - NP\_741983 )

**Background:** The protein encoded by this gene is a member of the tripartite motif (TRIM) family. The TRIM motif includes three zinc-binding domains, a RING, a B-box type 1 and a B-box type 2, and a coiled-coil region. The function of this protein has not been identified.

**Immunogen:** Synthetic peptide of human TRIM35

**Applications:** ELISA, WB, IHC

**Recommended Dilutions:** IHC: 25-100;WB: 200-1000;ELISA: 1000-2000

**Host Species:** Rabbit

**Clonality:** Rabbit Polyclonal

**Isotype:** Immunogen-specific rabbit IgG

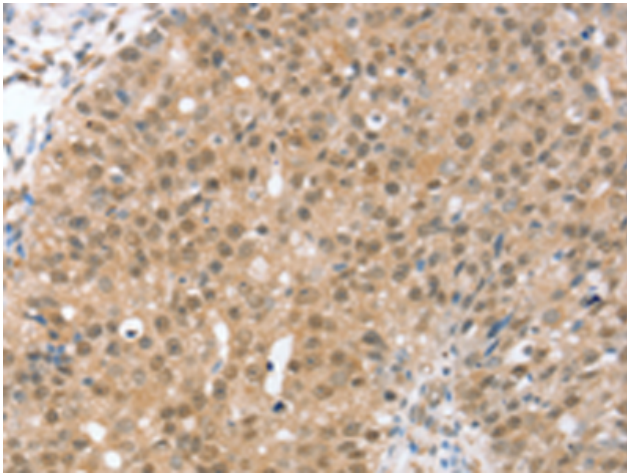
**Purification:** Antigen affinity purification

**Species Reactivity:** Human

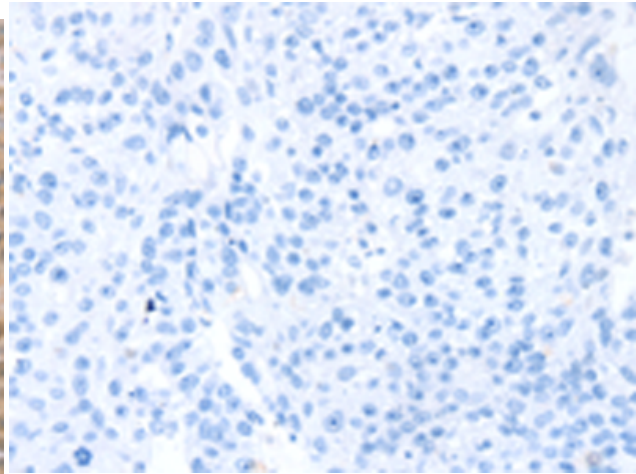
**Constituents:** PBS (without Mg<sup>2+</sup> and Ca<sup>2+</sup>), pH 7.4, 150 mM NaCl, 0.05% Sodium Azide and 40% glycerol

**Research Areas:** Epigenetics and Nuclear Signaling, Cell Biology

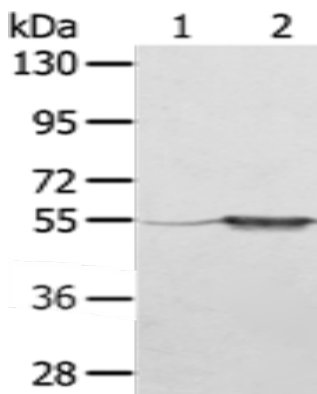
**Storage & Shipping:** Store at -20°C. Avoid repeated freezing and thawing



Immunohistochemistry analysis of paraffin embedded Human breast cancer tissue using 221022(TRIM35 Antibody) at a dilution of 1/35(Nucleus and Cytoplasm ).



In comparison with the IHC on the left, the same paraffin-embedded Human breast cancer tissue is first treated with the synthetic peptide and then with 221022(Anti-TRIM35 Antibody) at dilution 1/35.



Gel: 8%SDS-PAGE, Lysate: 40  $\mu$ g;  
Lane 1-2: A375 cells, human fetal muscle tissue;  
Primary antibody: 221022(TRIM35 Antibody) at dilution 1/550;  
Secondary antibody: Goat anti rabbit IgG at 1/8000 dilution;  
Exposure time: 5 seconds