

TRIM40 RABBIT PAB

Cat.#: S220862

Product Name: Anti-TRIM40 Rabbit Polyclonal Antibody

Synonyms: RNF35

UNIPROT ID: Q6P9F5 (Gene Accession - NP_619645)

Background: This gene encodes a member of the tripartite motif (TRIM) protein family. The encoded protein may play a role as a negative regulator against inflammation and carcinogenesis in the gastrointestinal tract. Alternatively spliced transcript variants that encode different protein isoforms have been described.

Immunogen: Synthetic peptide of human TRIM40

Applications: ELISA, WB, IHC

Recommended Dilutions: IHC: 25-100;WB: 200-1000;ELISA: 1000-2000

Host Species: Rabbit

Clonality: Rabbit Polyclonal

Isotype: Immunogen-specific rabbit IgG

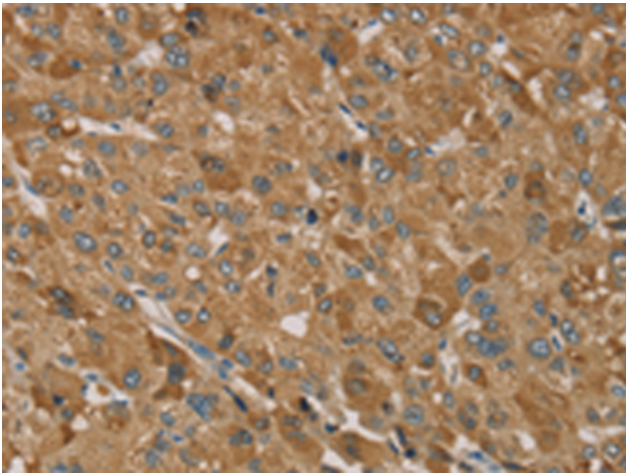
Purification: Antigen affinity purification

Species Reactivity: Human

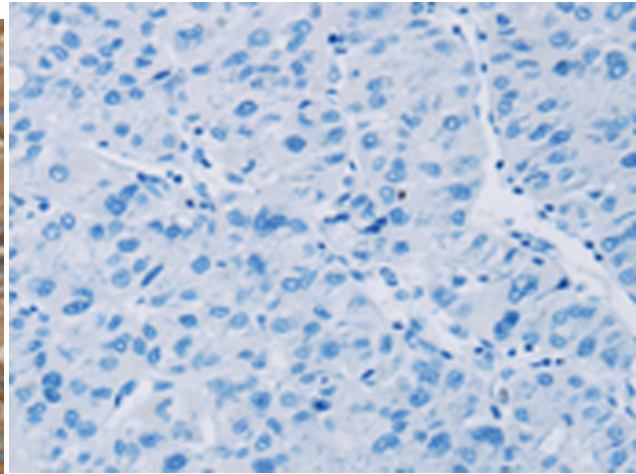
Constituents: PBS (without Mg²⁺ and Ca²⁺), pH 7.4, 150 mM NaCl, 0.05% Sodium Azide and 40% glycerol

Research Areas: Cell Biology

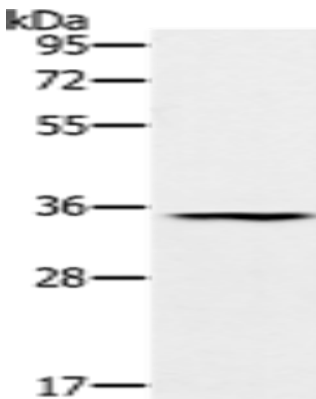
Storage & Shipping: Store at -20°C. Avoid repeated freezing and thawing



Immunohistochemistry analysis of paraffin embedded Human liver cancer tissue using 220862 (TRIM40 Antibody) at a dilution of 1/35 (Cytoplasm).



In comparison with the IHC on the left, the same paraffin-embedded Human liver cancer tissue is first treated with the synthetic peptide and then with 220862 (Anti-TRIM40 Antibody) at dilution 1/35.



Gel: 8% SDS-PAGE, Lysate: 40 μ g;
Lane: Human normal stomach tissue;
Primary antibody: 220862 (TRIM40 Antibody) at dilution 1/200;
Secondary antibody: Goat anti rabbit IgG at 1/8000 dilution;
Exposure time: 40 seconds