

TRIM68 RABBIT PAB

Cat.#: N225102

Product Name: Anti-TRIM68 Rabbit pAb

Synonyms: TRIM68; GC109; RNF137; SS56; E3 ubiquitin-protein ligase TRIM68; RING finger protein 137; SSA protein SS-56; SS-56; Tripartite motif-containing protein 68

UNIPROT ID: Q6AZZ1

Background: Functions as a ubiquitin E3 ligase.

Immunogen: Synthesized peptide derived from the Internal region of human SS-56.

Applications: WB,IHC-P,ELISA

Recommended Dilutions: WB: 1/500-1/1000 IHC: 1/50-1/100 ELISA: 1/10000

Host Species: Rabbit

Clonality: Rabbit Polyclonal

Clone ID: -

MW: Calculated MW: 56 kDa; Observed MW: 56 kDa

Isotype: IgG

Purification: Affinity Purified

Species Reactivity: Human

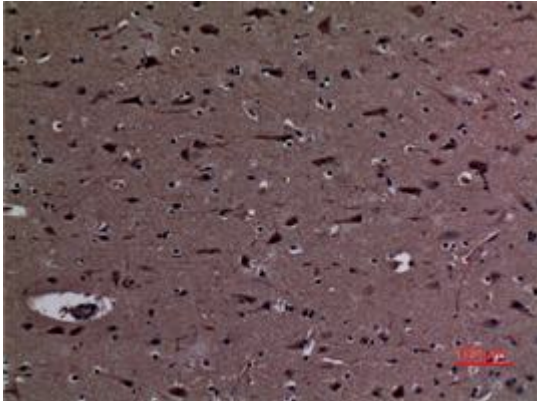
Conjugation: Unconjugated

Modification: Unmodified

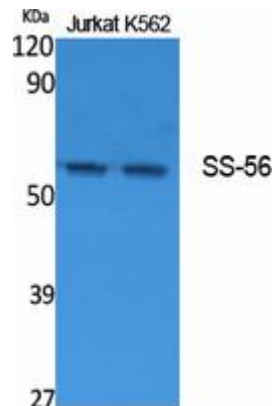
Constituents: PBS (without Mg²⁺ and Ca²⁺), pH 7.3 containing 50% glycerol, 0.5% BSA and 0.02% sodium azide

Research Areas: Immunology

Storage & Shipping: Store at -20°C. Avoid repeated freezing and thawing



Immunohistochemistry analysis of paraffin-embedded Human brain using TRIM68 antibody. High-pressure and temperature Sodium Citrate pH 6.0 was used for antigen retrieval.



Western blot analysis of TRIM68 in Jurkat, K562 lysates using SS56 antibody.