

## TRPA1 RABBIT PAB

**Cat.#:** S220240

**Product Name:** Anti-TRPA1 Rabbit Polyclonal Antibody

**Synonyms:** FEPS; ANKTM1

**UNIPROT ID:** O75762 (Gene Accession - NP\_015628 )

**Background:** The structure of the protein encoded by this gene is highly related to both the protein ankyrin and transmembrane proteins. The specific function of this protein has not yet been determined; however, studies indicate the function may involve a role in signal transduction and growth control.

**Immunogen:** Synthetic peptide of human TRPA1

**Applications:** ELISA, IHC

**Recommended Dilutions:** IHC: 25-100; ELISA: 2000-5000

**Host Species:** Rabbit

**Clonality:** Rabbit Polyclonal

**Isotype:** Immunogen-specific rabbit IgG

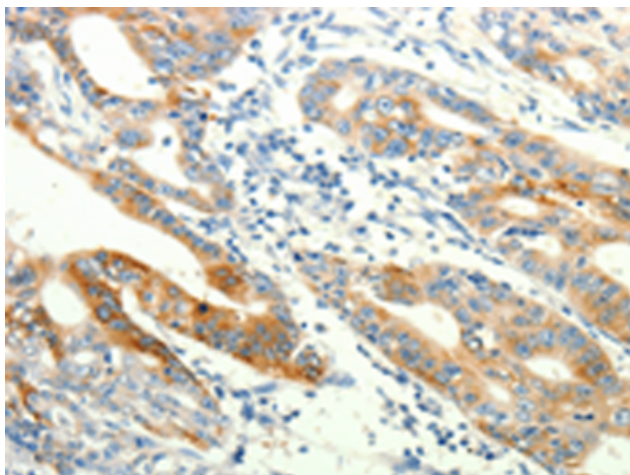
**Purification:** Antigen affinity purification

**Species Reactivity:** Human

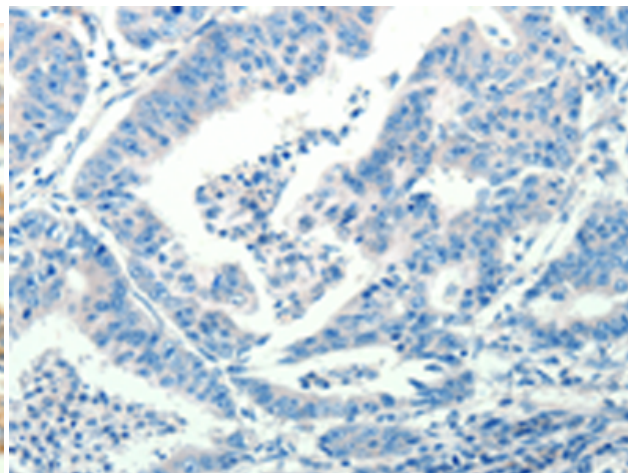
**Constituents:** PBS (without Mg<sup>2+</sup> and Ca<sup>2+</sup>), pH 7.4, 150 mM NaCl, 0.05% Sodium Azide and 40% glycerol

**Research Areas:** Neuroscience

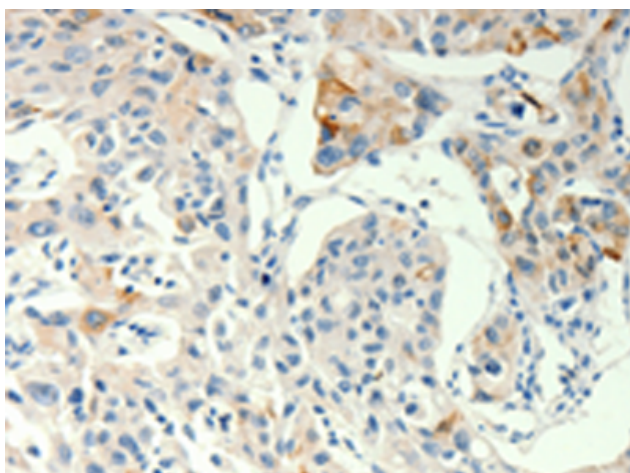
**Storage & Shipping:** Store at -20°C. Avoid repeated freezing and thawing



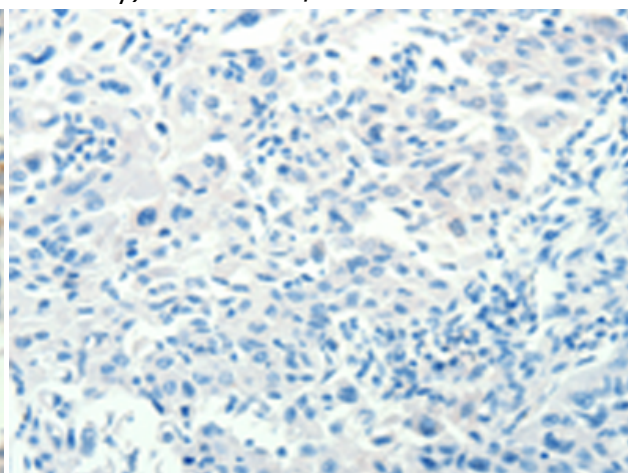
Immunohistochemistry analysis of paraffin embedded Human gastric cancer tissue using 220240 (TRPA1 Antibody) at a dilution of 1/60 (Cytoplasm).



In comparison with the IHC on the left, the same paraffin-embedded Human gastric cancer tissue is first treated with the synthetic peptide and then with 220240 (Anti-TRPA1 Antibody) at dilution 1/60.



The image on the left is immunohistochemistry of paraffin-embedded Human lung cancer tissue using 220240 (Anti-TRPA1 Antibody) at a dilution of 1/60.



In comparison with the IHC on the left, the same paraffin-embedded Human lung cancer tissue is first treated with synthetic peptide and then with D261184 (Anti-TRPA1 Antibody) at dilution 1/60.