

## TRPC7 RABBIT PAB

**Cat.#:** S210657

**Product Name:** Anti-TRPC7 Rabbit Polyclonal Antibody

**Synonyms:** TRP7

**UNIPROT ID:** Q9HCX4 (Gene Accession - BC128185 )

**Background:** This protein may form a receptor-activated non-selective calcium permeant cation channel. Probably is operated by a phosphatidylinositol second messenger system activated by receptor tyrosine kinases or G-protein coupled receptors. Activated by diacylglycerol (DAG) . May also be activated by intracellular calcium store depletion. It can interact with MX1 and RNF24. Interacts (via ANK-repeat domains) with PRKG1.

**Immunogen:** Fusion protein of human TRPC7

**Applications:** ELISA, IHC

**Recommended Dilutions:** IHC: 25-100; ELISA: 2000-5000

**Host Species:** Rabbit

**Clonality:** Rabbit Polyclonal

**Isotype:** Immunogen-specific rabbit IgG

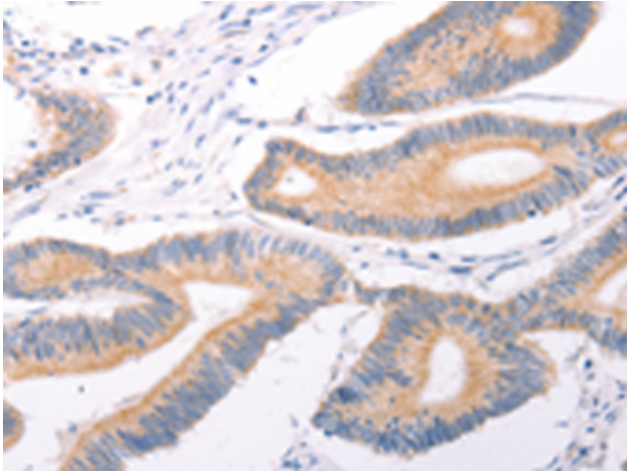
**Purification:** Antigen affinity purification

**Species Reactivity:** Human, Mouse

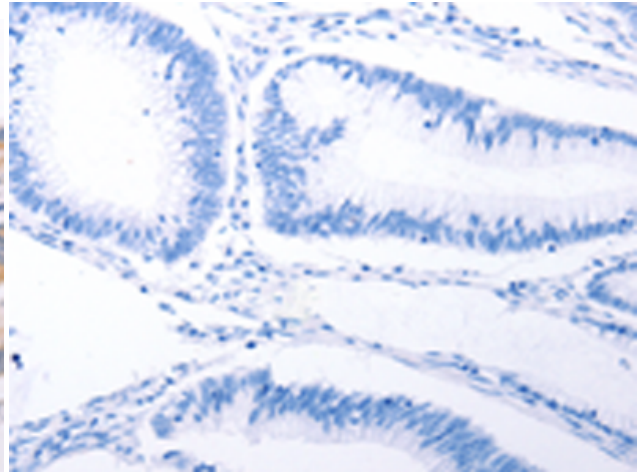
**Constituents:** PBS (without Mg<sup>2+</sup> and Ca<sup>2+</sup>), pH 7.4, 150 mM NaCl, 0.05% Sodium Azide and 40% glycerol

**Research Areas:** Signal Transduction

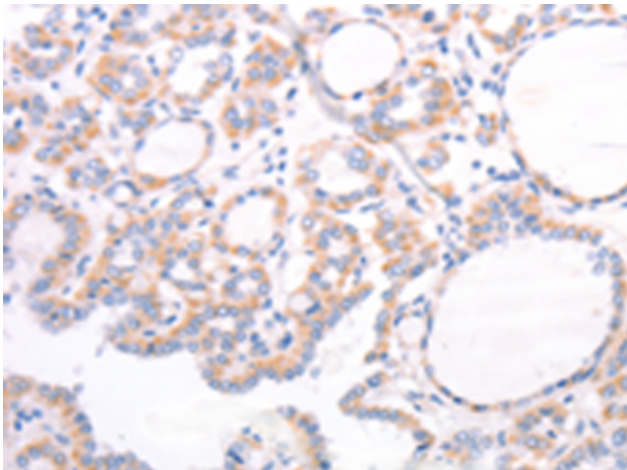
**Storage & Shipping:** Store at -20°C. Avoid repeated freezing and thawing



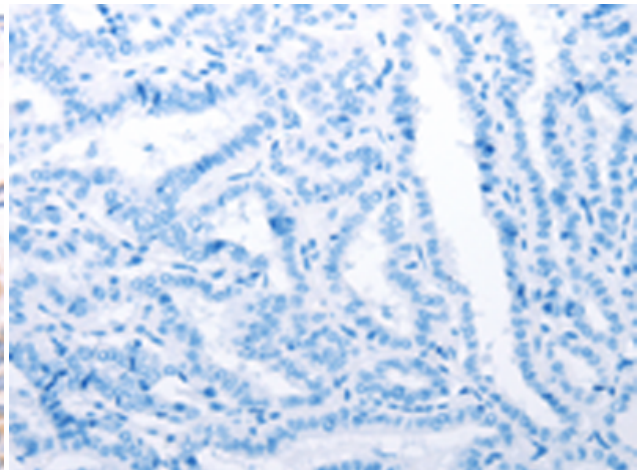
Immunohistochemistry analysis of paraffin embedded Human colon cancer tissue using 210657 (TRPC7 Antibody) at a dilution of 1/25 (Cytoplasm).



In comparison with the IHC on the left, the same paraffin-embedded Human colon cancer tissue is first treated with the fusion protein and then with 210657 (Anti-TRPC7 Antibody) at dilution 1/25.



The image on the left is immunohistochemistry of paraffin-embedded Human thyroid cancer tissue using 210657 (Anti-TRPC7 Antibody) at a dilution of 1/25.



In comparison with the IHC on the left, the same paraffin-embedded Human thyroid cancer tissue is first treated with fusion protein and then with D121375 (Anti-TRPC7 Antibody) at dilution 1/25.