

TRPM8 RABBIT PAB

Cat.#: S217602

Product Name: Anti-TRPM8 Rabbit Polyclonal Antibody

Synonyms: TRPP8; LTRPC6

UNIPROT ID: Q7Z2W7 (Gene Accession - BC001135)

Background: Transient receptor potential ion channels (TRPC) are a superfamily of six transmembrane segment-spanning gated cation channels. TRP subtypes mediate store-operated Ca²⁺ entry, a process involving Ca²⁺ influx and replenishment of Ca²⁺ stores formerly emptied through the action of inositol 1,4,5-trisphosphate production and other Ca²⁺ mobilizing agents.

Immunogen: Fusion protein of human TRPM8

Applications: ELISA, IHC

Recommended Dilutions: IHC: 25-100; ELISA: 1000-2000

Host Species: Rabbit

Clonality: Rabbit Polyclonal

Isotype: Immunogen-specific rabbit IgG

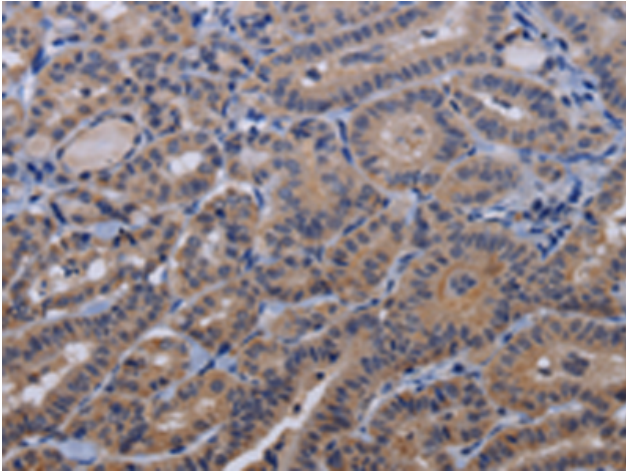
Purification: Antigen affinity purification

Species Reactivity: Human, Mouse, Rat

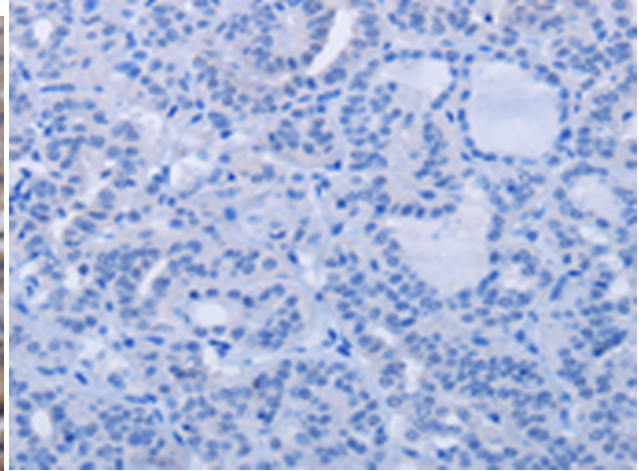
Constituents: PBS (without Mg²⁺ and Ca²⁺), pH 7.4, 150 mM NaCl, 0.05% Sodium Azide and 40% glycerol

Research Areas: Metabolism, Neuroscience

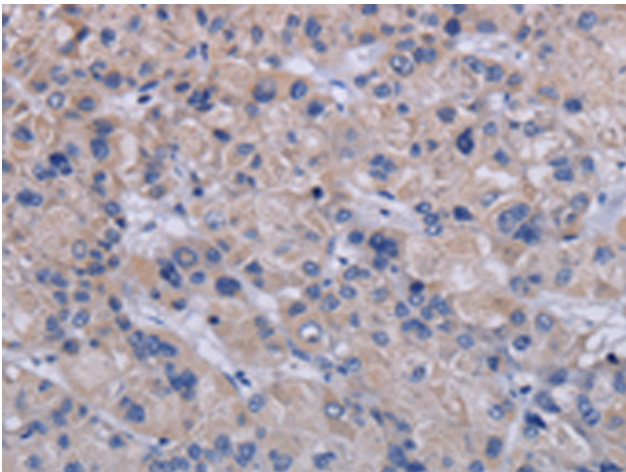
Storage & Shipping: Store at -20°C. Avoid repeated freezing and thawing



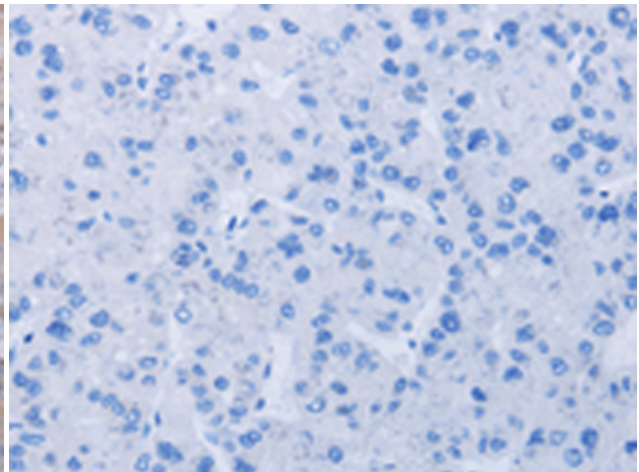
Immunohistochemistry analysis of paraffin embedded Human thyroid cancer tissue using 217602 (TRPM8 Antibody) at a dilution of 1/30 (Cytoplasm).



In comparison with the IHC on the left, the same paraffin-embedded Human thyroid cancer tissue is first treated with the fusion protein and then with 217602 (Anti-TRPM8 Antibody) at dilution 1/30.



The image on the left is immunohistochemistry of paraffin-embedded Human liver cancer tissue using 217602 (Anti-TRPM8 Antibody) at a dilution of 1/30.



In comparison with the IHC on the left, the same paraffin-embedded Human liver cancer tissue is first treated with fusion protein and then with D222681 (Anti-TRPM8 Antibody) at dilution 1/30.