

TSEN15 RABBIT PAB

Cat.#: S218405

Product Name: Anti-TSEN15 Rabbit Polyclonal Antibody

Synonyms: sen15; Clorf19

UNIPROT ID: Q8WW01 (Gene Accession - BC022030)

Background: This gene encodes a subunit of the tRNA splicing endonuclease, which catalyzes the removal of introns from tRNA precursors. Alternative splicing results in multiple transcript variants. There is a pseudogene of this gene on chromosome 17.

Immunogen: Full length fusion protein

Applications: ELISA, WB, IHC

Recommended Dilutions: IHC: 50-300;WB: 200-1000;ELISA: 5000-10000

Host Species: Rabbit

Clonality: Rabbit Polyclonal

Isotype: Immunogen-specific rabbit IgG

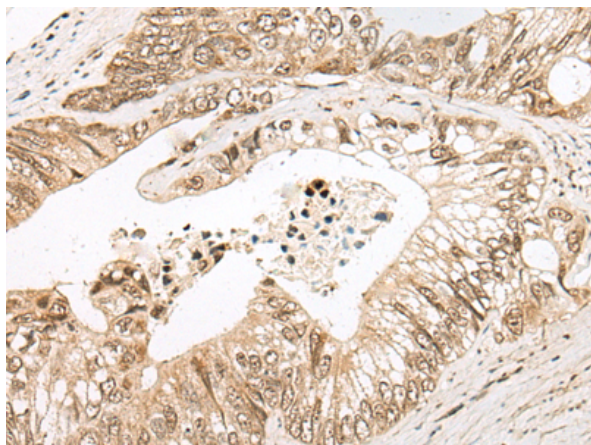
Purification: Antigen affinity purification

Species Reactivity: Human, Mouse

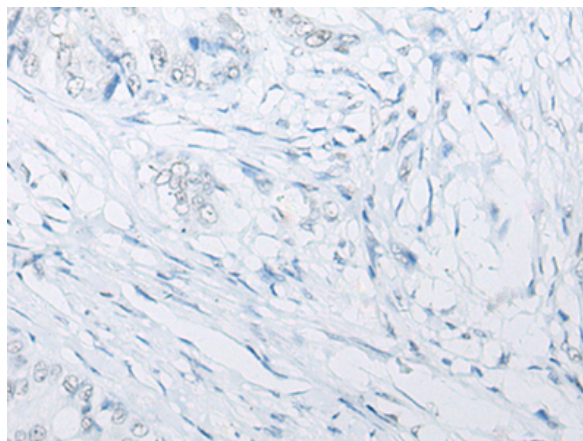
Constituents: PBS (without Mg²⁺ and Ca²⁺), pH 7.4, 150 mM NaCl, 0.05% Sodium Azide and 40% glycerol

Research Areas: Epigenetics and Nuclear Signaling

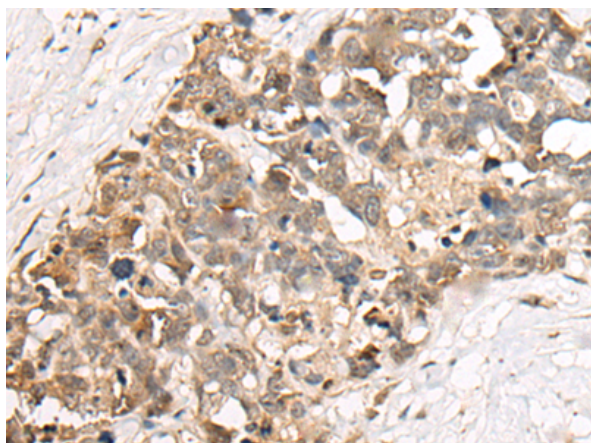
Storage & Shipping: Store at -20°C. Avoid repeated freezing and thawing



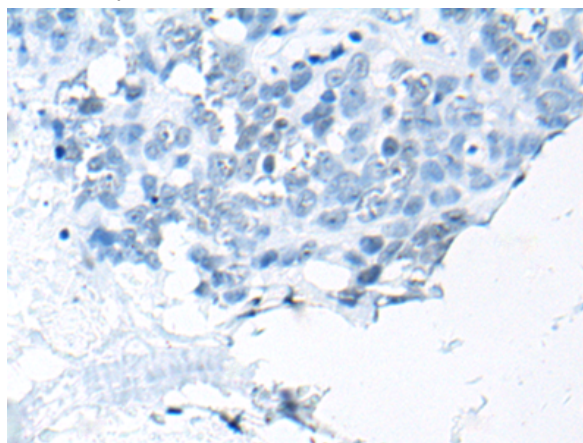
Immunohistochemistry analysis of paraffin embedded Human colorectal cancer tissue using 218405(TSEN15 Antibody) at a dilution of 1/85(Nucleus and Cytoplasm).



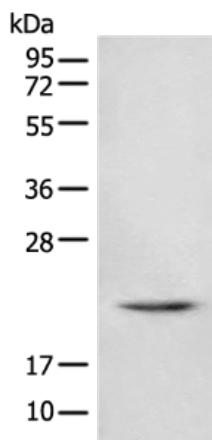
In comparison with the IHC on the left, the same paraffin-embedded Human colorectal cancer tissue is first treated with the fusion protein and then with 218405(Anti-TSEN15 Antibody) at dilution 1/85.



The image on the left is immunohistochemistry of paraffin-embedded Human thyroid cancer tissue using 218405(Anti-TSEN15 Antibody) at a dilution of 1/85.



In comparison with the IHC on the left, the same paraffin-embedded Human thyroid cancer tissue is first treated with fusion protein and then with D224338(Anti-TSEN15 Antibody) at dilution 1/85.



Gel: 12%SDS-PAGE, Lysate: 40 µg;
Lane: Mouse spleen tissue lysate;
Primary antibody: 218405(TSEN15 Antibody) at dilution 1/800;
Secondary antibody: Goat anti rabbit IgG at 1/8000 dilution;
Exposure time: 30 seconds



Product Description

Pioneering GTPase and Oncogene Product Development since 2010
