

## TSEN54 RABBIT PAB

**Cat.#:** S222454

**Product Name:** Anti-TSEN54 Rabbit Polyclonal Antibody

**Synonyms:** PCH4; PCH5; PCH2A; sen54; SEN54L

**UNIPROT ID:** Q7Z6J9 (Gene Accession - NP\_997229 )

**Background:** This gene encodes a subunit of the tRNA splicing endonuclease complex which catalyzes the removal of introns from precursor tRNAs. The complex is also implicated in pre-mRNA 3-prime end processing. Mutations in this gene result in pontocerebellar hypoplasia type 2.

**Immunogen:** Synthetic peptide of human TSEN54

**Applications:** ELISA, IHC

**Recommended Dilutions:** IHC: 50-200; ELISA: 5000-10000

**Host Species:** Rabbit

**Clonality:** Rabbit Polyclonal

**Isotype:** Immunogen-specific rabbit IgG

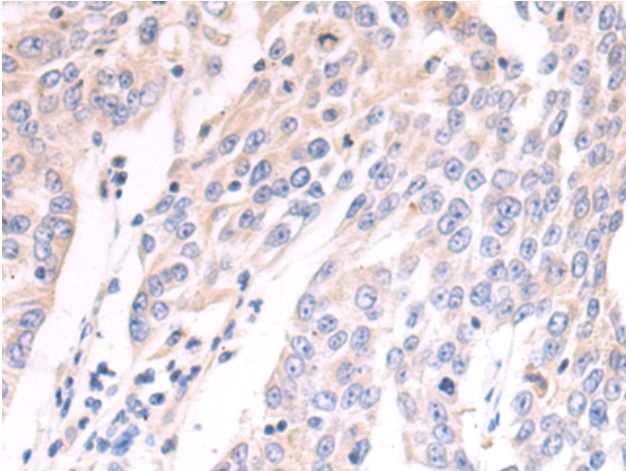
**Purification:** Antigen affinity purification

**Species Reactivity:** Human, Mouse

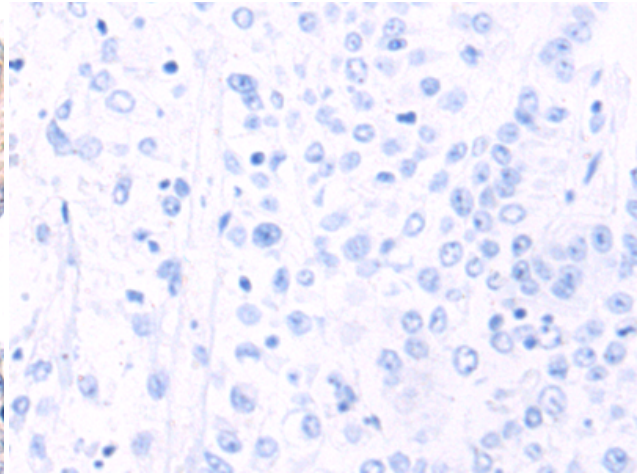
**Constituents:** PBS (without Mg<sup>2+</sup> and Ca<sup>2+</sup>), pH 7.4, 150 mM NaCl, 0.05% Sodium Azide and 40% glycerol

**Research Areas:** Epigenetics and Nuclear Signaling

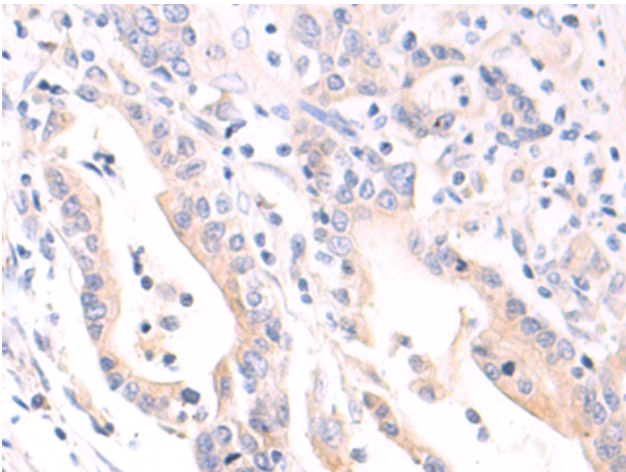
**Storage & Shipping:** Store at -20°C. Avoid repeated freezing and thawing



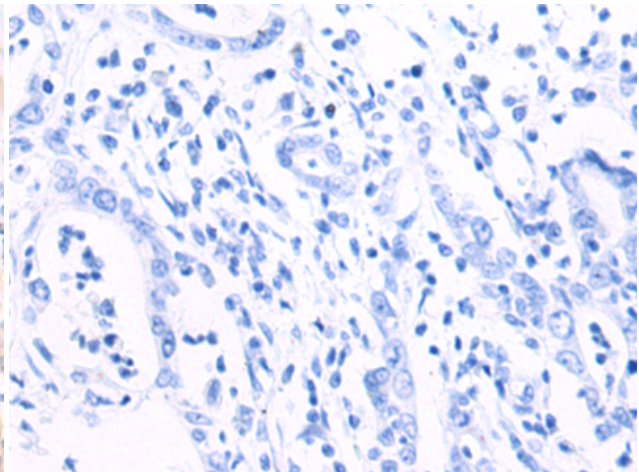
Immunohistochemistry analysis of paraffin embedded Human liver cancer tissue using 222454 (TSEN54 Antibody) at a dilution of 1/50 (Cytoplasm).



In comparison with the IHC on the left, the same paraffin-embedded Human liver cancer tissue is first treated with the synthetic peptide and then with 222454 (Anti-TSEN54 Antibody) at dilution 1/50.



The image on the left is immunohistochemistry of paraffin-embedded Human gastric cancer tissue using 222454 (Anti-TSEN54 Antibody) at a dilution of 1/50.



In comparison with the IHC on the left, the same paraffin-embedded Human gastric cancer tissue is first treated with synthetic peptide and then with D264633 (Anti-TSEN54 Antibody) at dilution 1/50.